



UAB MEDICINE

Renovation: New findings on dry lab space plans for genomics and precision medicine

Kevin Bell

Executive Director, Project Management

University of Alabama at Birmingham

Marnix E. Heersink School of Medicine

Meet Your Speaker

Kevin Bell

Executive Director, Project Management
University of Alabama at Birmingham

Background

- Building has been a part of my life forever
- Auburn University Bachelor's
- Joined UAB in 2007
- UAB Master's of Engineering
- Trained by scientists and engineers

Superpower: Maps & Space





UAB and Heersink Snapshot

26,000+

UAB TOTAL
EMPLOYEES

13,000+

UNIVERSITY EMPLOYEES

12,000+

HOSPITAL EMPLOYEES

21,000+

STUDENT ENROLLMENT

6,900+

FACULTY AND STAFF

27

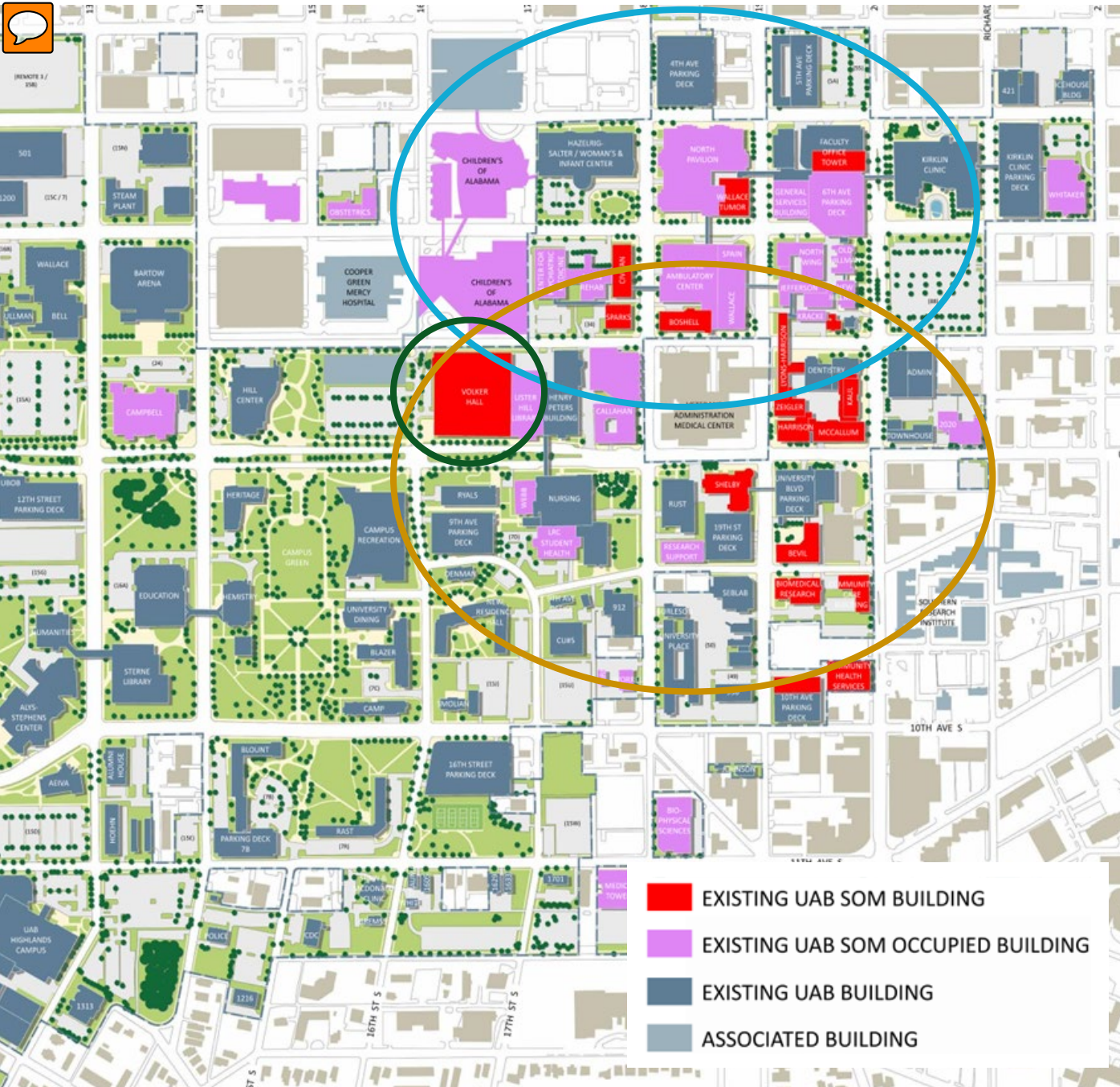
DEPARTMENTS

360+

NIH-FUNDED
INVESTIGATORS

1,800+

MEDICAL
STUDENTS,
RESIDENTS &
FELLOWS



The Heersink School of Medicine Footprint at UAB

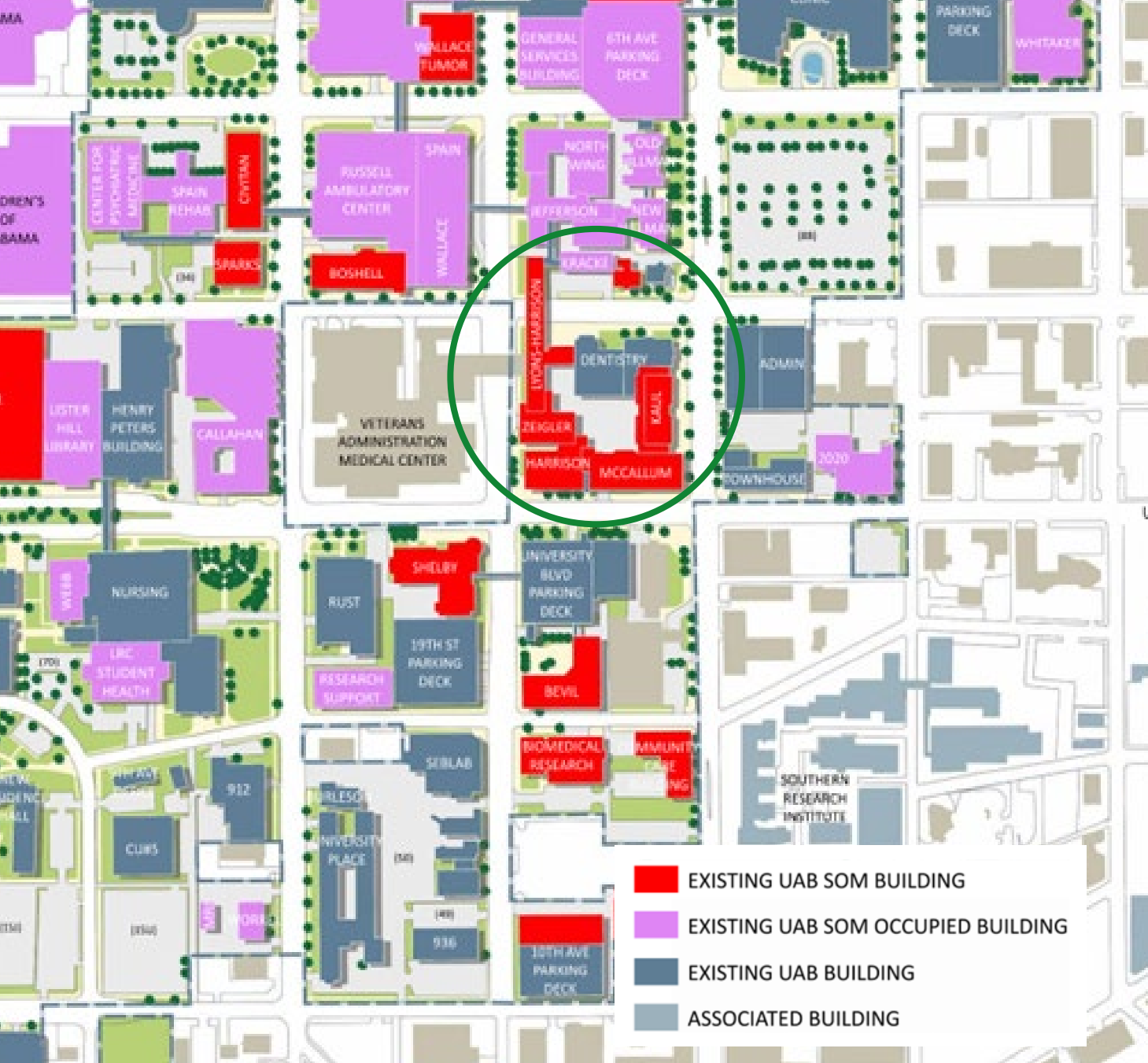
Health System Patient Care
Clinical Trials

Bench Research
Dry Lab
Clinical Trials Support

Medical Education
Bench Research
Dry Lab

Lyons Harrison Research Building

- 2016 SWOT Analysis
 - Heart of the school
 - Connectivity
 - Never get that space back
 - Access to clinical district participants





East View



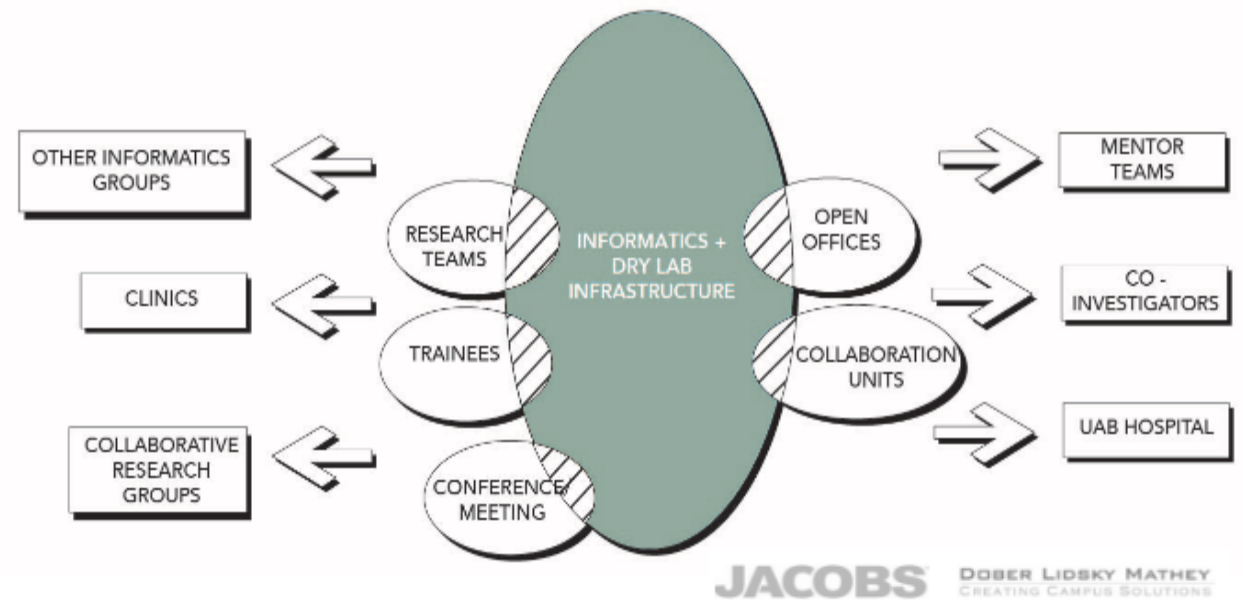
West View





Heersink School of Medicine Space Master Plan

- **2017 Space Master Plan**
 - Focus group – Informatic Dry Lab
- **2019 Lyons Harrison Feasibility Study**
 - Focus group – Informatic and Administrative
- **2021 Altec Styslinger Genomic Medicine and Data Sciences (ALGEN) Design**
 - Focus group - occupants





Heersink 2017 Space Master Plan

Before Construction 2022

- 95% Occupied = 40+ **enabling projects**
 - **Double the capacity** of an existing building
 - **Modernize** defunct labs
 - **Optimize** space assignments
- **Demolish** two old buildings

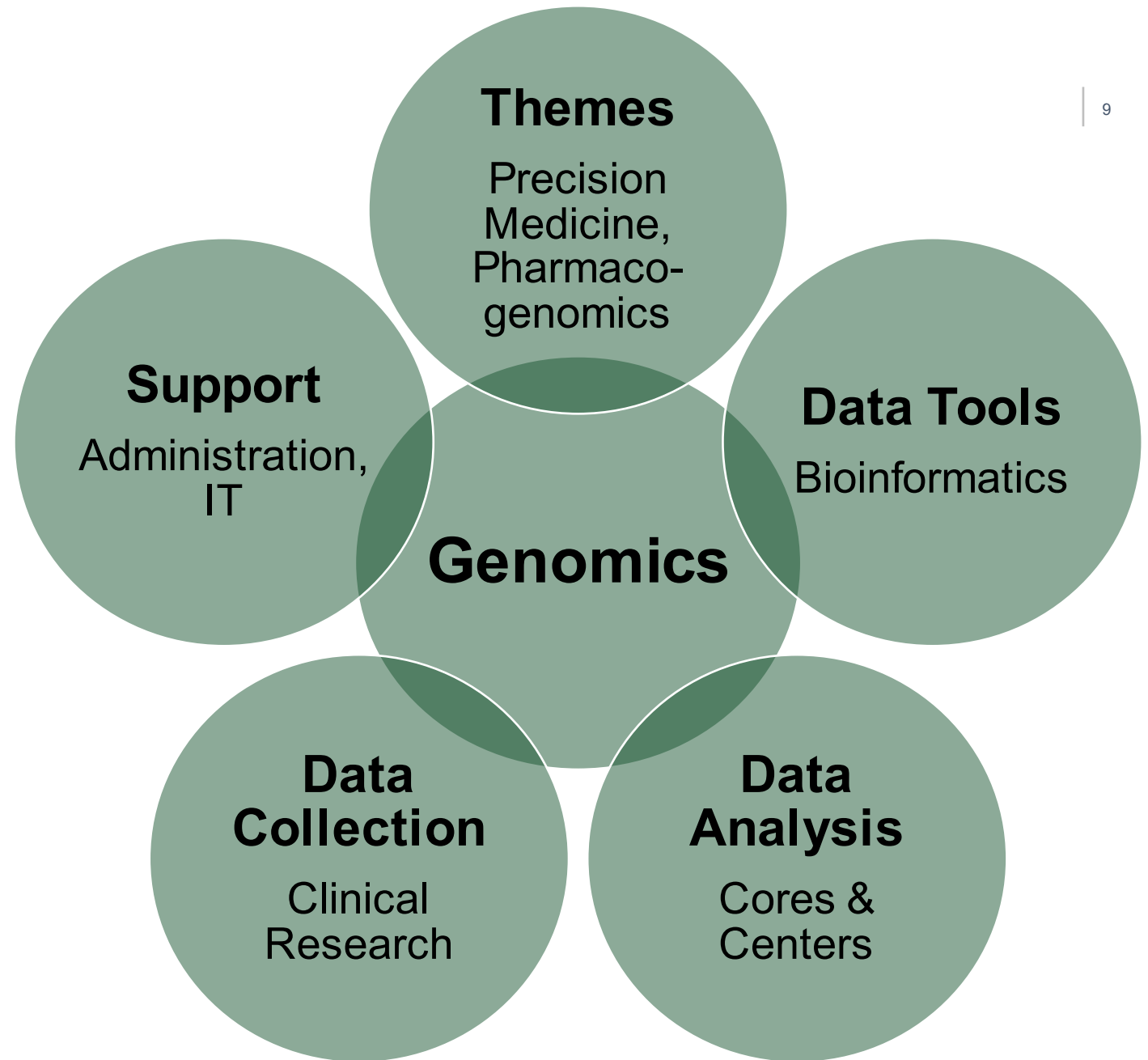
After Construction 2025

- Departments will have **space for recruiting**
 - Only 75% occupied by August
- **Bring together** key leadership
- **Backfill space** will allow for growth and strategic relocations
- **Vacate** two more buildings



Why Genomic and Precision Medicine?

- **Research Growth**
 - HSOM Strategic Plan
 - Expanding opportunities
- **Translational**
 - Taking science from the benchtop to the public





Vision Don'ts

- Long corridor
- Cube Farm
- Computing Power





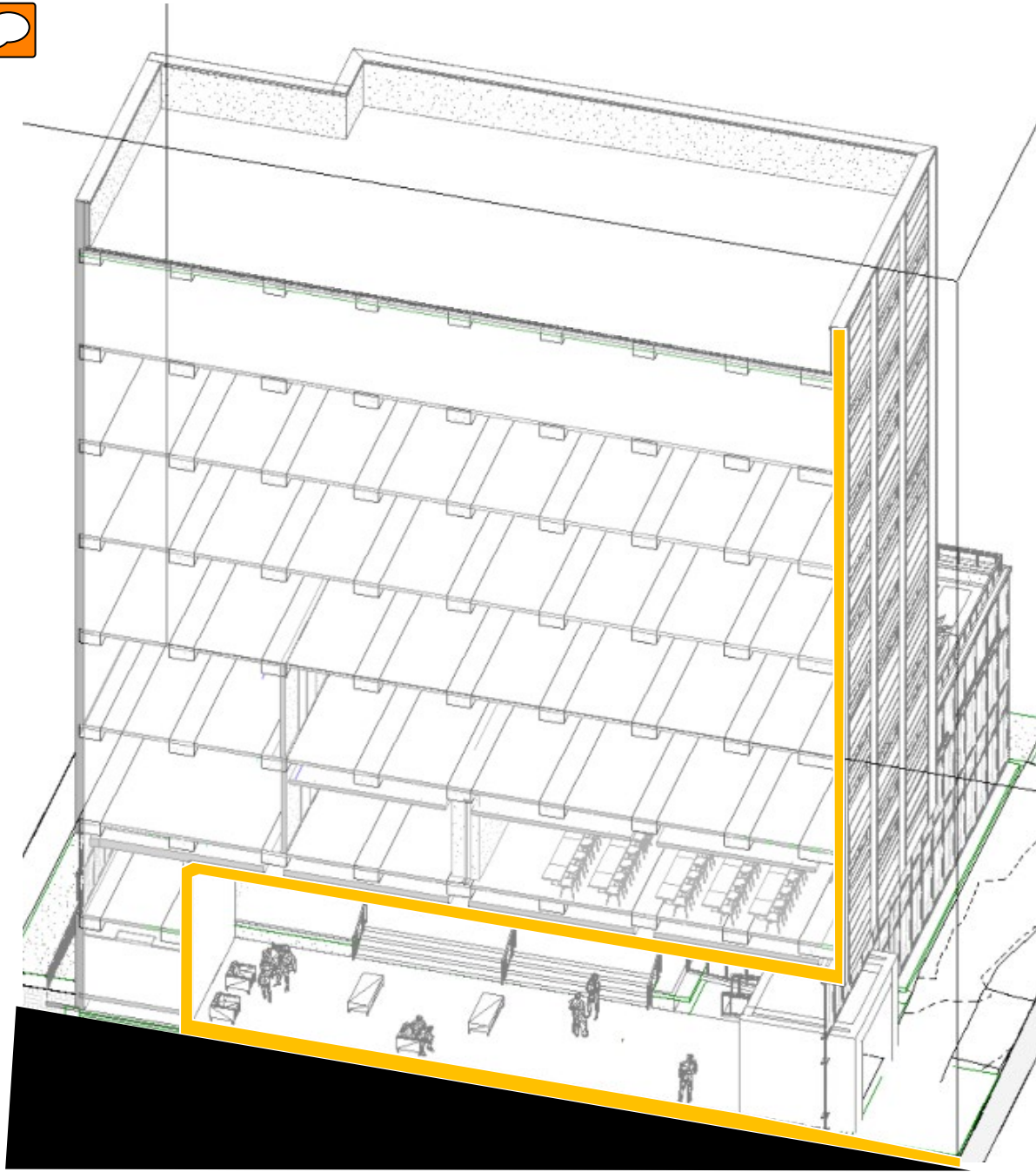
Vision Do's

- **“Iconic”** – Leadership charged us with designing something unique
- **Layout** – activity-based, sharing resources, adaptable for growth
- **Forward Thinking** – inspiring, setting the tone, looking at the future
- **Recruitable** – a space to use for recruitment purposes
- **Sustainability** – LEED, light for all, reused or recycled building, bike station, showers, and wellness/lactation rooms
- **Conference Center** – 200+ seat multifunction, plaza, breakout rooms











MARNIX E. HEERSINK
INSTITUTE FOR BIOMEDICAL INNOVATION CONFERENCE CENTER



GOODYEAR
← CUSTOMER PARKING

ONE WAY →

ONE WAY →



ONE WAY →

Richard Arrington Jr Blvd S



RIGHT LANE MUST TURN RIGHT AHEAD
ROAD CLOSED AHEAD

RIGHT LANE MUST TURN RIGHT





Construction Challenges

Budget Management

“Just take it down to the structure.”





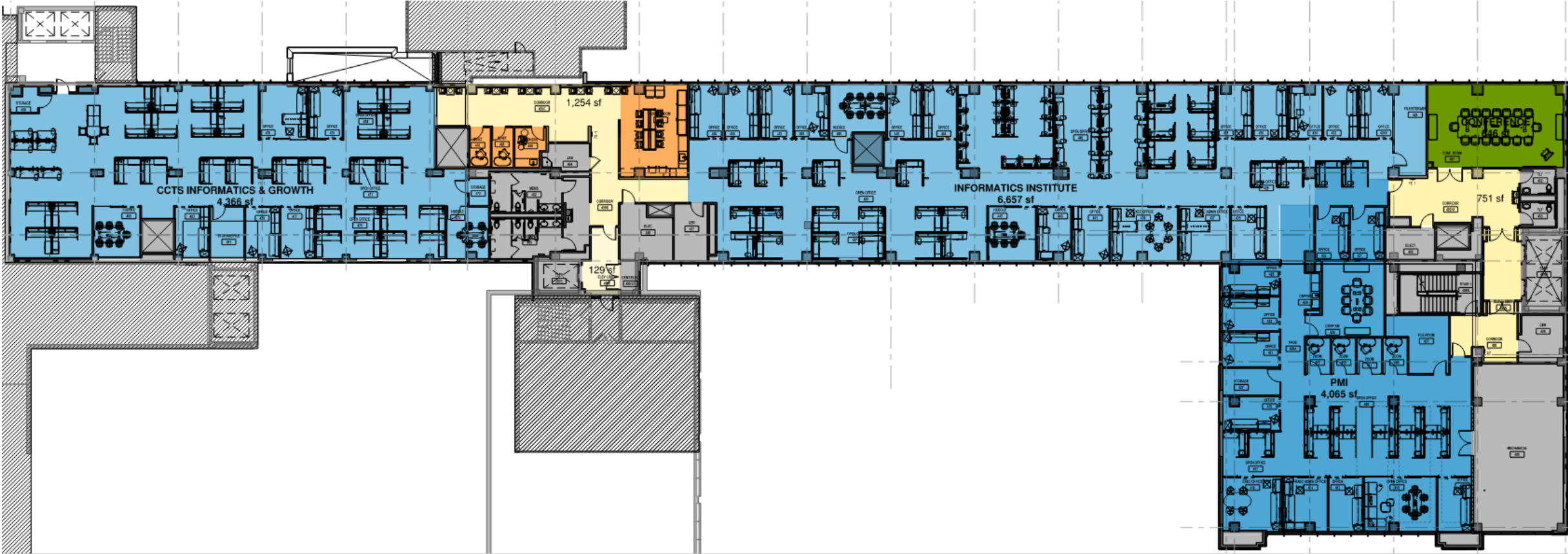
Programming

- Dry Lab Phenotypes
 - Informatic/Computational
 - Centers and Institutes
 - Clinical Research Support
 - Information Technologies

- Executive Floor



Informatics and Computational



FOURTH FLOOR

Research Team = 1 Principal Investigator (PI) + 2-4 staff + students

Informatics and Computational





Centers and Institutes



THIRD FLOOR

1 PI, Staff, Specialized Space

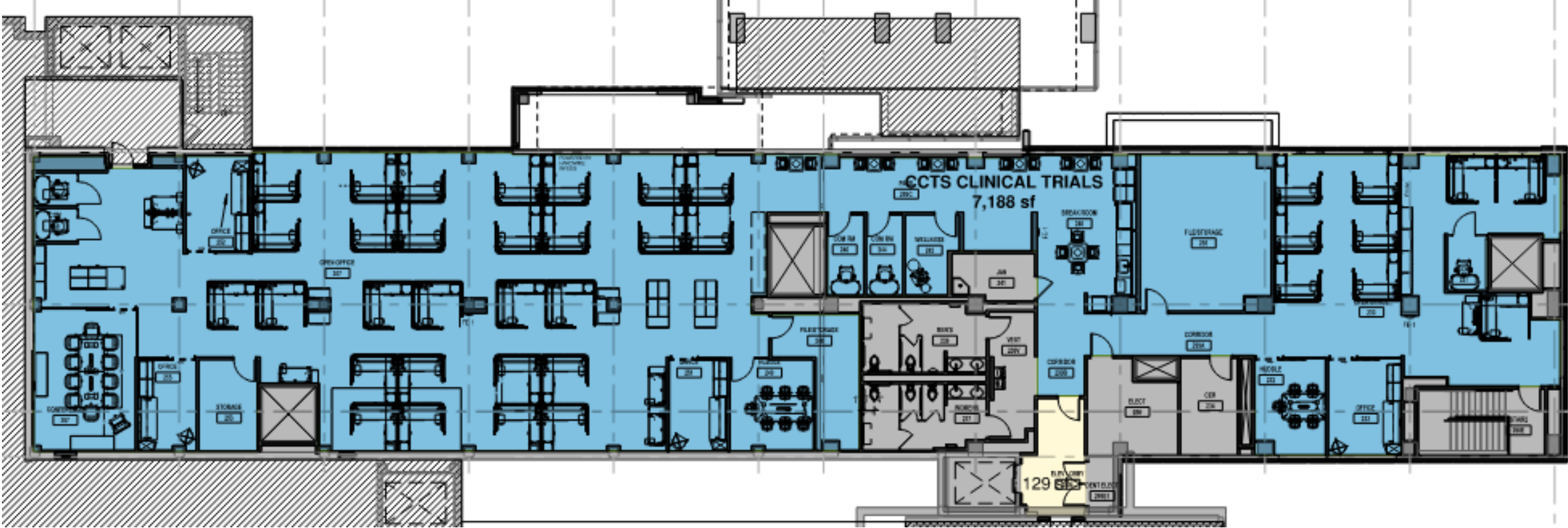


Innovation Clinic





Clinical Research Support

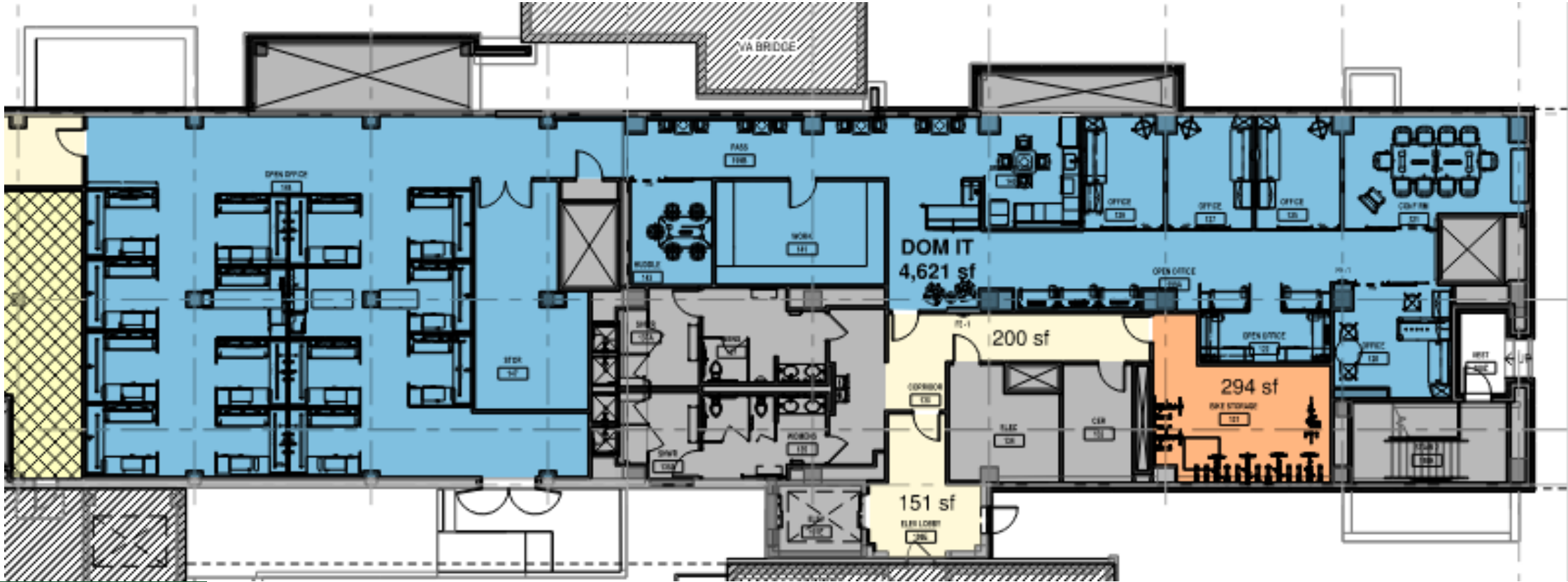


SECOND FLOOR

0 PI, 2 managers, 30 staff, 0 students, Binder Storage



Information Technologies



FIRST FLOOR

0 PI's, knowledgeable IT leader, collaboration areas, call center, storage



Modern Office Challenges

- **Occupancy**
 - Work at Home
 - Work on Campus
 - Hybrid
- **Transitioning from closed floor plans to open floor plans**
- **Sound**
- **What if I bring the whole group back?**
 - Schedule conference rooms
 - Use the conference center.



Flexible Spaces

Office

Private Hotel

Hot Desk

Simple



Flexible Spaces



Huddle



Private Conversation



Hotel



Hot Desk



Flexible Spaces



Assigned Workspace



Hotel



Hot Desk



Simple





Flexible Spaces



Work



Meet



Relax



Shade





Our “Tradeline Three” Takeaways

1. **Space is a “lens” to understand your organization**
2. **Space Phenotypes & Flexible Spaces**
3. **Be intentional about creating your connections**

Bonus: Nugget Ice



