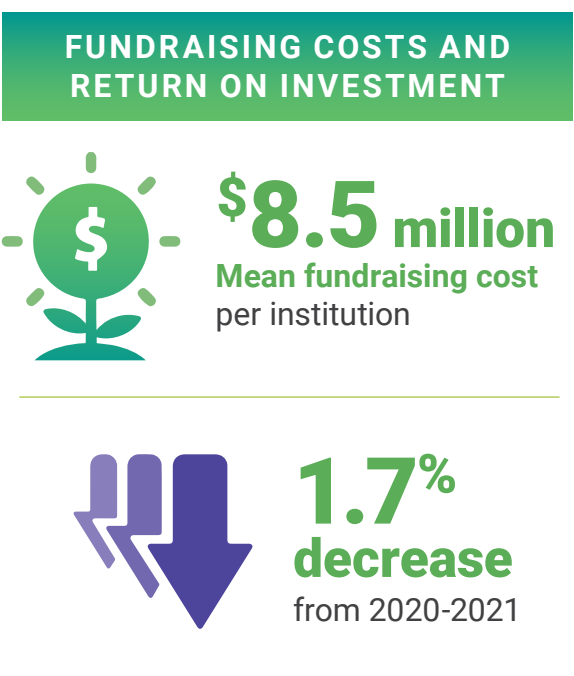
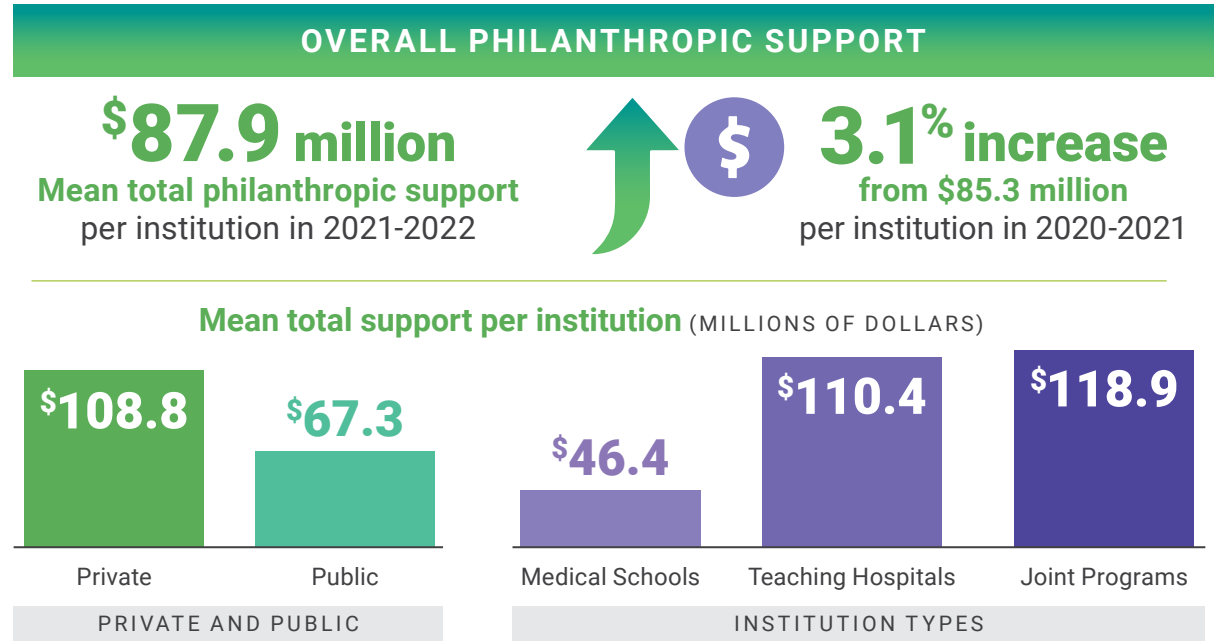


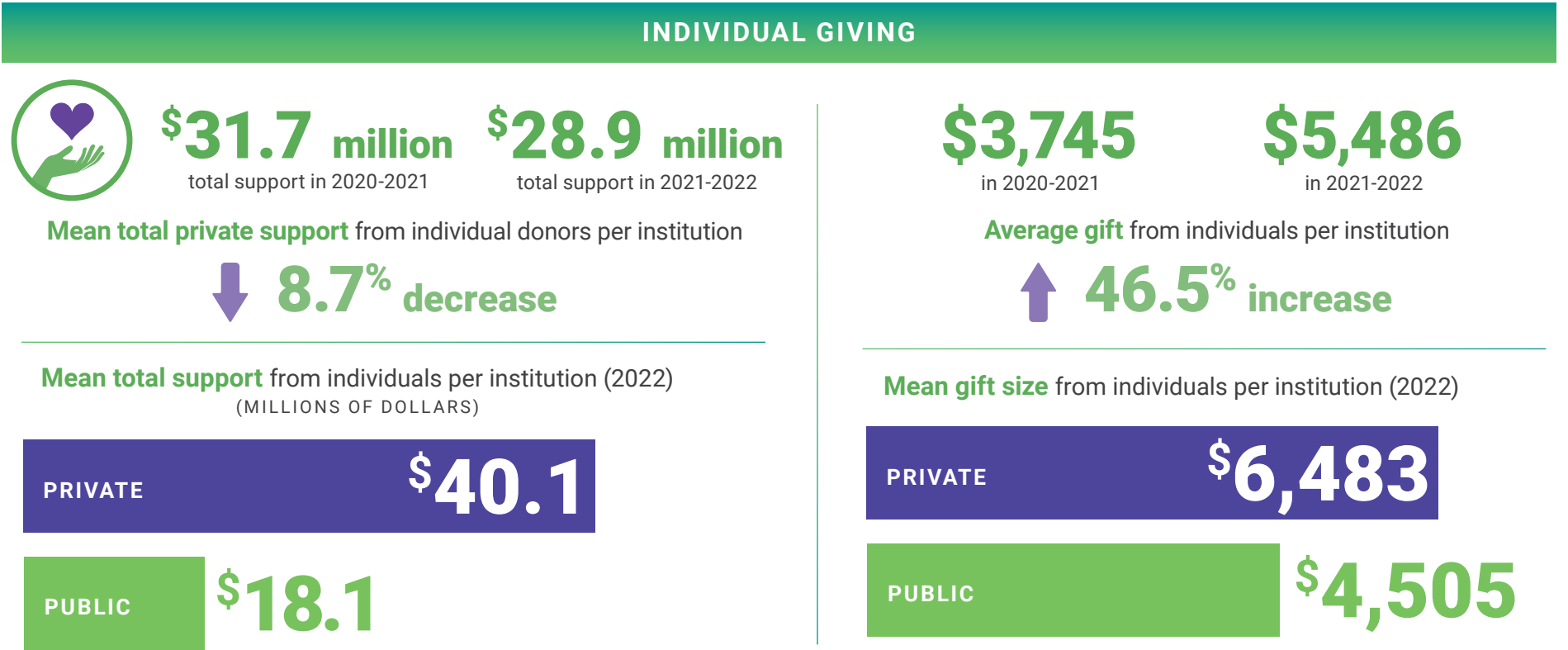
2022 Fundraising Trends at the Nation's Medical Schools and Teaching Hospitals

Each year, the AAMC conducts a national benchmarking survey to measure the impact, costs, and staffing of fundraising at its member medical schools and teaching hospitals. This survey helps medical school deans, teaching hospital and health system CEOs, chief development officers, and other academic medicine leaders assess the effectiveness of their institutional development programs. Through the survey's annual compilation and analysis of data, medical schools, teaching hospitals, and health systems can also identify philanthropic trends useful for development planning and management.

Highlighted here are key results from the 2022 survey of 133 institutions (reporting 2021-2022 gift year data) as of Aug. 21, 2023.*



357 of these gifts and pledges were greater than \$5 million



*Note: The data in this infographic provide insights into the COVID-19 pandemic's impact on fundraising for AAMC-member institutions.