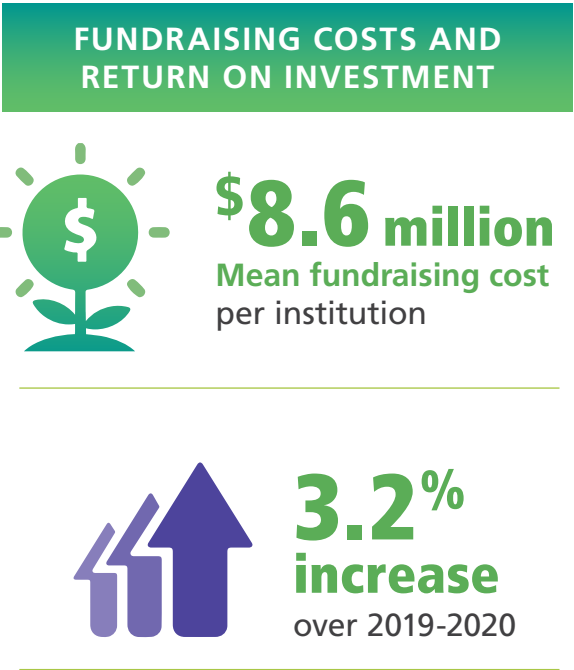
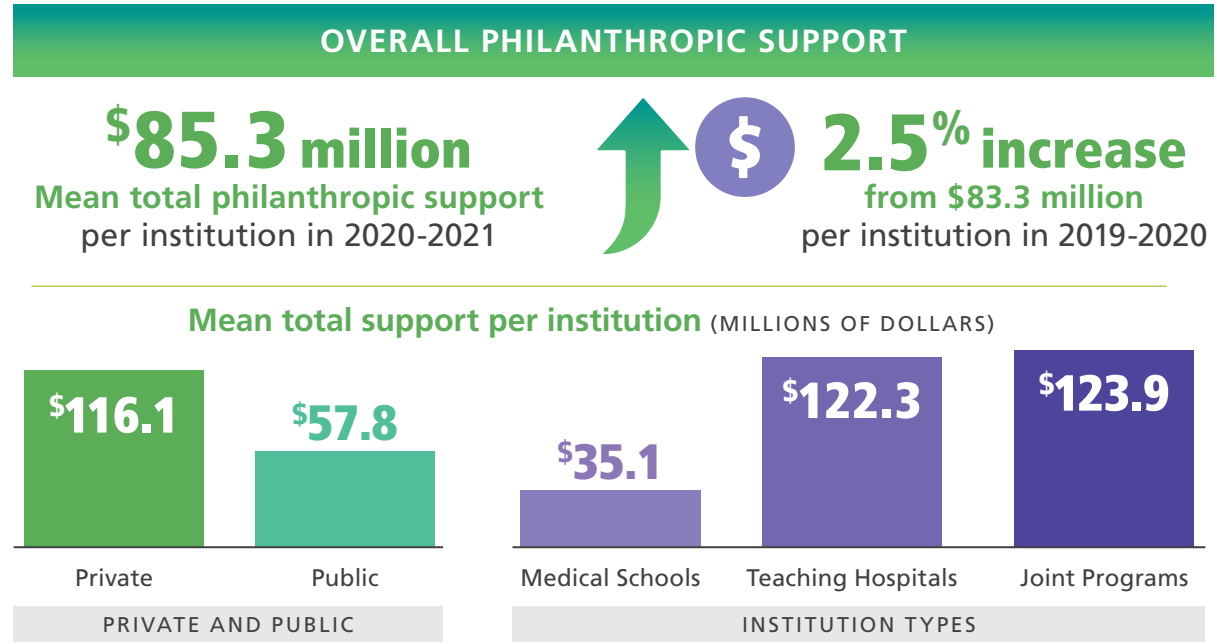


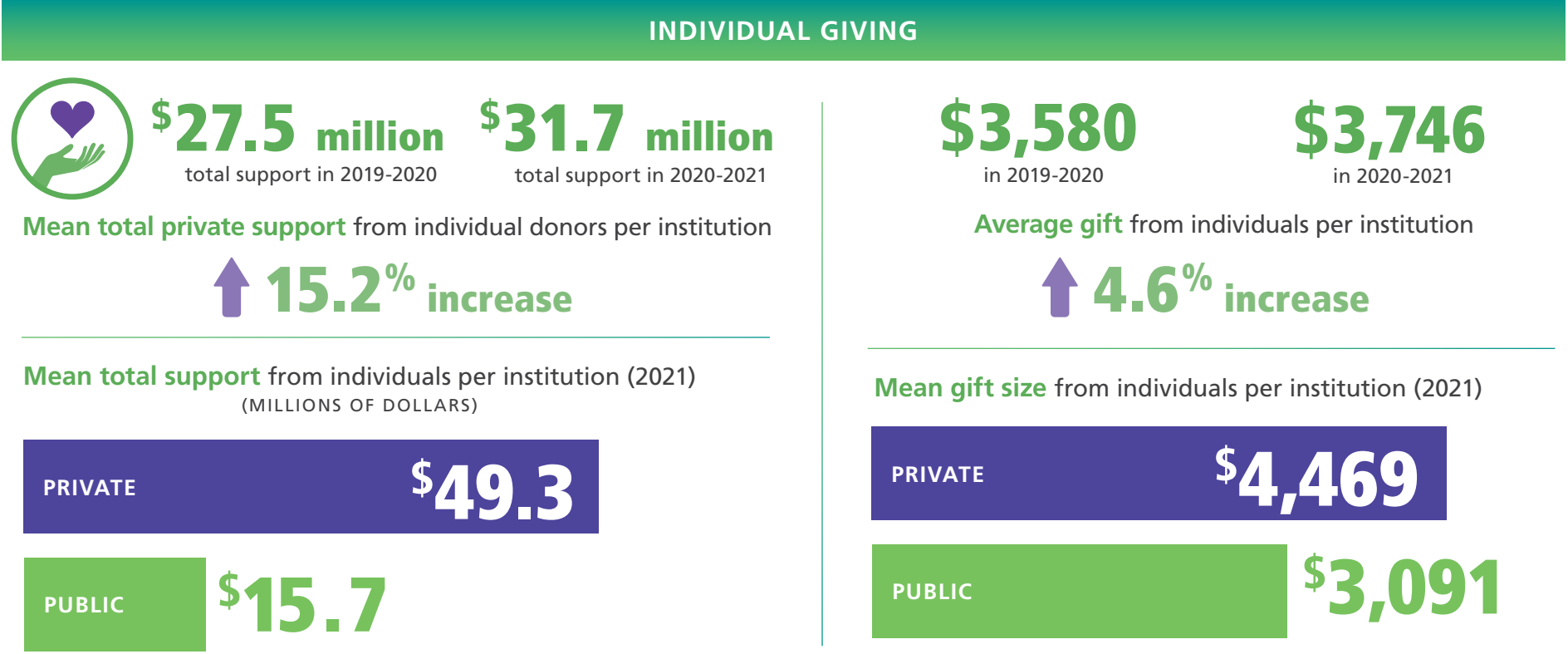
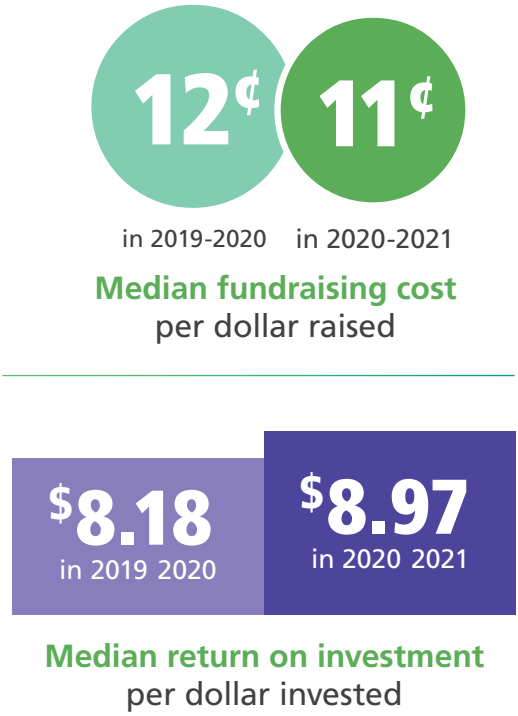
# 2021 Fundraising Trends at the Nation's Medical Schools and Teaching Hospitals

Each year, the AAMC conducts a national benchmarking survey to measure the impact, costs, and staffing of fundraising at its member medical schools and teaching hospitals. This survey helps medical school deans and teaching hospital CEOs assess the effectiveness of their institutional development programs. Through the survey's annual compilation and analysis of data, medical schools and teaching hospitals can also identify philanthropic trends useful for development planning and management.

Highlighted here are key results from the 2021 survey of 124 institutions (reporting 2020-2021 gift year data) as of Aug. 22, 2022.\*



**303** of these gifts and pledges were greater than \$5 million



\*Note: The data in this infographic provide insights into the COVID-19 pandemic's impact on fundraising for AAMC-member institutions.