

**DEVELOPING AN
INTERNATIONALIZATION
FRAMEWORK –
ONE APPROACH**

GERONA MCGRATH

JULY 2022

MEMORIAL UNIVERSITY FACULTY OF MEDICINE

Faculty of Medicine “fast facts”:

- Founded in 1967 (~54 years old)
- 320 undergraduate medical students (80 per cohort)
- 280 postgraduates across 19 programs
- 260 graduate students (diploma, masters, PhD programs)
- 270 fulltime faculty (clinical and PhD)
- 1200 part-time faculty (many at distributed sites)
- 350 staff (administration/research)



OUR PLAN - DESTINATION EXCELLENCE

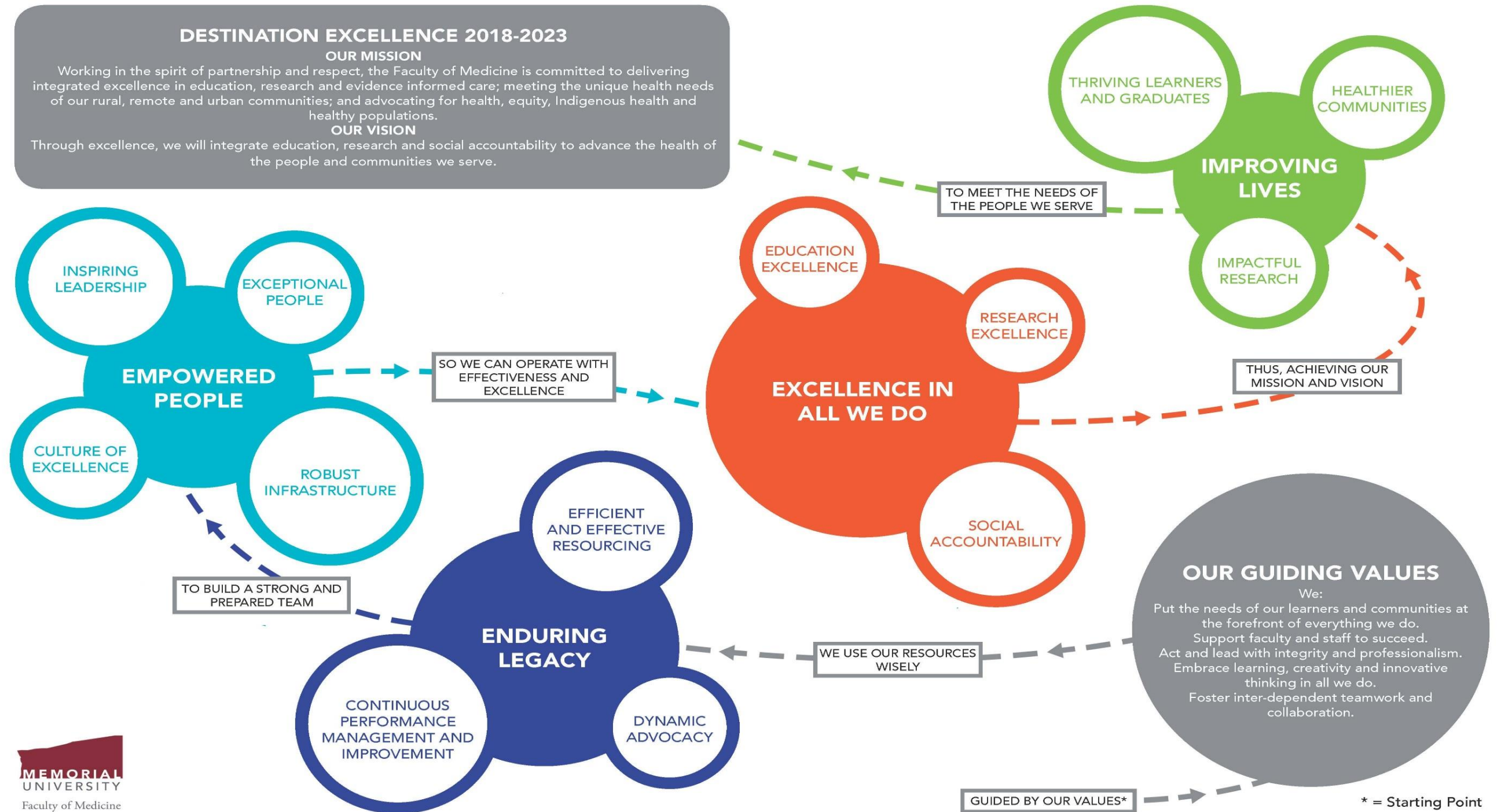
DESTINATION EXCELLENCE 2018-2023

OUR MISSION

Working in the spirit of partnership and respect, the Faculty of Medicine is committed to delivering integrated excellence in education, research and evidence informed care; meeting the unique health needs of our rural, remote and urban communities; and advocating for health, equity, Indigenous health and healthy populations.

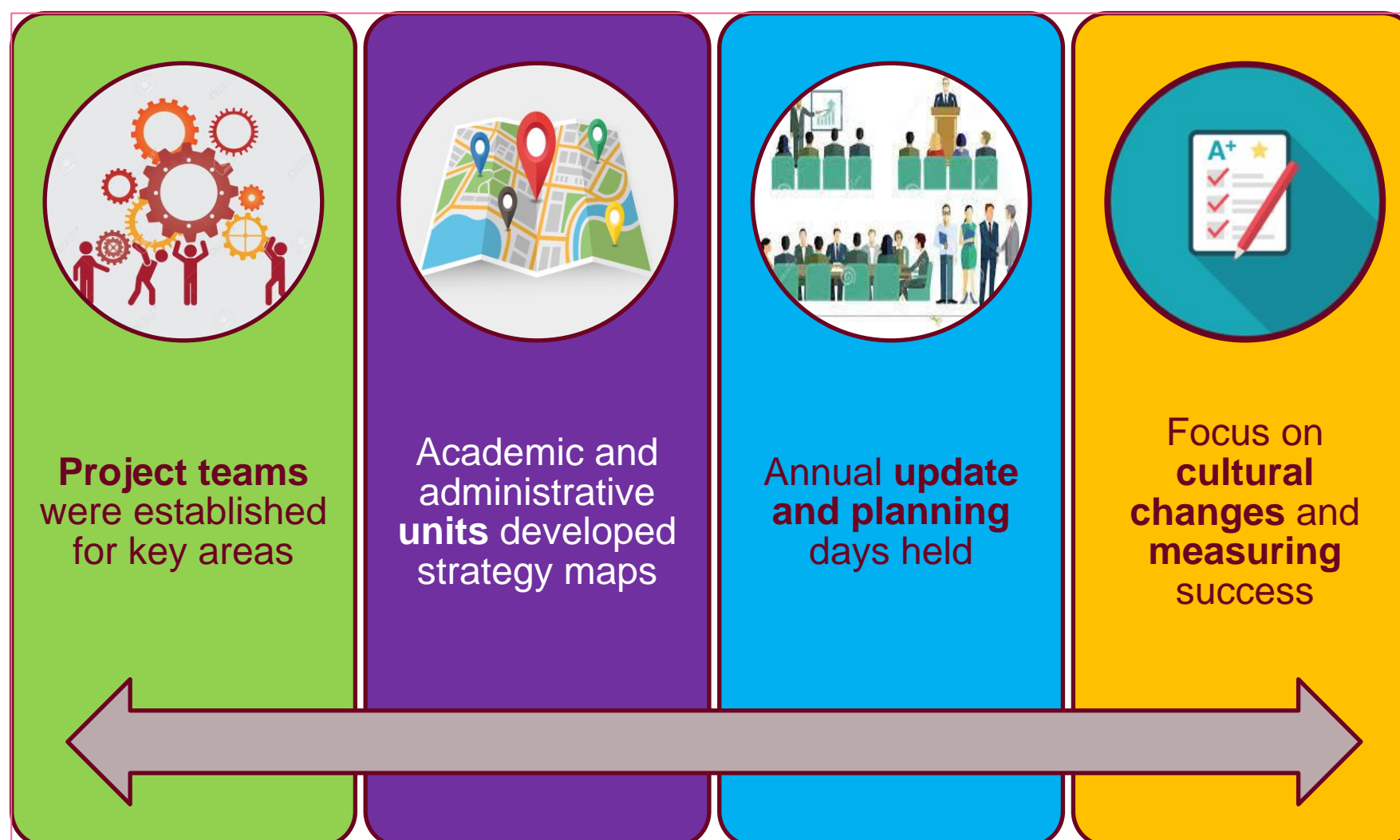
OUR VISION

Through excellence, we will integrate education, research and social accountability to advance the health of the people and communities we serve.



* = Starting Point

IMPLEMENTATION APPROACH



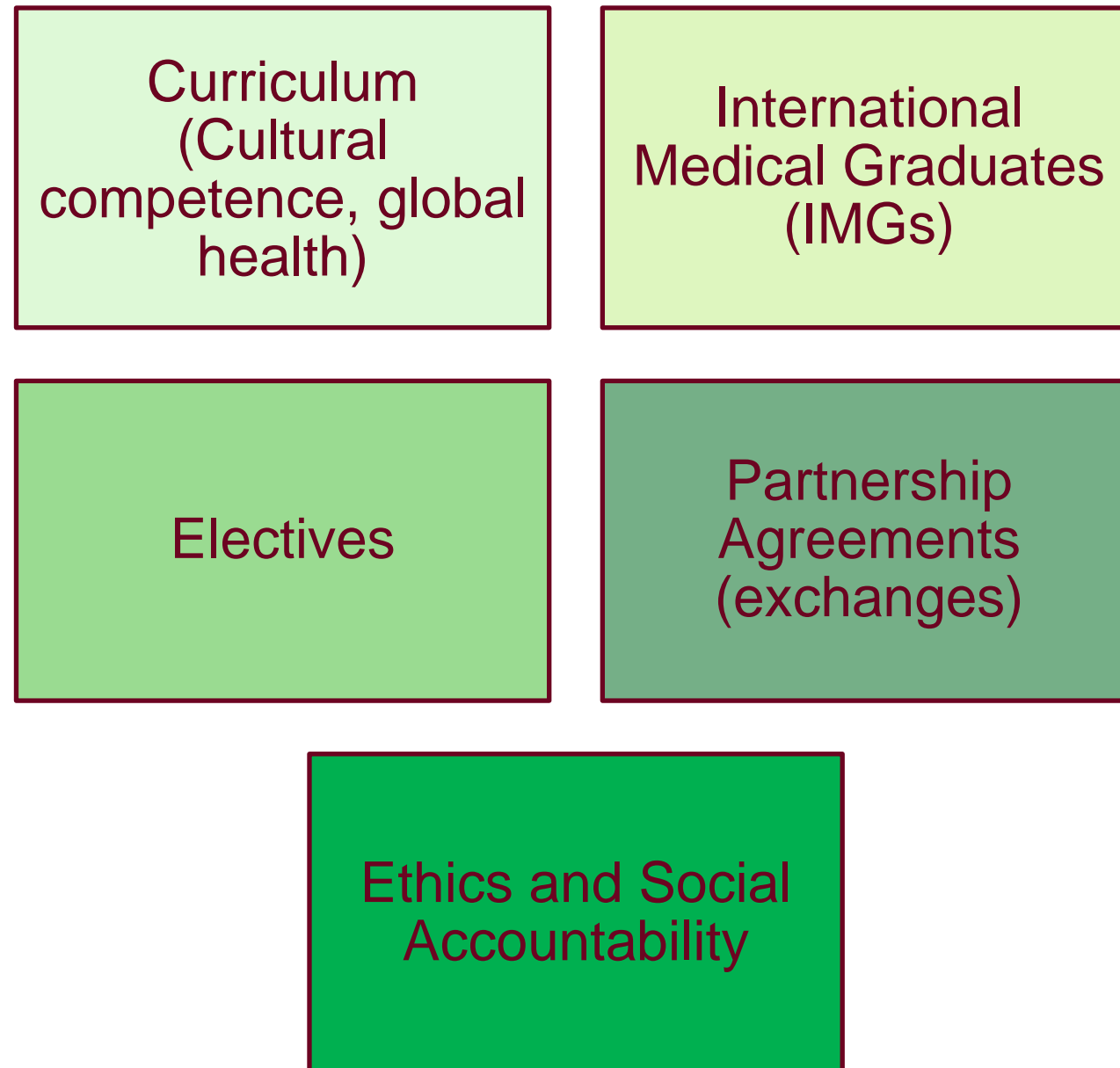
INTERNATIONALIZATION?



STEP 1: PUTTING THE PROJECT TEAM IN PLACE

- Co-chaired by a faculty member and a staff member with expertise / experience in the international matters
- Some individuals were assigned to the team by virtue of their official roles within the Faculty of Medicine
- Held an open call for interested faculty and staff
- Learner groups designated their respective representatives
- Representatives from the University's International Office were invited to participate

STEP 2: COMPREHENSIVE LITERATURE REVIEW



STEP 3: WORKING GROUPS PUT IN PLACE

**Ethics and Social
Accountability**

**Partnerships and
Agreements**

**Curricular Content Across
Programs**

**Graduate Enrollment
Management**

ETHICS AND SOCIAL ACCOUNTABILITY - FOUNDATIONS

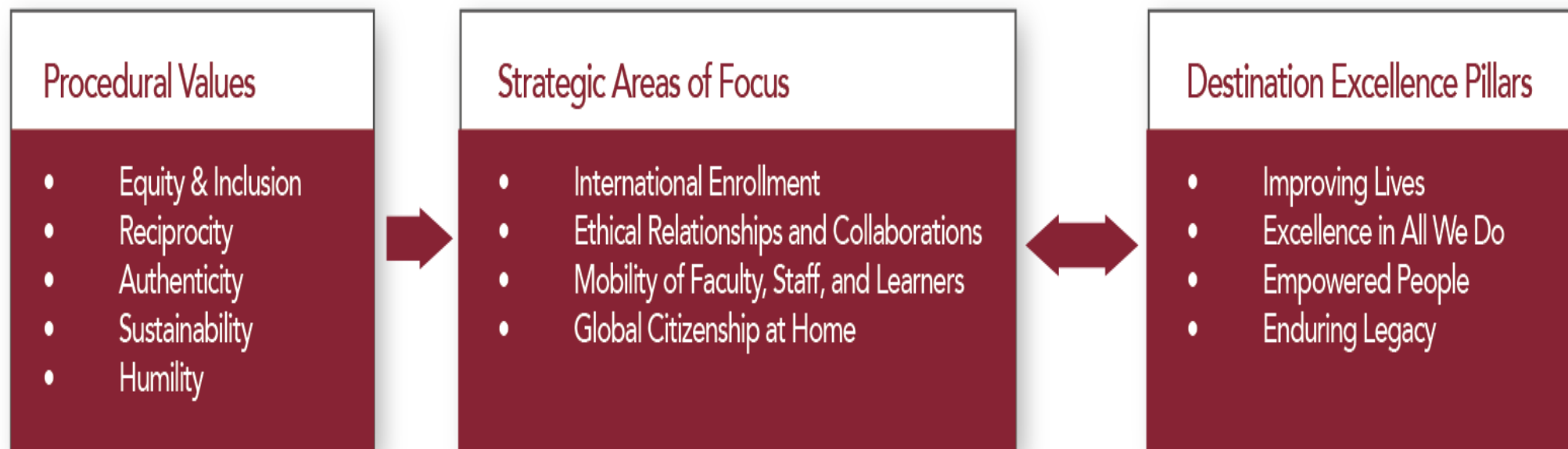
Procedural values:

- Equity & Inclusion
- Reciprocity
- Authenticity
- Sustainability
- Humility

Areas of focus:

- International Enrollment
- Relationship and Collaborations
- Mobility of faculty, staff, and learners
- Global citizenship at home

LINKAGES



Comments?

Questions?

Your experiences?