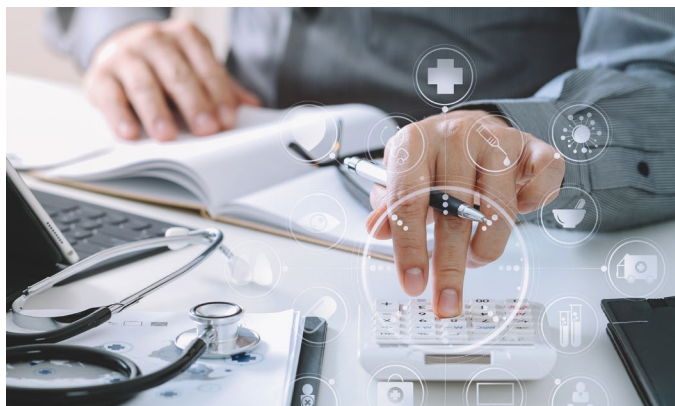
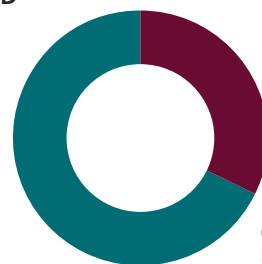


ECONOMIC IMPACT OF MEDICAL SCHOOLS AND TEACHING HOSPITALS



MEDICAL SCHOOLS AND
TEACHING HOSPITALS
CONTRIBUTED

**\$728
BILLION**
TO GDP IN 2019.

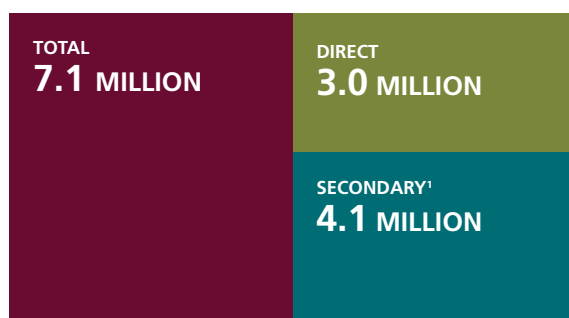


GDP FROM
MEDICAL SCHOOLS
\$235 BILLION

GDP FROM TEACHING
HOSPITALS
\$493 BILLION

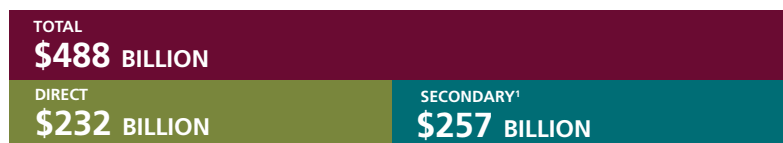
This equates to about 3.2% of U.S. GDP, or roughly \$2,218 per person.

JOBS

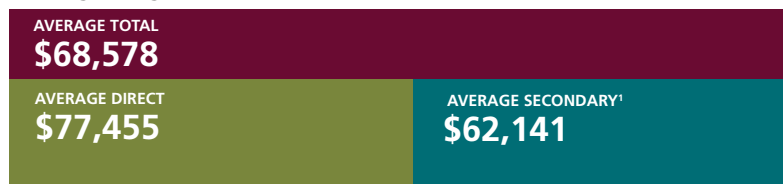


AAMC-member medical schools and teaching hospitals supported more than 7.1 million U.S. jobs in 2019. This is approximately 4.4% of jobs nationwide.

Total Wages, Salaries, and Benefits



Average Wages, Salaries, and Benefits



ADDITIONAL CONTRIBUTIONS FROM AAMC MEDICAL SCHOOLS AND TEACHING HOSPITALS



EDUCATION

U.S. medical schools
graduated

20,921

new MDs in 2021.²



RESEARCH

Research at medical schools
and teaching hospitals
added

\$32.6 BILLION

to local economies in 2019.



PATIENT CARE

AAMC-member teaching
hospitals operated

98%

of all comprehensive cancer
care centers.³



COMMUNITY BENEFIT

The average AAMC-
member teaching hospital
spends

\$148 MILLION

annually on community
benefit.⁴

¹ Secondary effects include two additional economic effects. The first is the new business spending as AAMC-member institutions buy more goods and services from other local businesses to meet growth. The second is the additional spending brought about by the salaries and benefits associated with job creation.

² AAMC. Table 1: Applicants, matriculants, enrollment, and graduates of U.S. MD-granting medical schools, 2012-2013 through 2021-2022. AAMC 2021 FACTS. <https://www.aamc.org/media/37816/download?attachment>. Published Nov. 17, 2021. Accessed April 6, 2022.

³ AAMC analysis of membership data as of December 2021 and 2022 data from the National Cancer Center Institute's Office of Cancer Centers.

⁴ AAMC analysis of the FY 2020 Council of Teaching Hospitals and Health Systems Annual Survey of Hospital Operations and Financial Performance. Data are based on voluntary survey responses from AAMC-member teaching hospitals that were required to submit IRS Form 990.