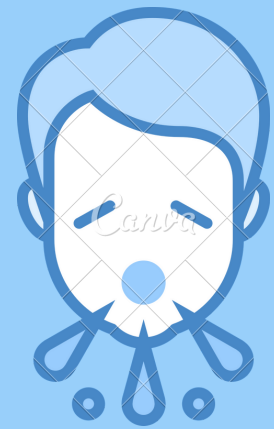


MEDICAL IMPACT

SYMPTOMS

90%

of cases are asymptomatic, mild, or moderate



COMMON SYMPTOMS

include fever, shortness of breath, nasal congestion, runny nose, diarrhea, and vomiting.

ASYMPTICAL PRESENTATION

Symptoms may present differently from patient to patient



RISK

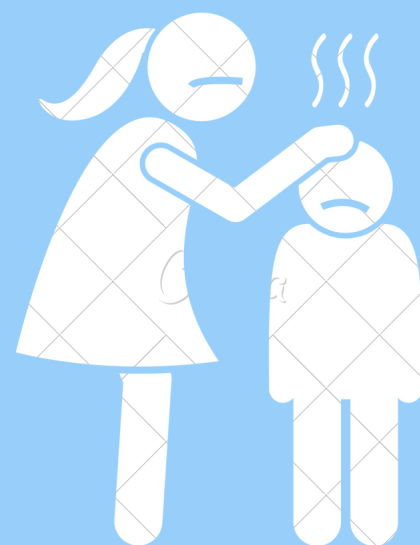


2%

of cases reported have been people under the age of 20

MIS-C

There have been case reports of a rare, serious multi-system inflammatory syndrome in children, but scientists are still learning about its links with COVID-19



COVID-19 IN ADOLESCENTS & CHILDREN

Health Guidelines for Parents

If your child develops symptoms that resemble COVID-19:

- **Call your PCP.** They will advise you if your child will need an in-person or telehealth visit with a practitioner
- However, if your child develops difficulty breathing, turns blue, or has fainted, **call 911** and go to the emergency department
- Visit the **CDC website** for more information

SOURCE: United Nations Policy Brief, "The Impact of COVID-19 on children," 15 April 2020/United Nations [Web Resource]

SOCIAL IMPACT

EDUCATION



188

countries have imposed country-wide school closures

1.5 BILLION students have had their education disrupted



> 368 MILLION

children rely on school meals for a reliable source of daily nutrition



SAFETY

60% of children live in countries with some type of lockdown in place, increasing vulnerability to violence and abuse at home



VIRTUAL PLATFORMS

used for education and communication leave children more vulnerable to online predators

