

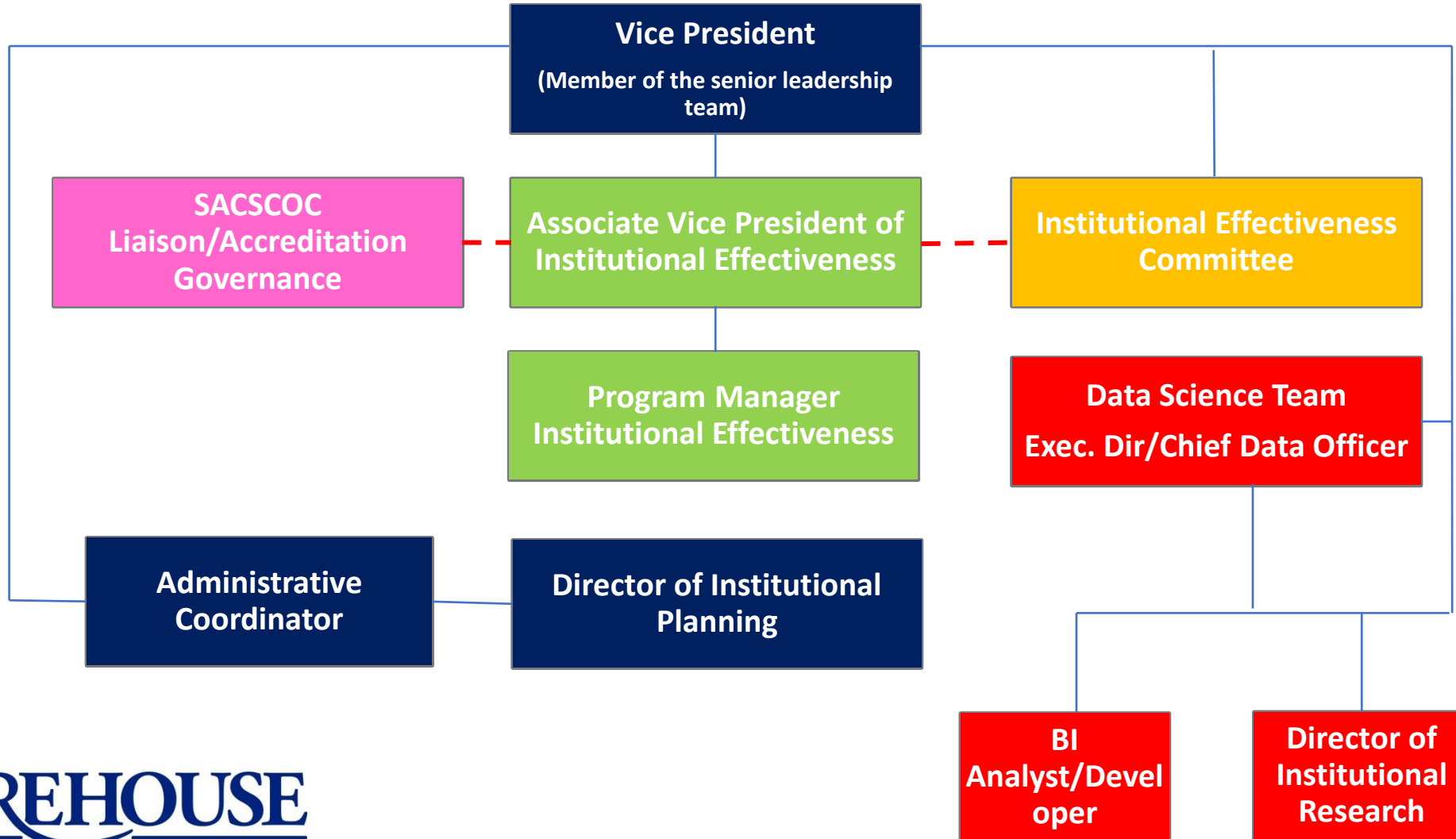


# Morehouse School of Medicine Office of Strategy and Institutional Effectiveness

- ❖ Organizational Structure
  - ❖ Scope of Work
- ❖ Functional Responsibilities



# MSM Office of Strategy and Institutional Effectiveness (OSIE)



# OSIE: Scope of Work

Institutional  
Effectiveness

Strategy and  
Execution  
Management

Culture Shift

Change  
Management

# OSIE: Function

