



B'more for Healthy Babies Results and Vision for Baltimore City

BHB 10th Year Anniversary
Celebration



The Bold Vision

**All of Baltimore's
children are born
healthy and ready to
grow and thrive in
healthy families**





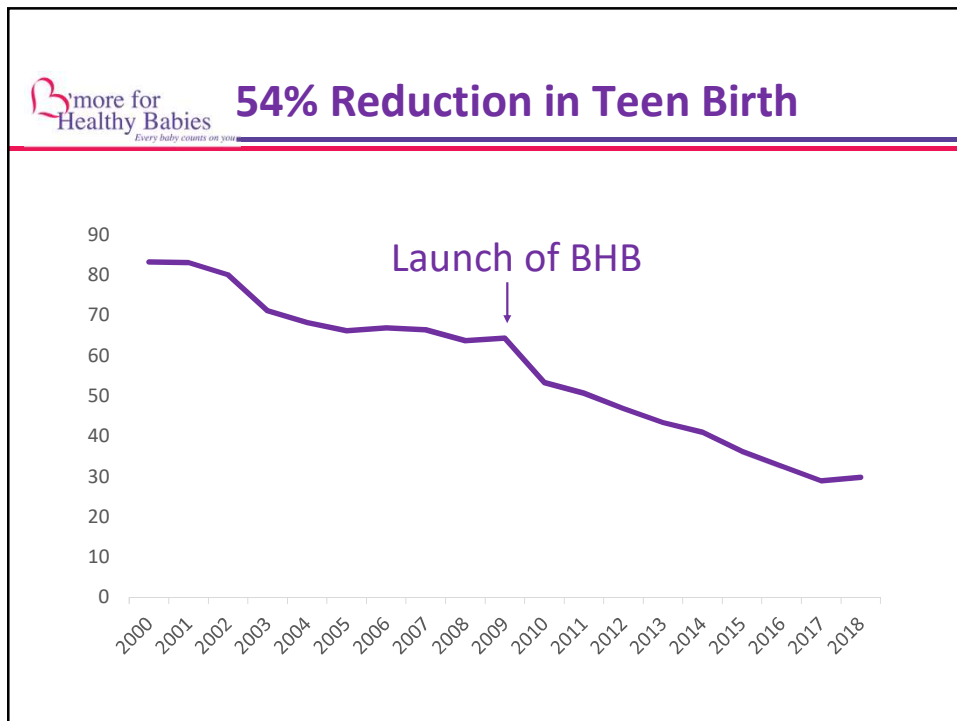
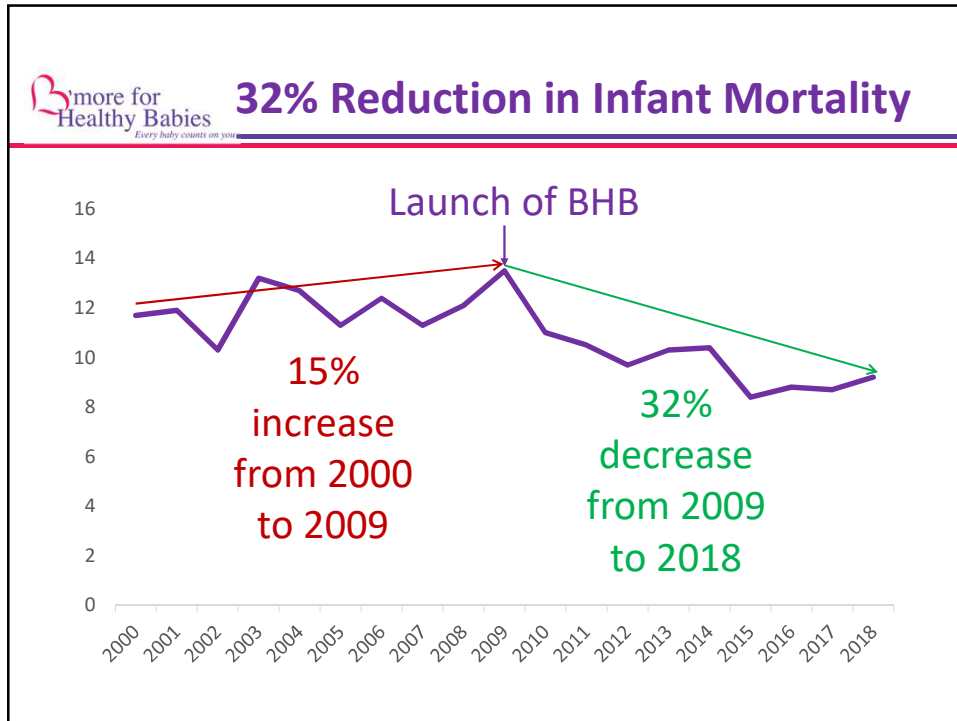
10 Years of B'more for Healthy Babies



150 Partners Behind the Scenes



A better way
of working





More BHB Results, 2009-2018

36% reduction in Black-White racial disparity in infant mortality

41% decrease in sleep-related infant deaths

Zero infant mortality in Upton/Druid Heights for 2 years

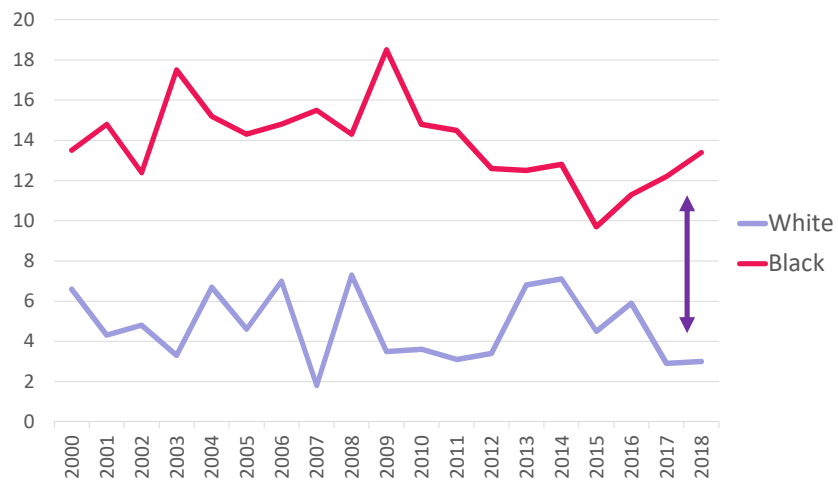
76% decrease in Black-White disparity in teen birth

600+ cribs and in-home safe sleep education sessions every year

Care coordination for more than 4,300 high-risk pregnant women and infants every year



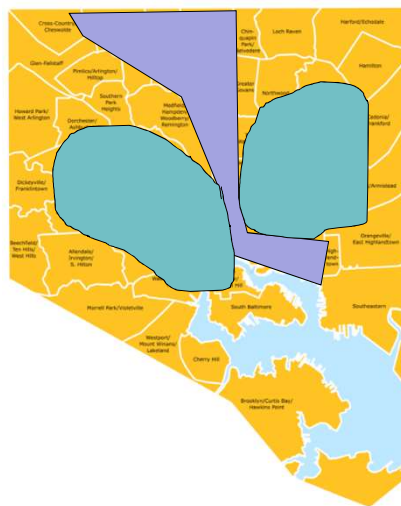
We Still Have a Problem



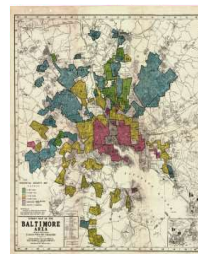
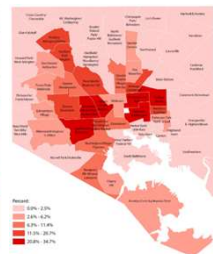
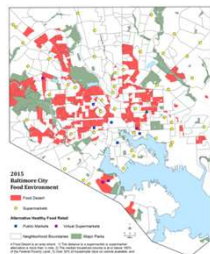


Baltimore City

- ❑ City of neighborhoods
- ❑ Population of 619,000 people
 - ❑ 63% Non-Hispanic Black
 - ❑ 28% Non-Hispanic White
 - ❑ 5% Hispanic
 - ❑ 3% Asian
 - ❑ 1% All other races
- ❑ 34% of children live below the poverty line
- ❑ ~7,600 births annually
- ❑ 7 delivery hospitals and world-class health care



Most Baltimore Maps Are the Same



Food Deserts

Shooting Calls

Vacancies

Redlining

Most indicators—health, economics, violence, built environment—break along the White L and the Black Butterfly



Why is There a Disparity in Infant Mortality?

It's Not Race

Differences in maternal behavior and genetics do not explain the racial disparity

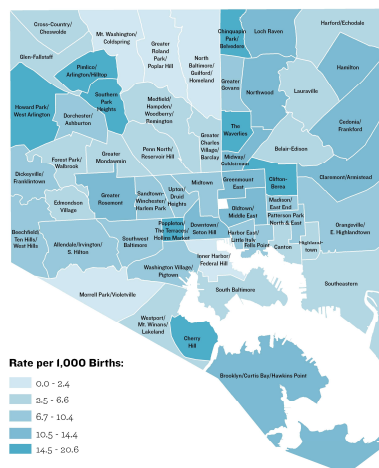
It's Not Poverty

Poverty and education matter but also don't fully explain the disparity

It's Experiences of Racism

- Racial residential segregation (isolation segregation)
- Biological response to chronic stress over the life course

Infant Mortality Rate, 2013-2017



BHB Strategy and Goals

To eliminate infant mortality and disparities in maternal and child health in Baltimore, we must do four things:



Improve health before pregnancy



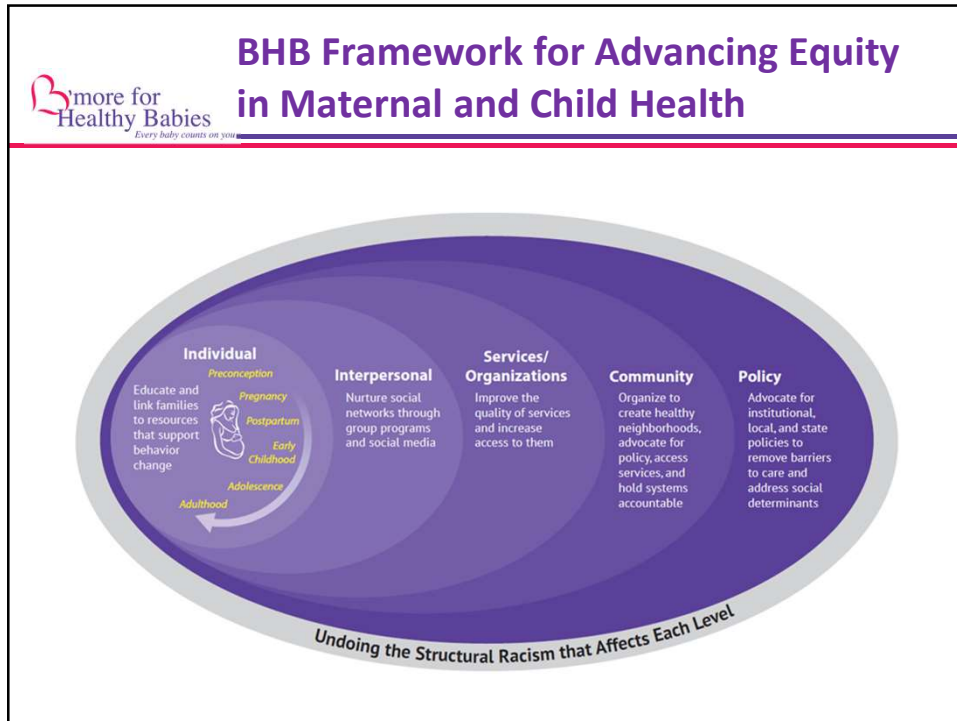
Ensure quality care during pregnancy



Support families to raise healthy babies



Promote social and economic justice



BHB Framework for Advancing Equity in Maternal and Child Health

more for Healthy Babies
Every baby counts on you

Rally Around Priority Health Areas

Communications campaigns, policy change, improved services, community mobilization for each area

- Mental health and stress
- Nutrition
- Parenting
- Safe infant sleep
- Sexual health
- Social-emotional development
- Substance use



Advocate for Equitable Policies

Three types of policy change targets:

- Funding and service improvement
- Priority health areas
- Social determinants of health/anti-racism



Mobilize Community

BHB Communities

- Support teams in Upton/Druid Heights and Patterson Park
- Piloting partnership with Judy Centers in high-risk neighborhoods

Faith-based outreach

Citywide events

Community Advisory Board





Transform Services for Families

Public health—Care coordination, home visiting, WIC, early intervention, immunizations, family planning, Judy Centers

Health care services—Obstetric, pediatric

Social services—Housing, income, and more

Anti-racist
Fairly funded
High quality
Accountable
Strengths based
Trauma informed
Population change



Connect People to Resources

Make sure every part of BHB connects individuals and families to resources using one always updated database

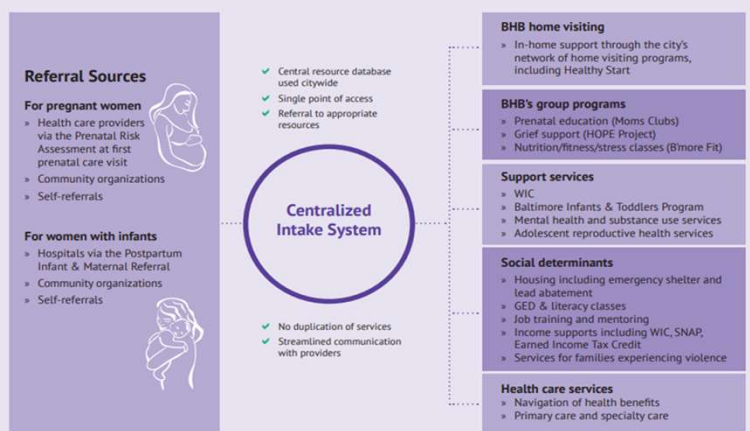


Housing
Social support
WIC
Income supports
Early intervention
Goods and supplies
Health Care
Parenting classes



The Bedrock of BHB—The Centralized Intake System

OUR VISION FOR BALTIMORE'S PRECONCEPTION, PREGNANCY, AND EARLY CHILDHOOD SYSTEM



Follow Us on Social Media



@BmoreforBabies



www.facebook.com/bmoreforhealthybabies

Visit our site:

<http://www.healthybabiesbaltimore.com>



Thank You!

Rebecca Dineen

Baltimore City Health
Department

 **B'more for
Healthy Babies**
Every baby counts on you