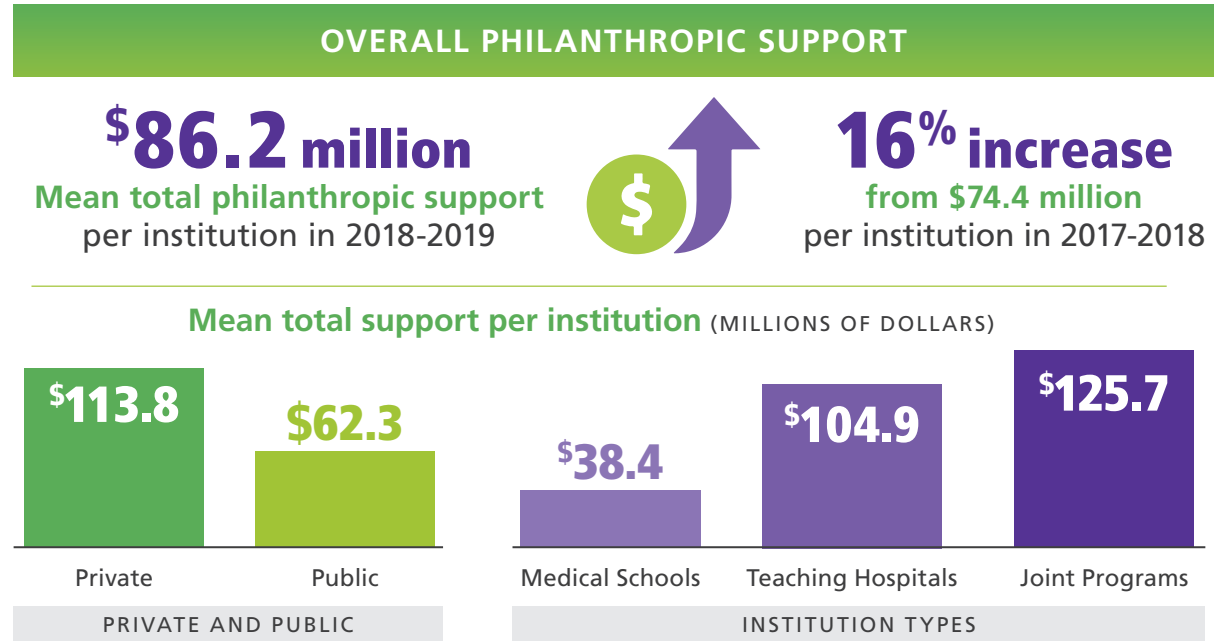


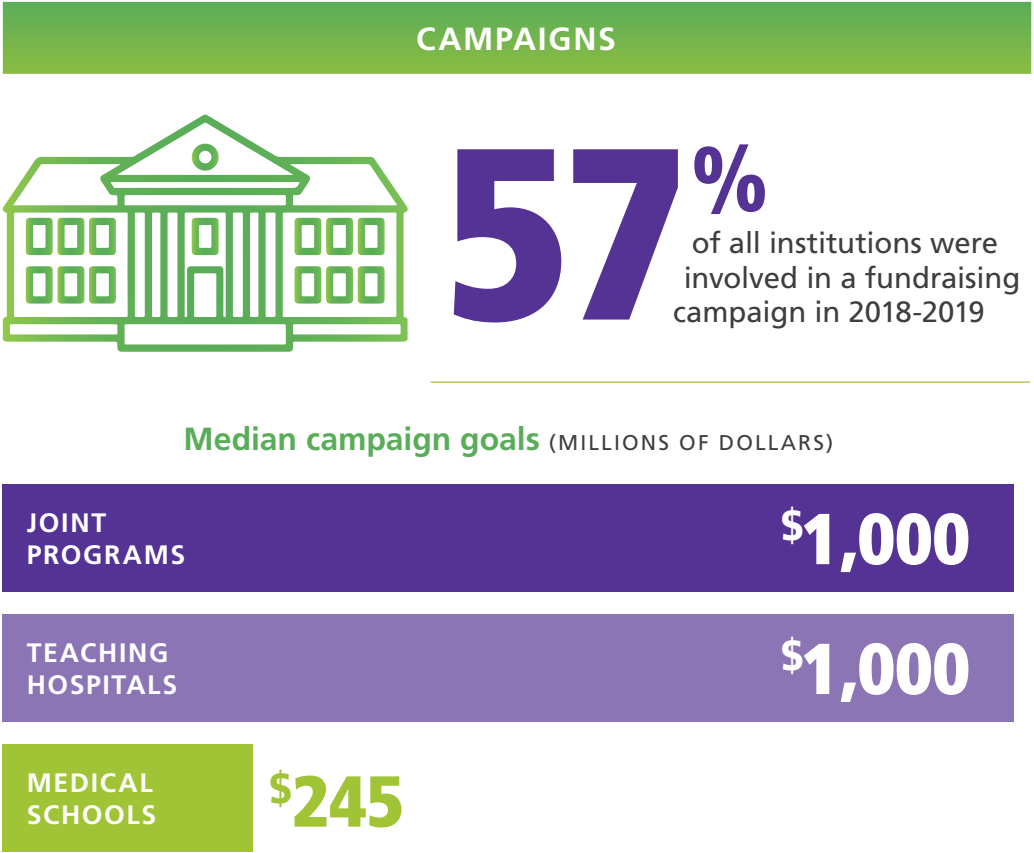
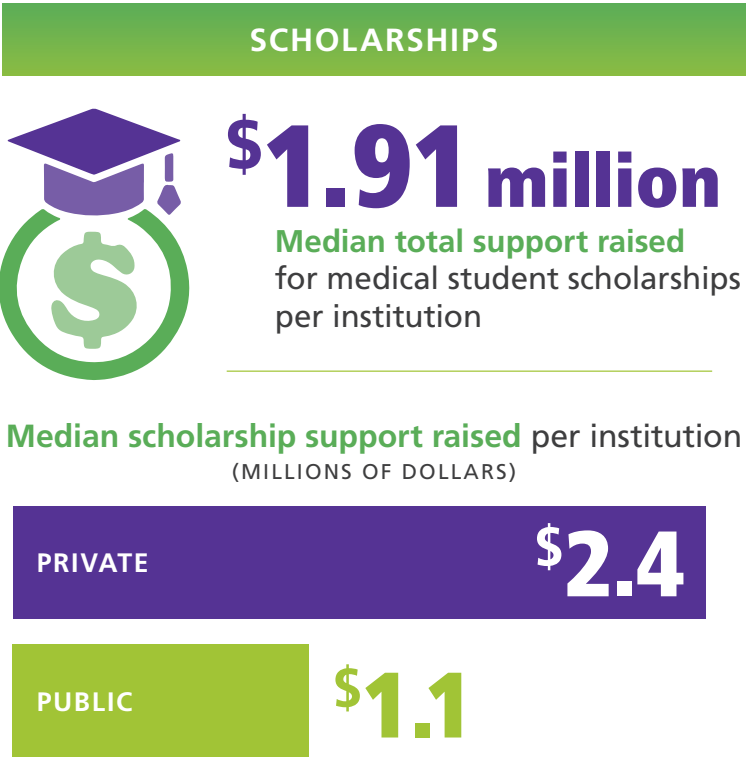
2019 Fundraising Trends at the Nation's Medical Schools and Teaching Hospitals

Each year, the AAMC conducts a national benchmarking survey to measure the impact, costs, and staffing of fundraising at its member medical schools and teaching hospitals. This survey helps medical school deans and teaching hospital CEOs assess the effectiveness of their institutional development programs. Through the survey's annual compilation and analysis of data, medical schools and teaching hospitals can also identify philanthropic trends useful for development planning and management.

Highlighted here are key results from the 2019 survey of 113 institutions (reporting 2018-2019 gift year data) as of Aug. 27, 2020.*



300 of these gifts were greater than \$5 million



*Note: The data in this infographic represent development activity prior to the COVID-19 pandemic. Next year's survey reporting 2019-2020 gift data will provide insight into the initial impact of the pandemic on fundraising for AAMC member institutions.