



HEALTH EQUITY CALL FOR RESEARCH:

AAMC Consumer Survey of
Health Care Access



Informational Webinar
June 18, 2020

Association of American
Medical Colleges

Michael Dill
Director, Workforce Studies

Natalie Felida, MPH
Research Analyst, Workforce Studies

Funmi Makinde, MPH, CHES
Health Equity Research Analyst

Karey M. Sutton, PhD
Director, Health Equity Research Workforce

2020
Health
Equity
Call for
Research



What is AAMC CHARGE?

AAMC CHARGE is a forum for investigators, clinicians, and community partners who design and implement research that eliminates health and health care inequities.

What does AAMC CHARGE do?

- Share accomplishments and crowdsource opportunities for professional achievement.
- Facilitate innovative multi-sector partnerships, collaborations, and research that contribute to the evidence base for solutions to health and health care inequities.
- Collaborate on policy work that impacts health equity at institutional, local, state, and federal levels.

How can I get involved?

Email healthequityresearch@aamc.org to join!



[AAMC.ORG/CHARGE](https://www.aamc.org/charge)

Association of
American Medical Colleges

- Joint call between the AAMC's Workforce Studies team and Health Equity Research and Policy team
- Provides access to never before publicly available data
- An opportunity to contribute innovative, actionable, relevant research to the health/health care equity evidence base

2020
Health
Equity
Call for
Research



DEFINITIONS

- **Health Equity** - A state where everyone has the opportunity to attain his or her full health potential and no one is disadvantaged because of their social position or other socially derived circumstance.
- **Health Disparity/Inequity** - A measurable, systematic, avoidable, and unjust difference in *health* between groups, stemming from differences in levels of social advantage/disadvantage.
- **Health Care Disparity/Inequity** - A measurable, systematic, avoidable, and unjust difference in *health care access, utilization, quality, and outcomes* between groups, stemming from differences in levels of social advantage/disadvantage.



WHO CAN APPLY?

- Open to students, community based or faith based organizations, nonprofits, federal agencies, and institutions of higher education.
- **Multi-institution and multisector collaborations are encouraged.**
- **Must be a participant of AAMC CHARGE prior to applying.**
 - To join, email healthequityresearch@aamc.org with your name, title, and organization.

- Once applicants have joined AAMC CHARGE, they can submit a **brief proposal** online.
- Applications from individuals who are not part of AAMC CHARGE **will not** be reviewed.
- Proposal requirements are listed in the full Request for Proposals (RFP), and include both project and researcher information.

APPLICATION PROCESS

Proposal Requirements:

1. Project timeline

- Projected completion date **must** be within 12 months.

2. The research question(s)

3. Description of the study

- How will this study build the evidence base for health/health care equity solutions?

4. An outline of the approach

- Describe the work that will be done and the process(es) involved to execute the project
- **Specify variables you intend to use in this section**

APPLICATION PROCESS

Key things to note:

- You must have an account with CadmiumCD to apply.
 - Application is divided into two portions, the Researcher Information and Proposal Outline.
 - Only 1 submission allowed per researcher/research team. **No individual can serve as the primary applicant for more than one proposal.**
- Curriculum Vitae must be uploaded for each member of the research team, NOT just primary applicant. **Maximum of 5 researchers** per team.
- REMEMBER to list the names of variables to be used (found in Codebook) in your outline.

APPLICATION PROCESS

- Over 2000 respondents who self reported that they needed health care within the last year
- Multi-year survey (19 “waves”) that:
 - Provides demographic/contextual health information for nationally representative sample.
 - Collects a wealth of data ranging from patient-provider communication to the use of telemedicine.
 - Has been used/referenced in peer-reviewed publications and data snapshots.

AAMC Consumer Survey of Health Care Access

- Since December 2010
- Survey is released every 6 months
- Online panel
- People who need care

Data Highlights: Consumer Survey of Health Care Access

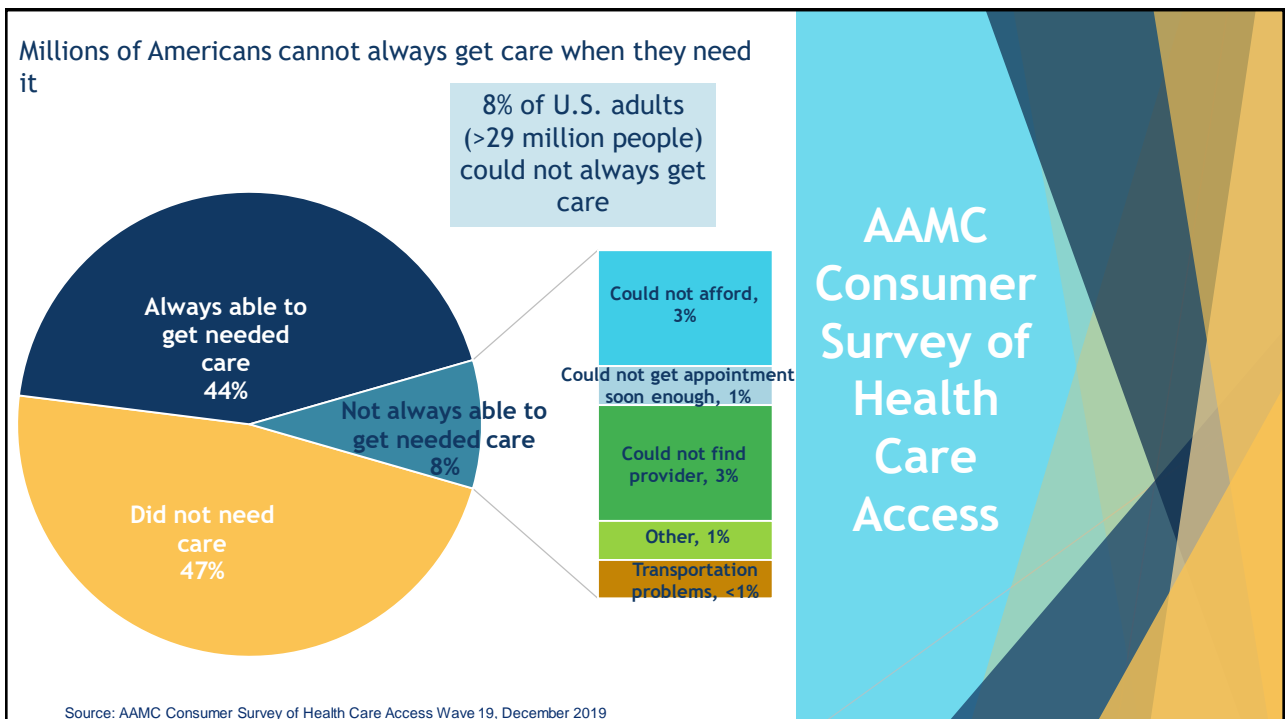
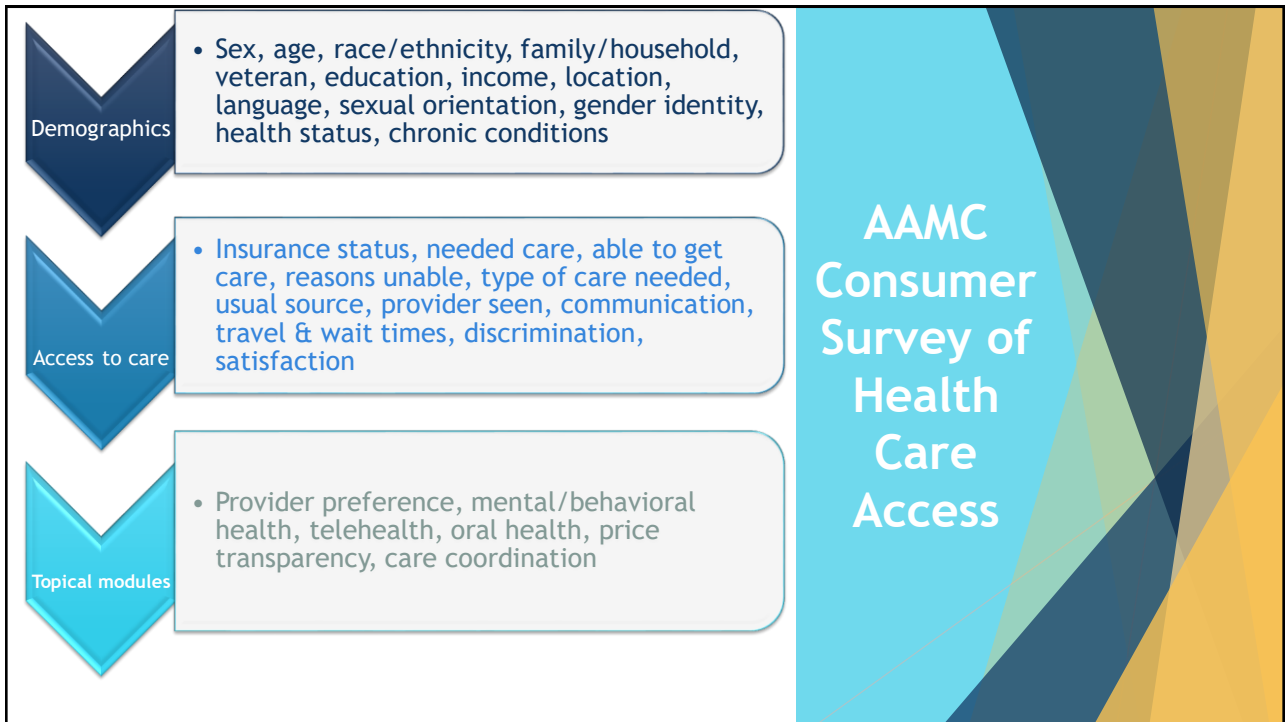
Summary

Twice each year, the AAMC fields a Consumer Survey of Health Care Access to assess access to health care services in the United States. Emphasizing a consumer perspective, the Consumer Survey complements our ongoing research on the physician workforce. Significantly, the Consumer Survey takes an inclusive approach to defining access, beginning with whether or not care is received at all, and also seeking to better understand the roles of health insurance coverage, having a usual source of care, the timeliness and location of care, and the quality of patient-provider communications.

AAMC Consumer Survey of Health Care Access

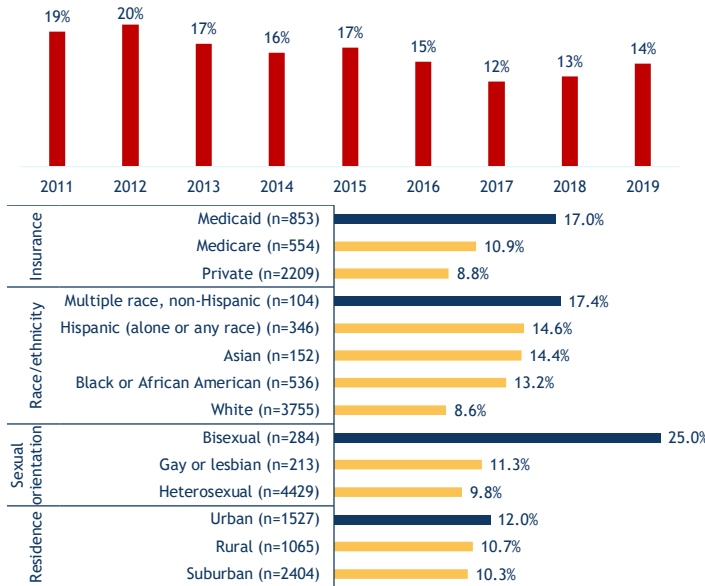
- Core sample = 2,000 respondents
- Stratified by age and health insurance status
- Every other survey wave oversample = 1,500
 - Minority
 - Rural
 - Medicaid recipients
 - Low income
 - Uninsured
- $2,000 + 2,000 + 1,500 = 5,500$ unique responses annually
- Data are weighted by sex, age, race and ethnicity, employment status, household income, educational attainment and geographic region using data from the U.S. Census

AAMC Consumer Survey of Health Care Access



Access has improved, but it is not the same for everyone

PERCENT NOT ALWAYS ABLE TO GET CARE



Source: AAMC Consumer Survey of Health Care Access Wave 2-19

AAMC Consumer Survey of Health Care Access

<https://www.aamc.org/what-we-do/mission-areas/patient-care/workforce-studies/resources/>

WORKFORCE

Workforce Resources

SHARE: [f](#) [t](#) [in](#) [v](#)

AAMC Consumer Survey of Health Care Access

Twice each year, the AAMC fields a Consumer Survey of Health Care Access to assess access to health care services in the United States. Emphasizing a consumer perspective, the AAMC Consumer Survey complements our ongoing research on the physician workforce. Significantly, the AAMC Consumer Survey takes an inclusive approach to defining access, beginning with whether care is received, and examining the roles of health insurance coverage, having a usual source of care, the timeliness and location of care, and the quality of patient-provider communications on access to care.

[DOWNLOAD THE DATA HIGHLIGHTS](#)

For more information about the data that are available for analyses, please refer to the AAMC Consumer Survey of Health Care Access below:

- [AAMC Consumer Survey of Health Care Access Topic Areas \(PDF\)](#)
- [AAMC Consumer Survey of Health Care Access Data Dictionary \(PDF\)](#)
- [AAMC Consumer Survey of Health Care Access Codebook \(PDF\)](#)

AAMC Consumer Survey of Health Care Access

- Applications will be reviewed by a **team of eight representatives** from various AAMC work units.
- Some proposal criteria will be used to triage and filter applications prior to formal review process.
 - Does application meet all requirements?
 - Is there a clear health/health care equity focus?

Review Criteria & Process

- Key criteria to focus on are **clarity**, **feasibility**, and **alignment** with the Call for Research's health equity focus.
 - Can the proposed study be accomplished within the indicated timeline, and with the available data?
 - Is there potential to generate new knowledge?
 - Can the proposed research be accomplished by the proposed team/person?

Review Criteria & Process

- Selected applicants will be given access to the applicable data for **12 months**, at no cost
 - Awardees will be required to sign a **Data Use Agreement (DUA)** with the AAMC before they are given access to the data
 - Data access will be given for 12 months, and studies **must be completed within this timeframe**.
- **Travel award is contingent**
 - Once studies are **completed** and **summary findings** are submitted to the AAMC, the AAMC will consider supporting the researcher(s) to present their findings via other platforms, such as webinars or AAMC conferences

Awards



Key Dates & Deadlines

QUESTIONS?

Q & A

- For more information, visit our websites:

www.aamc.org/healthequity

www.aamc.org/charge

- For questions, and/or to join AAMC CHARGE, email:

healthequityresearch@aamc.org

THANK YOU!