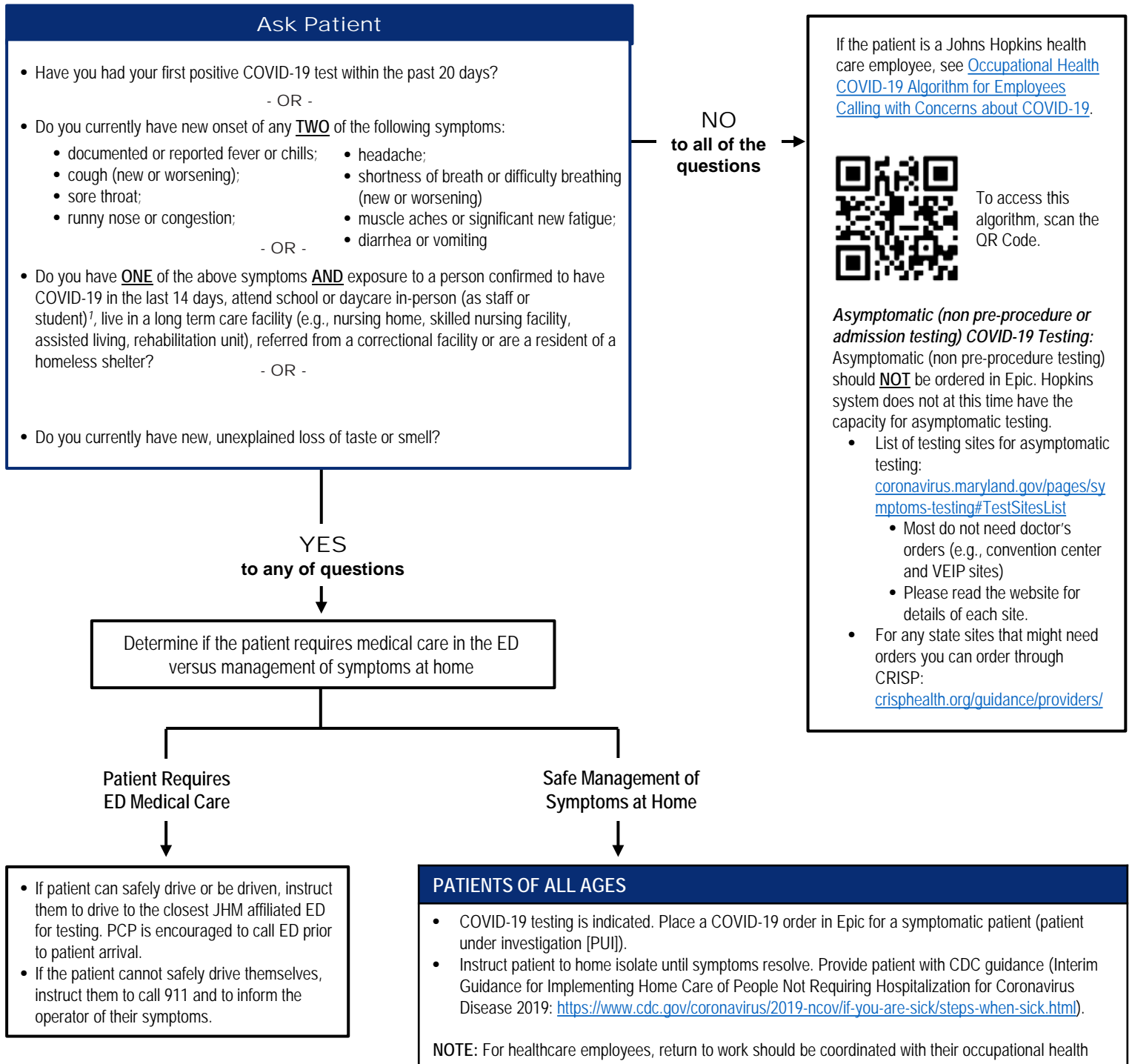


COVID-19 Testing Algorithm for Pediatric and Adult Ambulatory Clinics

Testing algorithm based current COVID-19 testing availability. Use clinical judgement.

Last Updated November 17, 2020 at 2:40 PM EST



1. Testing of symptomatic patients attending school is supported even if they do not meet other JHM PUI screening criteria. https://intranet.insidehopkinsmedicine.org/heic/docs/2019-nCoV_phone_triage.pdf

Johns Hopkins Medicine Healthcare Epidemiology and Infection Control

© The Johns Hopkins University, The Johns Hopkins Hospital, and Johns Hopkins Health System. All rights reserved.

