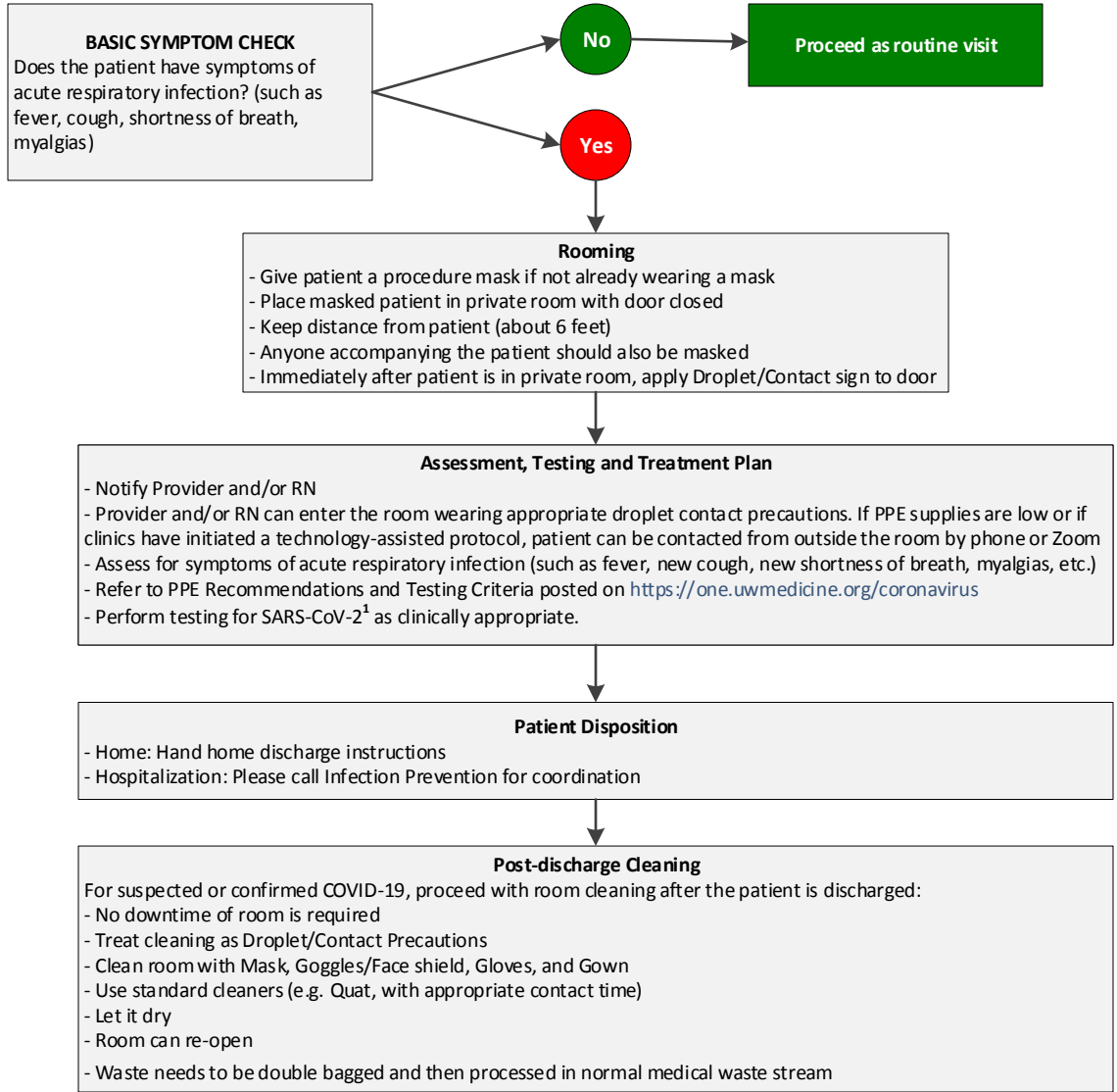


COVID-19 Workflow for Ambulatory Settings



¹**SARS-CoV-2 sample collection:** Nasopharyngeal swabs often generate a strong cough reflex. Standard/Contact/Droplet precautions are recommended. For additional instructions, please refer to the [UW Laboratory Test Guide](#)

Infection Prevention Teams:
UWMC – ML/CCL (206) 598-6190
UWMC-NW (206) 668-1705
HMC (206) 744-3000