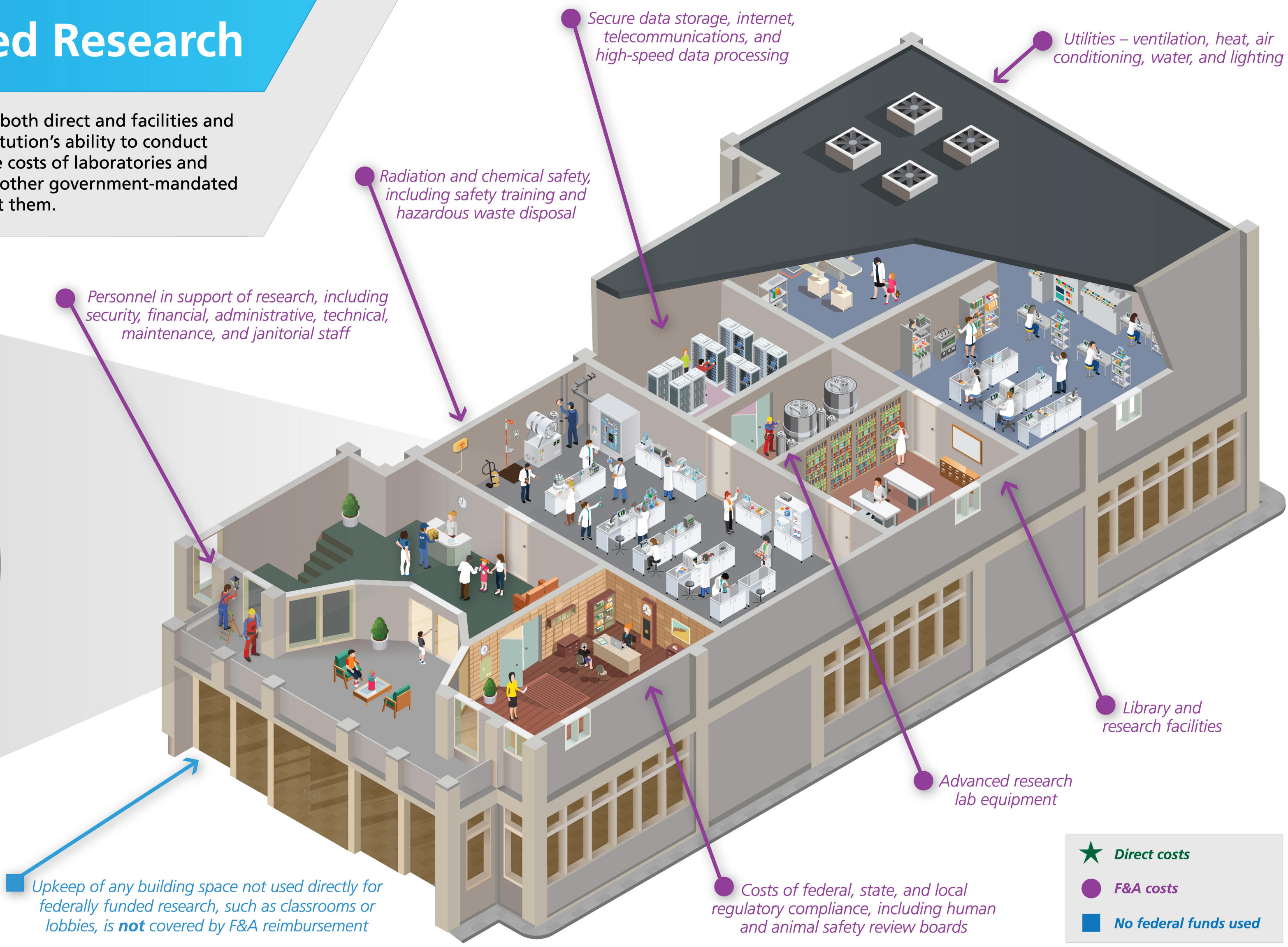


# Costs of Federally Sponsored Research

The total cost of federally sponsored research includes a combination of both direct and facilities and administrative (F&A) costs. Both types of expenditures are key to an institution's ability to conduct cutting-edge research. F&A consists of the construction and maintenance costs of laboratories and high-tech facilities; energy and utility expenses; and safety, security, and other government-mandated expenses. These costs are real and research cannot be conducted without them.



★ *Direct costs* - These expenses solely cover research and include lab supplies and equipment; salaries and stipends for researchers and graduate students; and travel costs for conducting and sharing research



- ★ *Direct costs*
- *F&A costs*
- *No federal funds used*