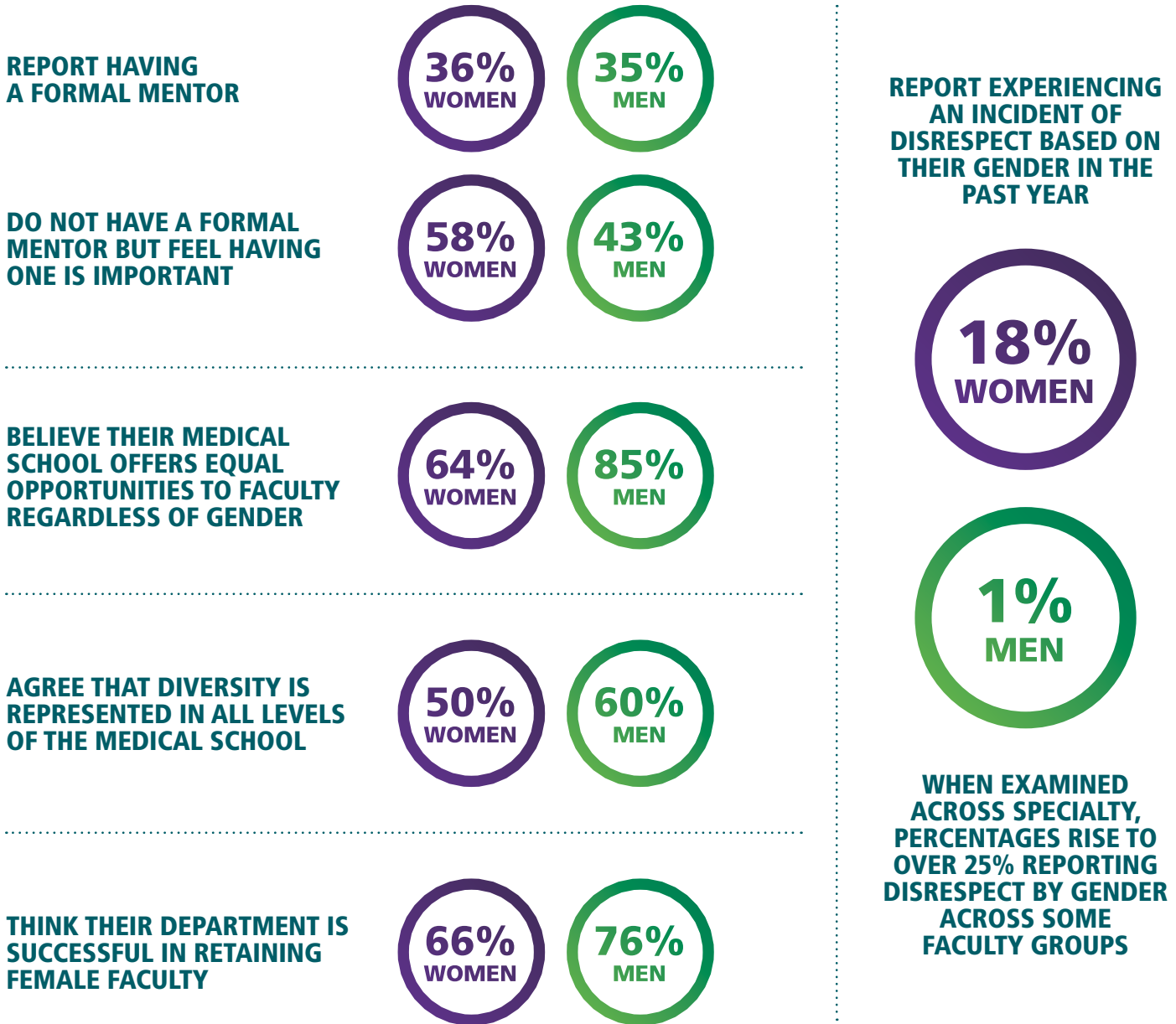


FIGURE 5:

WORKPLACE ENGAGEMENT AND CULTURE



KEY TAKEAWAY

A smaller percentage of women faculty than men faculty perceived that there were equitable opportunities for all faculty regardless of gender at their medical schools.

▲ Source: Data are from the AAMC StandPoint Faculty Engagement Survey collected between August 2015 and August 2018 across 29 institutions and representing 20,123 faculty respondents.