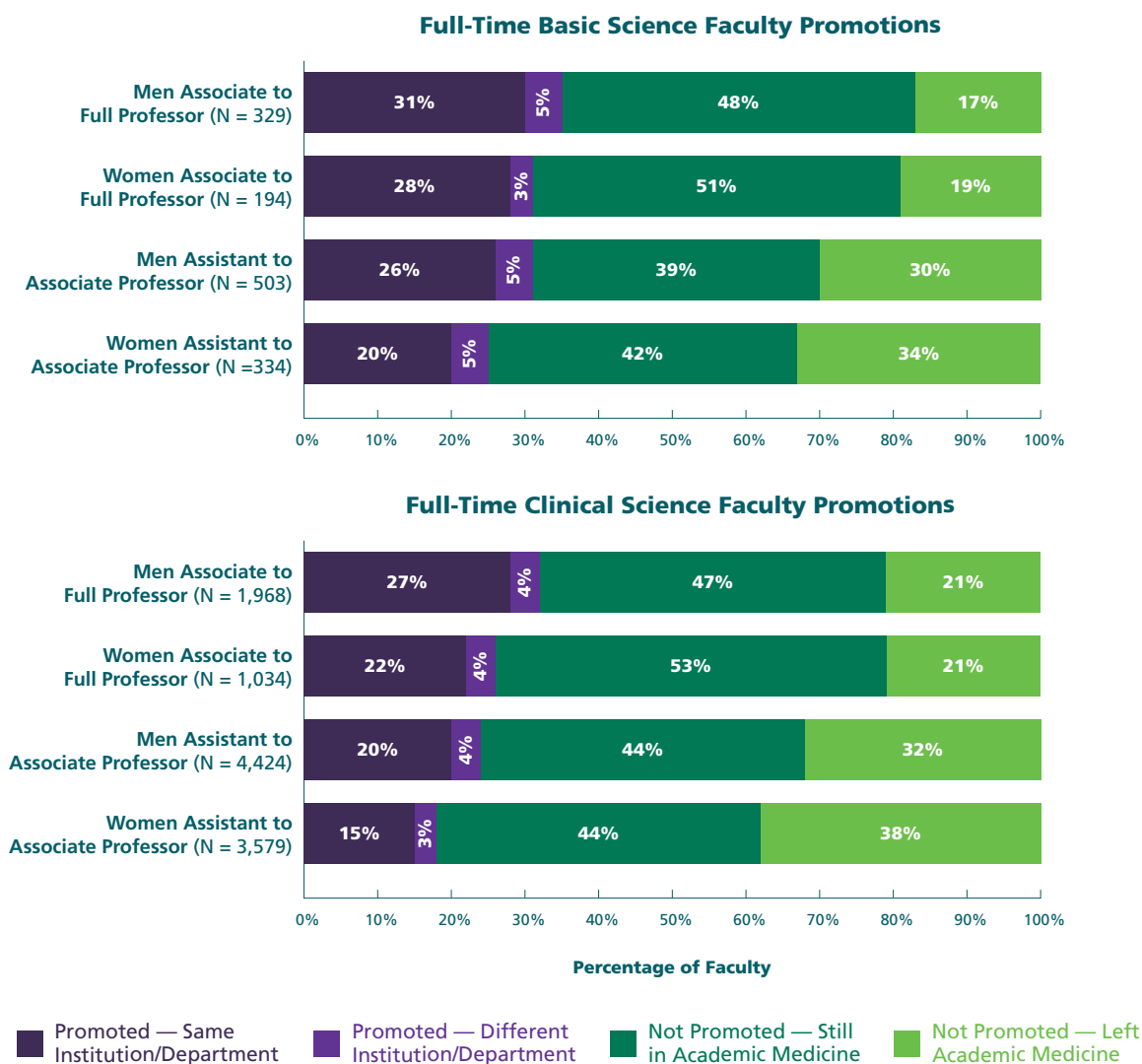


FIGURE 4: SEVEN-YEAR PROMOTION OUTCOMES FOR FULL-TIME FIRST-TIME ASSISTANT PROFESSORS AND FIRST-TIME ASSOCIATE PROFESSORS IN ACADEMIC YEAR 2008-2009



KEY TAKEAWAY

The percentage of full-time women faculty who advanced in rank during a seven-year period was smaller than that for men during the same period.

■ Source: Dec. 31, 2018, snapshot of the AAMC Faculty Roster.
 Note: Each full-time faculty member whose initial assistant professor appointment or initial associate professor appointment began at any point from July 1, 2008, through June 30, 2009, was tracked for seven years to determine promotion outcomes. The total number of faculty in each initial cohort is in parentheses above. Percentages may not sum to 100% due to rounding.