

How Do Teaching Hospitals Serve America's Communities?

Known for their role in educating medical students and residents, physicians and staff at AAMC-member teaching hospitals* also provide a full range of patient care services, including intensive, specialized services at the cutting edge of medical innovation, and extend a vital safety net to millions of the nation's most vulnerable patients by providing care regardless of one's ability to pay.

Providing Patient Care

Comprising **only 6 percent of all hospitals**, AAMC-member teaching hospitals and their faculty physicians account for 20 percent or more of all hospital care in this country and receive more than 40 percent of all transferred patients whose illnesses or injuries require a sophisticated level of technology and expertise not available at a community hospital.

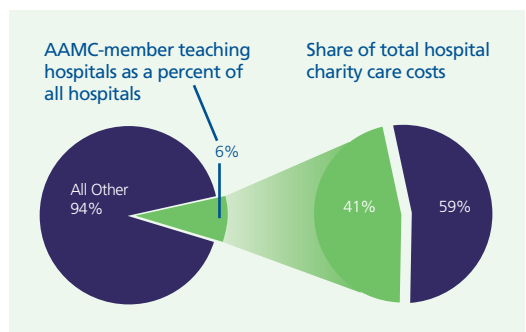
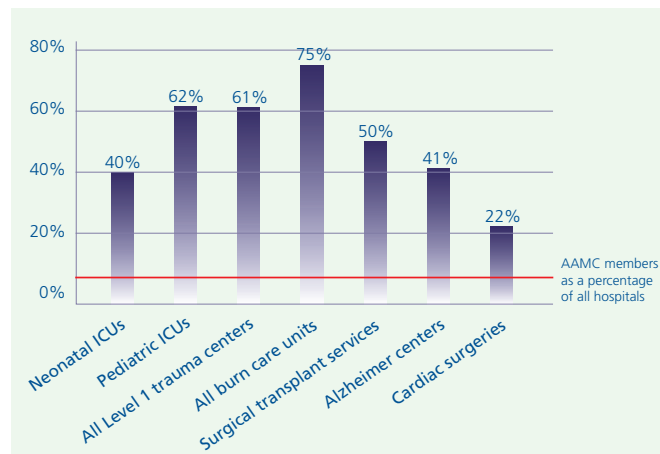
Offering Intensive and Specialized Services

The disparity is even more dramatic when considering intensive and critical services, with AAMC-member teaching hospitals operating:

- 40 percent of neonatal ICUs;
- 62 percent of pediatric ICUs;
- 61 percent of all Level 1 regional trauma centers; and
- 75 percent of all burn care units.

These institutions also provide a disproportionate share of care to patients who are severely ill or have rare conditions, including:

- 50 percent of the surgical transplant services;
- 41 percent of Alzheimer centers; and
- 22 percent of all cardiac surgery services.



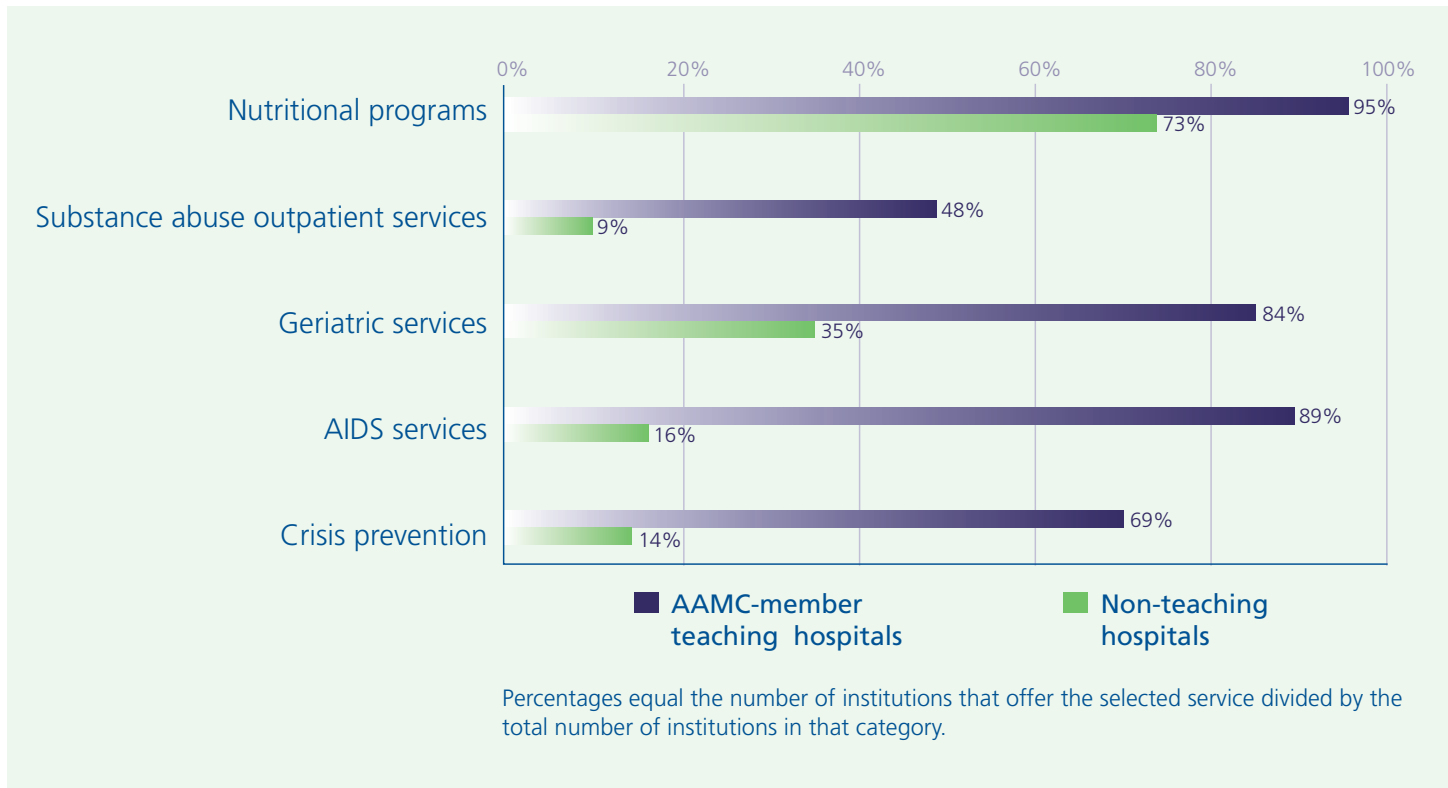
Extending a Safety Net to the Medically Underserved

The majority of AAMC-member teaching hospitals are located in urban regions, many of which are in inner-city areas with high poverty rates. As a result, a substantial percentage of the 46 million Americans who lack health insurance and the 48 million children, adults, seniors, and disabled Americans covered by Medicaid programs turn to them for medical care. At just 6 percent of all hospitals, these institutions:

- provide 41 percent of all hospital charity care, and
- are the sites for approximately 25 percent of all Medicaid hospitalizations.

Operating Community Programs

AAMC-member teaching hospitals are more likely than nonteaching hospitals to reach out to the communities they serve by offering various community programs. For example, 89 percent of AAMC-member teaching hospitals offer AIDS services compared to 16 percent of nonteaching hospitals.



In summary, faculty physicians and staff at AAMC-member teaching hospitals provide the full range of patient care to those in need—from routine hospital services to critical procedures and treatments—and all to a degree greatly disproportionate to their numbers.

*AAMC-member teaching hospitals are members of the Council of Teaching Hospitals and Health Systems (COTH). Typically, each COTH member sponsors, or participates significantly in, at least four approved, active residency programs—at least two of which should be in medicine, surgery, obstetrics/gynecology, pediatrics, family practice, or psychiatry.