



Tomorrow's Doctors, Tomorrow's Cures

Learn

Serve

Lead

Physician Shortages Post Health Care Reform

Atul Grover, MD, PhD, FACP, FCCP



Association of
American Medical Colleges

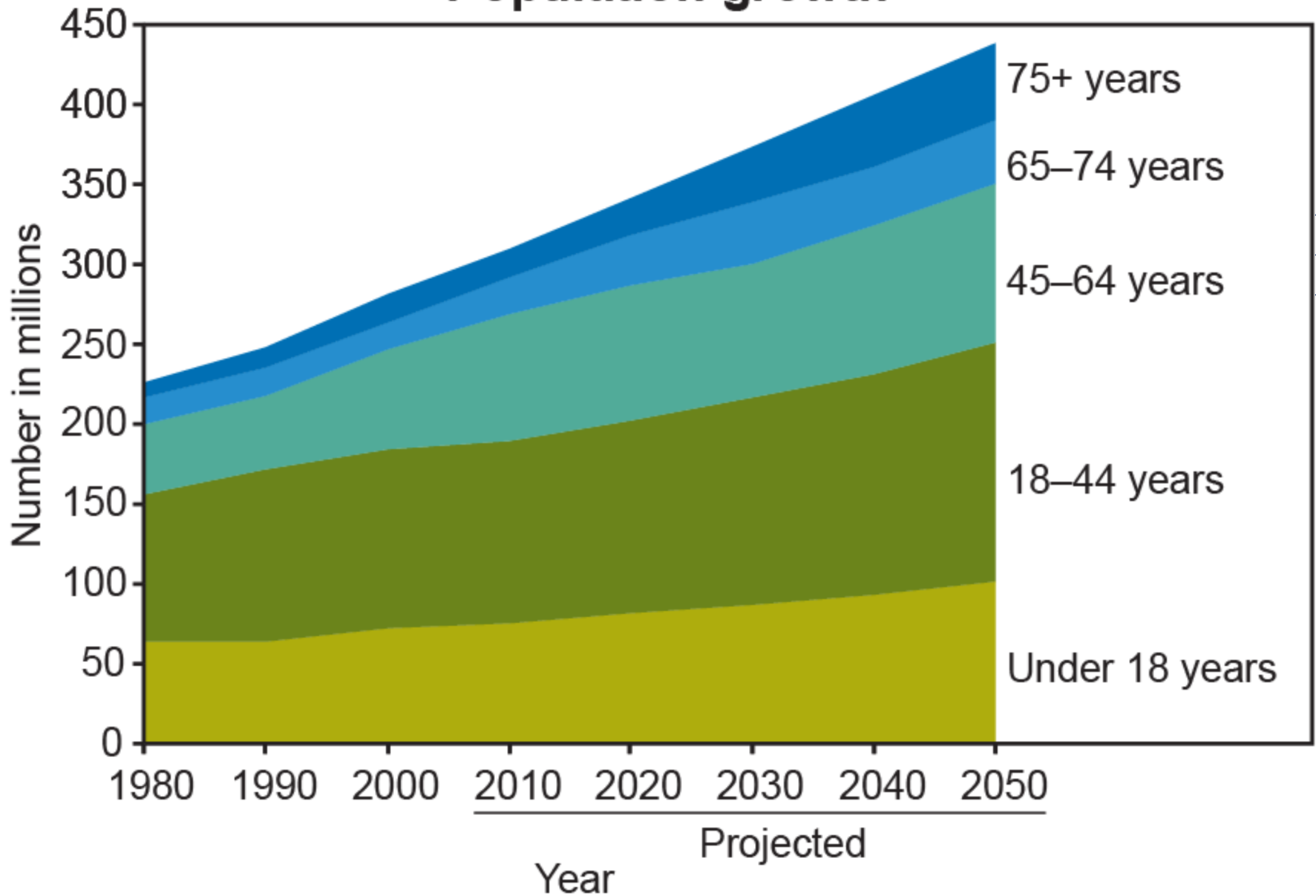
Impact of Reform on Workforce

- Resident redistribution: adds **~300 primary care doctors & general surgeons per year** (3,000 /10 years)
- HHS workforce grants: adds **500+ primary care doctors** over 10 years
- **32 million into system**, many without prior insurance with pent up needs
- Over next 20 years, **36 million people added to Medicare** (use the most services) ~ 20% of the population (up from 13%)

Why a Physician Shortage?

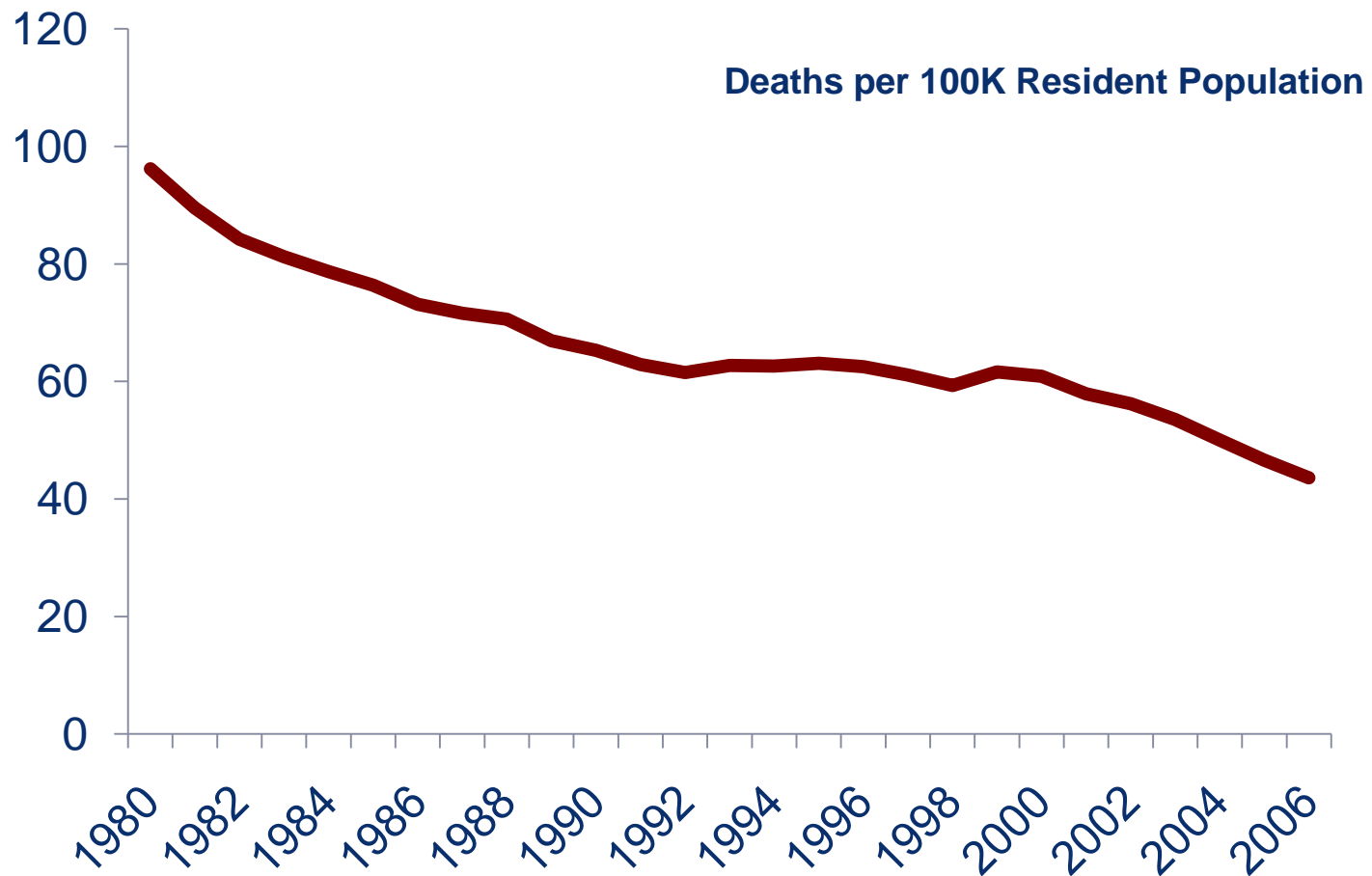
- The number of physicians per capita will decrease in next decade if we don't train more
- The population is growing larger—the number of elderly will double
- Medicine is keeping more people alive longer and they are living quality lives—with more illnesses
- The elderly have greater health care needs, particularly specialty care
- Even the best prevention will not eliminate disease but, rather, delay it

Population growth



SOURCE: CDC/NCHS, *Health, United States, 2009*, Figure 1A. Data from the U.S. Census Bureau.

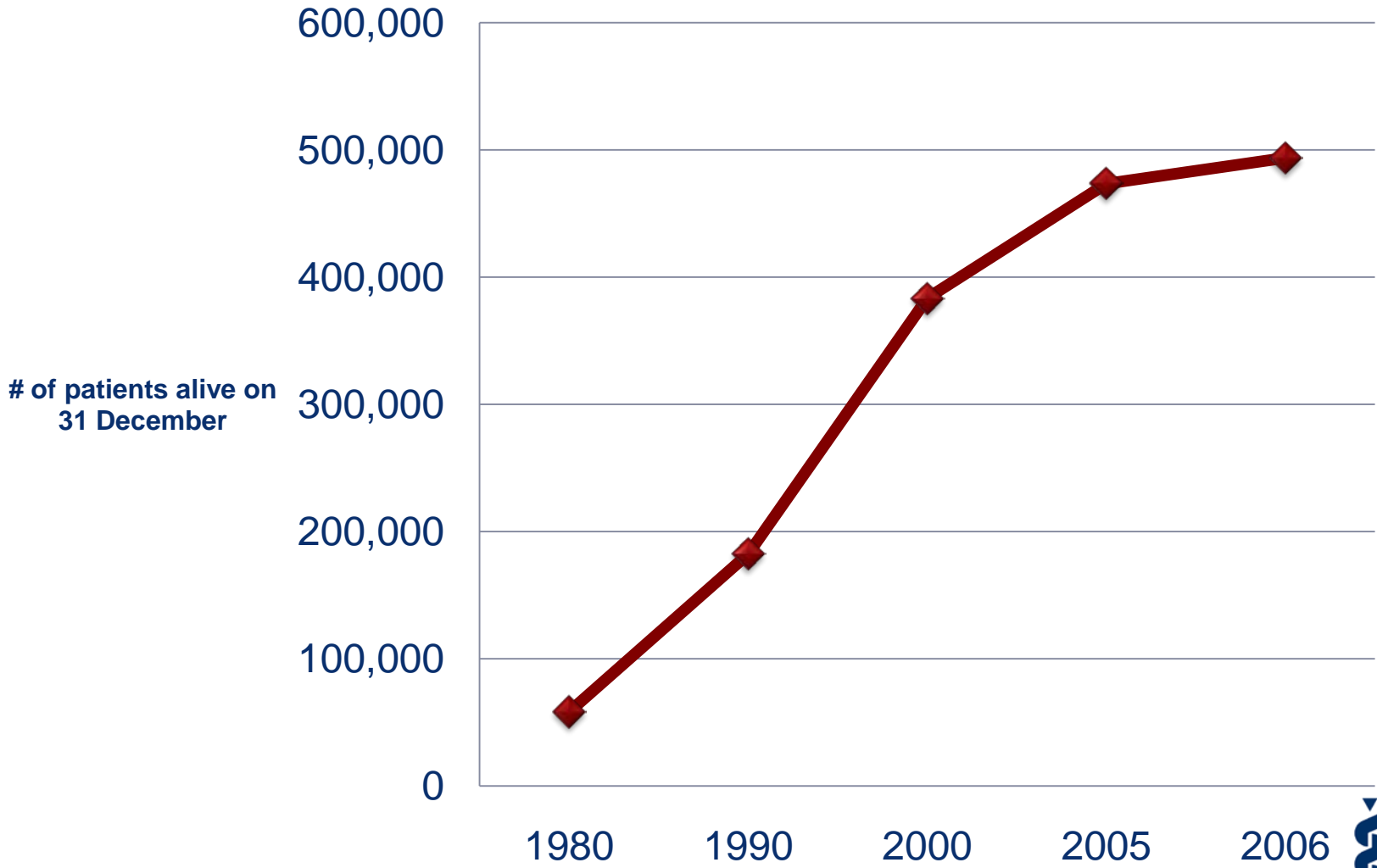
Cerebrovascular Death Rates Decrease as Treatments Advance



Source: *Health, United States, 2009* – CDC <http://www.cdc.gov/nchs/hus.htm>

Patients Are Living Longer With Disease

Prevalence of End-Stage Renal Disease

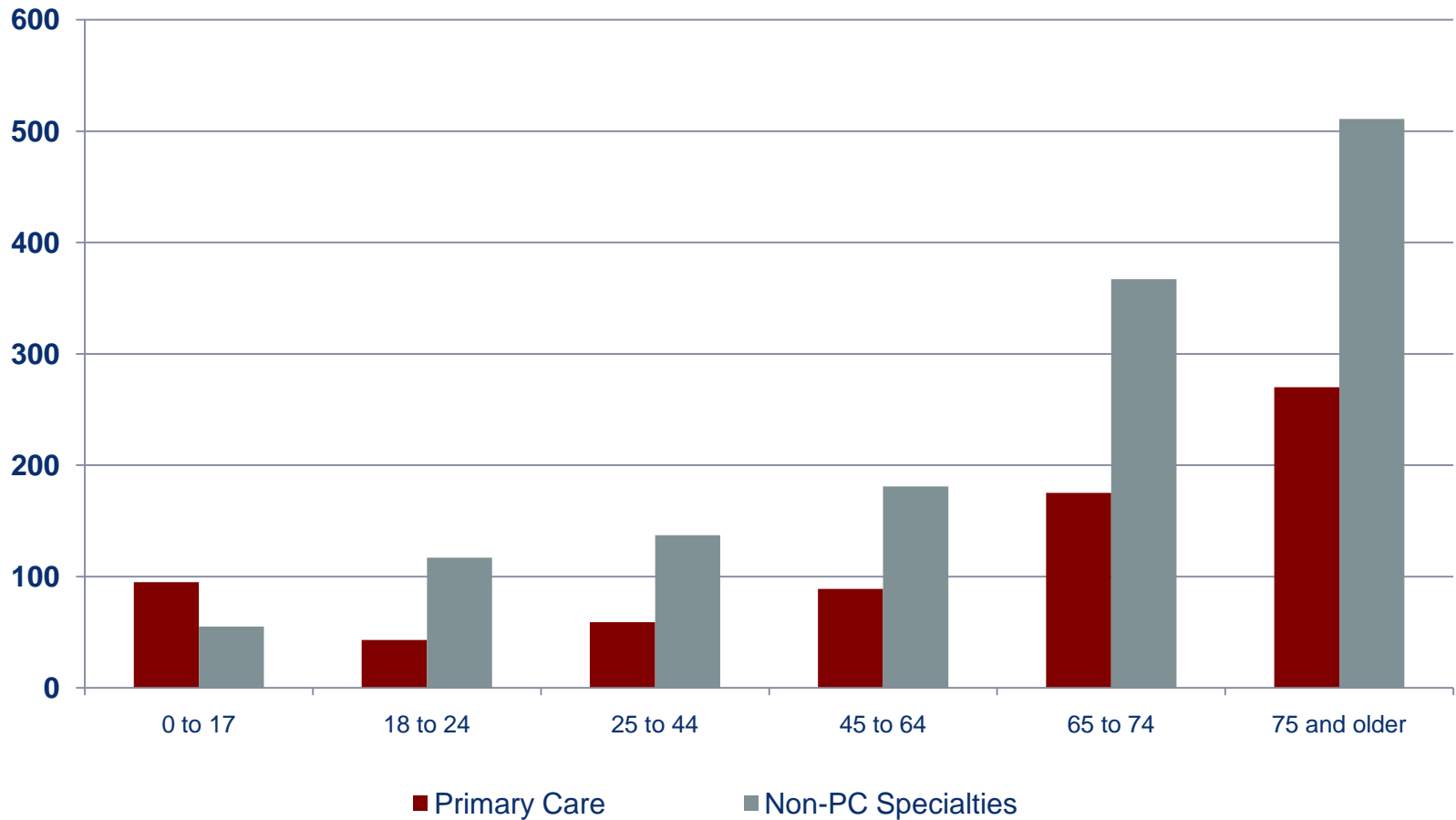


Source: *Health, United States, 2009* – CDC <http://www.cdc.gov/nchs/hus.htm>



Medicare Beneficiaries Depend Upon Specialty Care

Physicians required per 100,000 Population by Patient Age



HHS/HRSA *The Physician Workforce: Projections and Research into Current Issues*



Agencies warn of coming doctor shortage

Uneven distributions, in disciplines and locations, could strain the healthcare system. Can it be stopped?

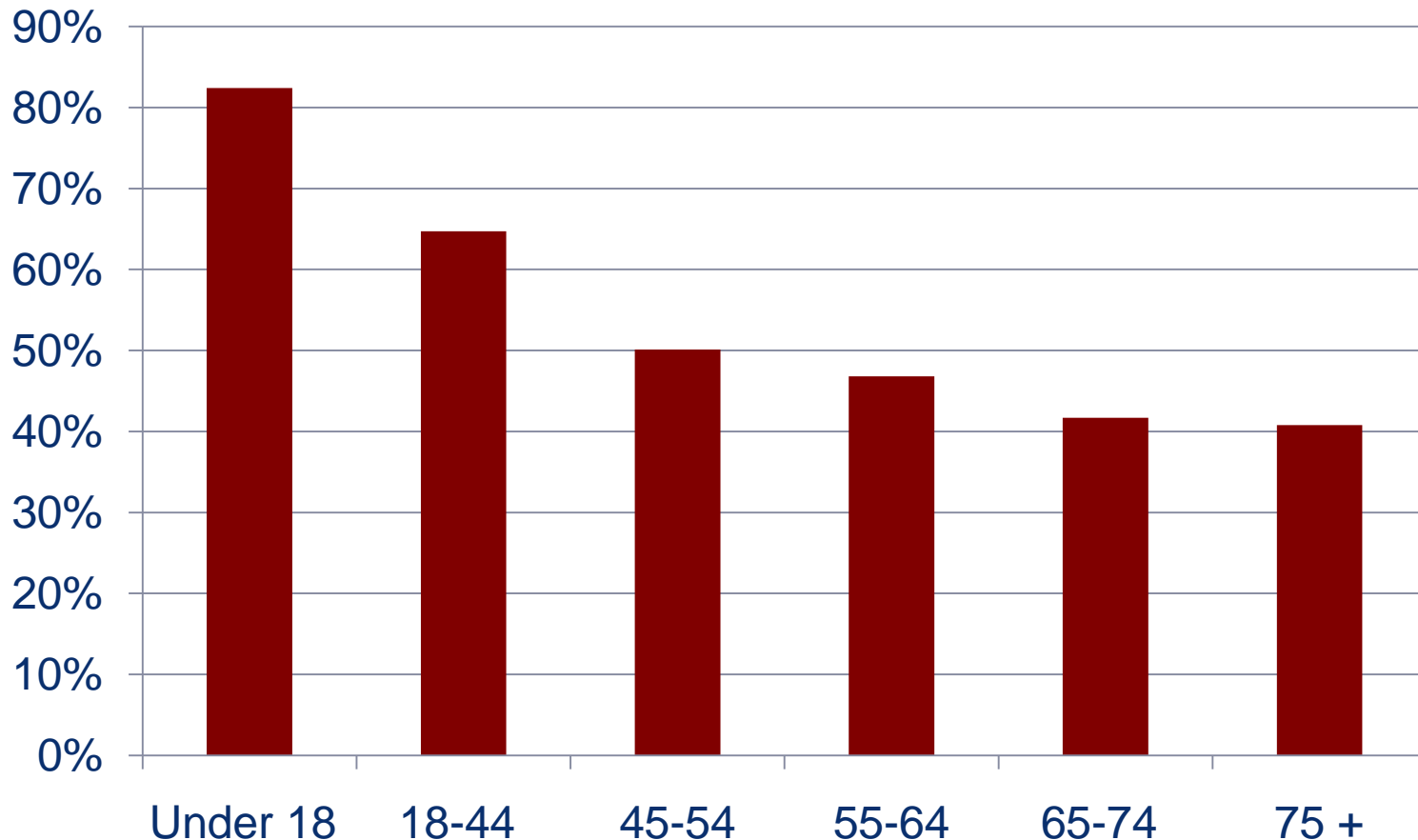
June 07, 2010 | By Tammy Worth, Special to the Los Angeles Times

Stories of emergency rooms pushed to capacity and wait times at physicians' offices have become legendary. Now the passage of healthcare reform — potentially funneling 30 million new people into an already-packed system — has some groups warning that the nation will soon see a shortage of doctors.

The Assn. of American Medical Colleges has warned of a deficiency of up to 125,000 doctors by 2025. And it isn't the only group voicing concerns. The Health Resources and Services Administration, a federal agency that works to improve healthcare access for the uninsured, has projected that the supply of primary-care physicians will be inadequate through 2020, at which point there will be a deficit of 65,560 physicians. The American Academy of Family Physicians estimates the need for almost 145,000 extra doctors by that year.

Primary Care as a Proportion of Visits Decreases as Patients Age

Percentage of Visits to Primary Care Physician by Age
2007



Source: *Health, United States, 2009* – CDC <http://www.cdc.gov/nchs/hus.htm>

How Many More Physicians?

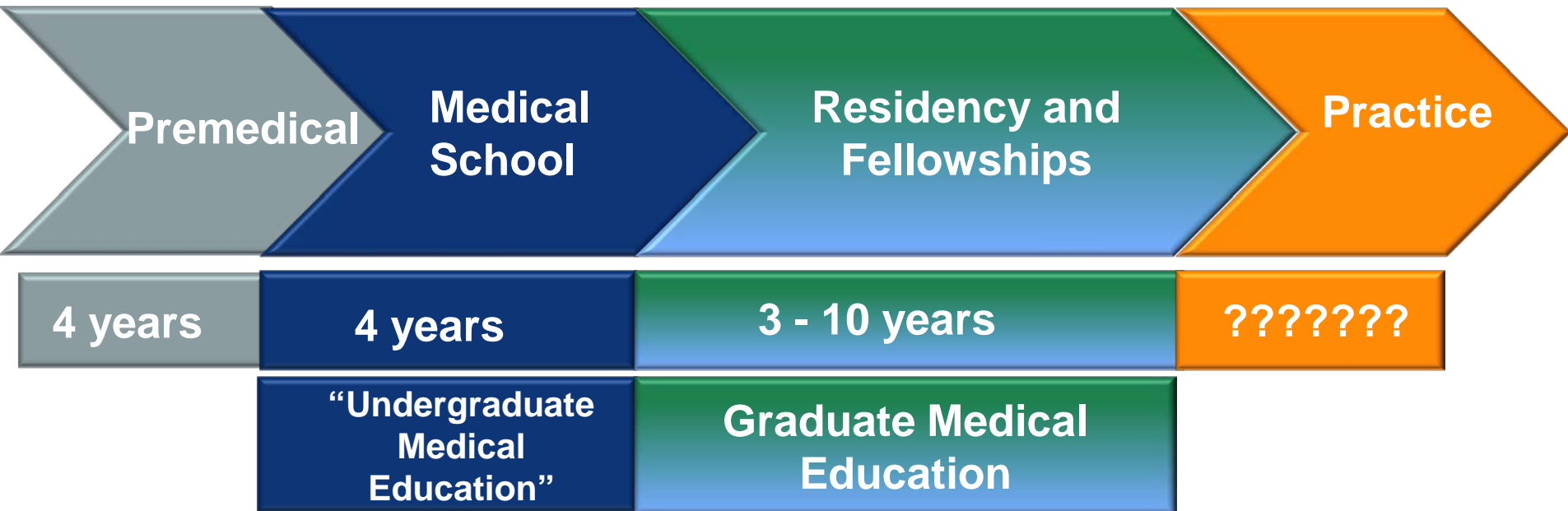
Projected Supply and Demand, Full-time Equivalent Physicians Active in Patient Care Post Health Care Reform, 2008-2025

Year	Physician Supply (All Specialties)	Physician Demand (All Specialties)	Physician Shortage (All Specialties*)	Physician Shortage (Non-Primary Care Specialties)
2008	699,100	706,500	7,400	None
2010	709,700	723,400	13,700	4,700
2015	735,600	798,500	62,900	33,100
2020	759,800	851,300	91,500	46,100
2025	785,400	916,000	130,600	64,800

Source: AAMC Center for Workforce Studies, June 2010 Analysis

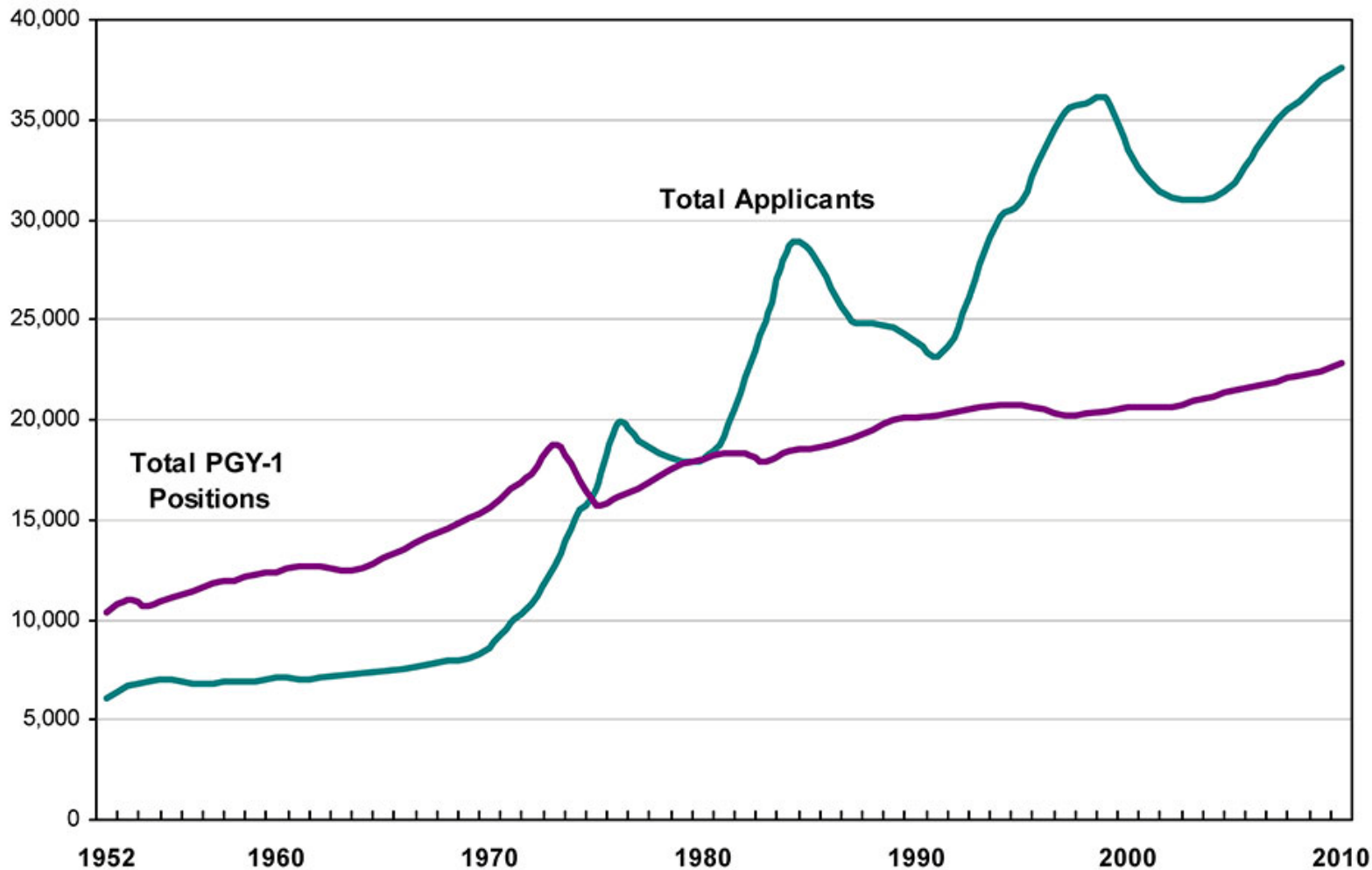
*Total includes primary care, surgical, and medical specialties.

The Education Continuum



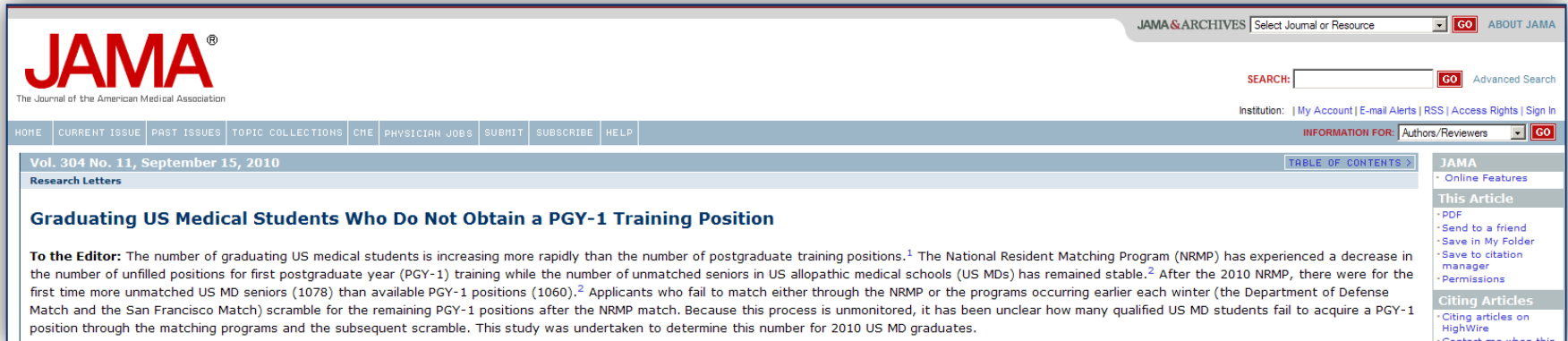
Residency Positions vs Applicants

Figure 1 Applicants and 1st Year Positions in the Match, 1952 - 2010



Are We on Track?

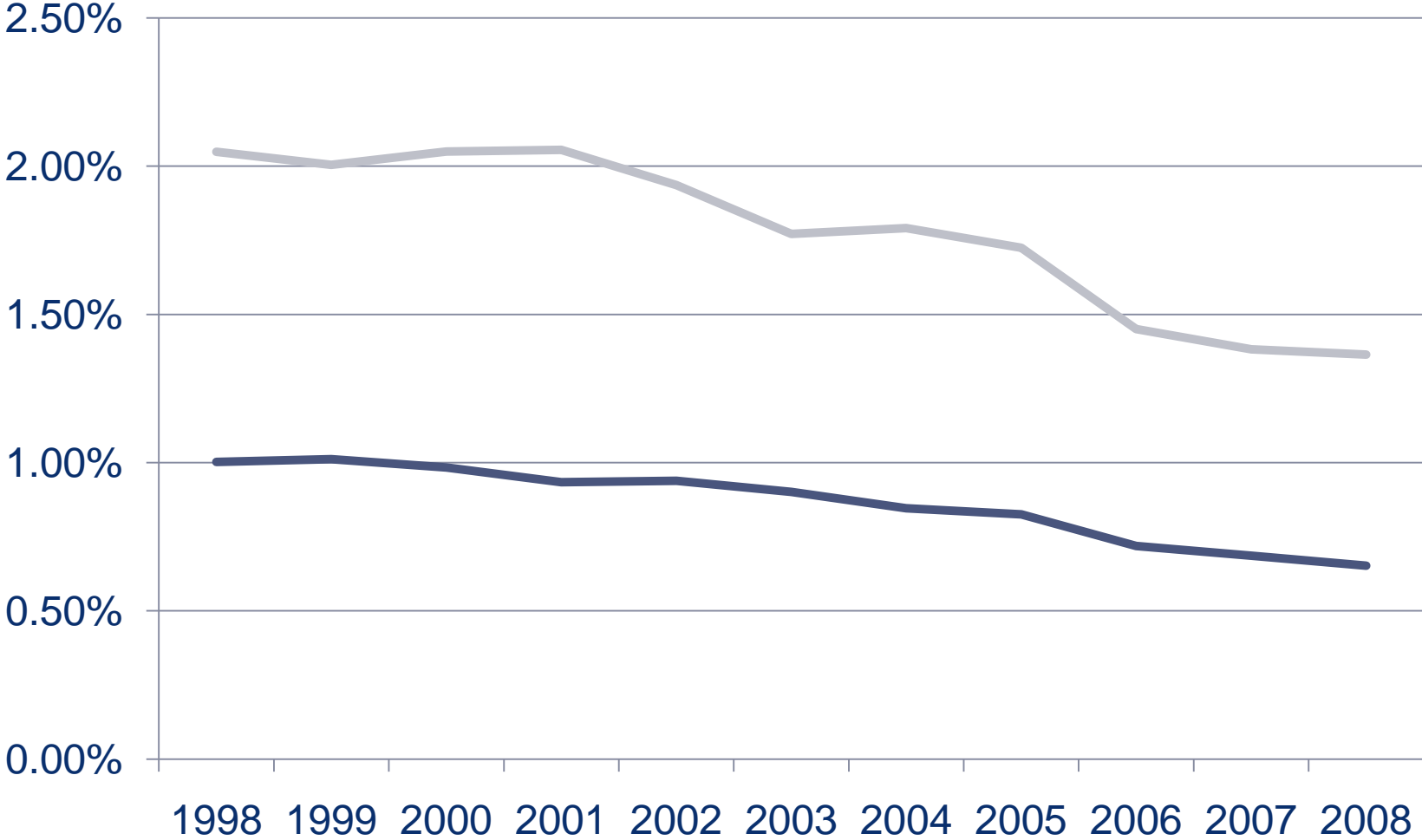
- Medicare has frozen support for its share of costs of residency training at 1996 levels
- 25,000 docs/yr finish training...but the number of retirements will soon exceed new entrants



The screenshot shows the JAMA website interface. At the top left is the JAMA logo with the tagline 'The Journal of the American Medical Association'. To the right is a search bar and navigation links. Below the logo is a horizontal menu with options like 'HOME', 'CURRENT ISSUE', 'PAST ISSUES', etc. The main content area displays the article title 'Graduating US Medical Students Who Do Not Obtain a PGY-1 Training Position' under the heading 'Research Letters'. The article text begins with 'To the Editor: The number of graduating US medical students is increasing more rapidly than the number of postgraduate training positions...'.

- Med schools will expand enrollment by 30% over 2002 levels, but we won't produce a single extra physician without expanding residencies
- Training another 40,000 physicians in 10 yrs (1/2 of need) requires 15% expansion of GME

Medicare's Investment in GME



— DGME as a % of Medicare — IME as a % of Medicare



Where do we go from here?

- Make most efficient use of all health professionals, working in teams
- Medical school expansion is underway
- Congress must lift the freeze on Medicare's support of GME positions by at least 15% to allow for the training of additional physicians



Tomorrow's Doctors, Tomorrow's Cures



Learn

Serve

Lead

Association of
American Medical Colleges