

Northern Ontario School of Medicine

Recruitment Facilitators

- rural upbringing
- positive undergraduate rural clinical experiences
- targeted postgraduate training for rural practice

www.norimed.ca

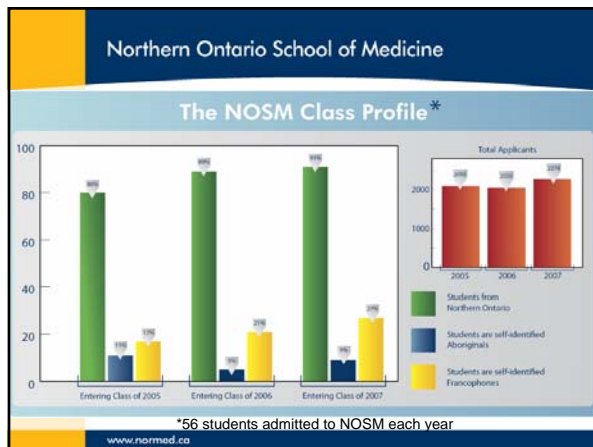
Northern Ontario School of Medicine

Admissions

Selection criteria target northern students:

- Background living in northern urban, rural and/or remote communities
- Admissions process eliminates many barriers for northern students

www.norimed.ca



Northern Ontario School of Medicine

NOSM MD Program

- Four years
- Clinically driven
- Holistic cohesive curriculum
- Distributed learning
- Consultative process in developing curriculum

www.norimed.ca

Northern Ontario School of Medicine

Organization / Delivery of NOSM Curriculum

Phase 1		Phase 2	Phase 3	Residency
Year 1	Year 2	Year 3	Year 4	Years 5, 6 and Beyond
101	107	Comprehensive Community Clerkship	Clerkship & Electives	Individual Specialty Choice
102	108			
103	109			
104	110			
105	111		Licensure Examination	
106				

Case Based Modules

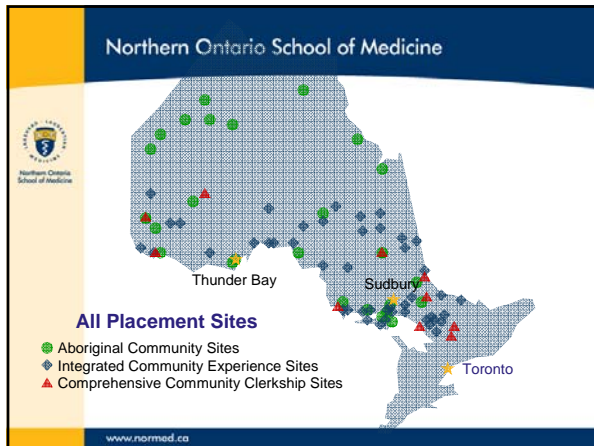
www.norimed.ca

Northern Ontario School of Medicine

Distributed Community Engaged Learning

An instructional model that allows widely distributed human and instructional resources to be utilized independent of time and place in community partner locations across the North

www.norimed.ca



- Northern Ontario School of Medicine
- ## Challenges for NOSM
- confidence
 - accreditation
 - resources
 - start up
 - physician engagement
- www.normed.ca

- Northern Ontario School of Medicine
- ## Impact of NOSM
- more skilled doctors
 - enhanced health care
 - improved health outcomes
 - broader academic developments
 - economic developments
- www.normed.ca

