



Findings from the AAMC MD/PhD Program Directors Survey

Di Fang, Ph.D.

Division of Biomedical and Health Sciences
Research, AAMC



Purposes of the Survey

- To improve the quality of the AAMC MD/PhD data
- To assess the attrition from MD/PhD programs



MD/PhD Programs Participation

- 100 MD/PhD programs surveyed
- 91% completed the survey
- 3% completed half of the survey (1990-99)
- 4% completed less than half of the survey

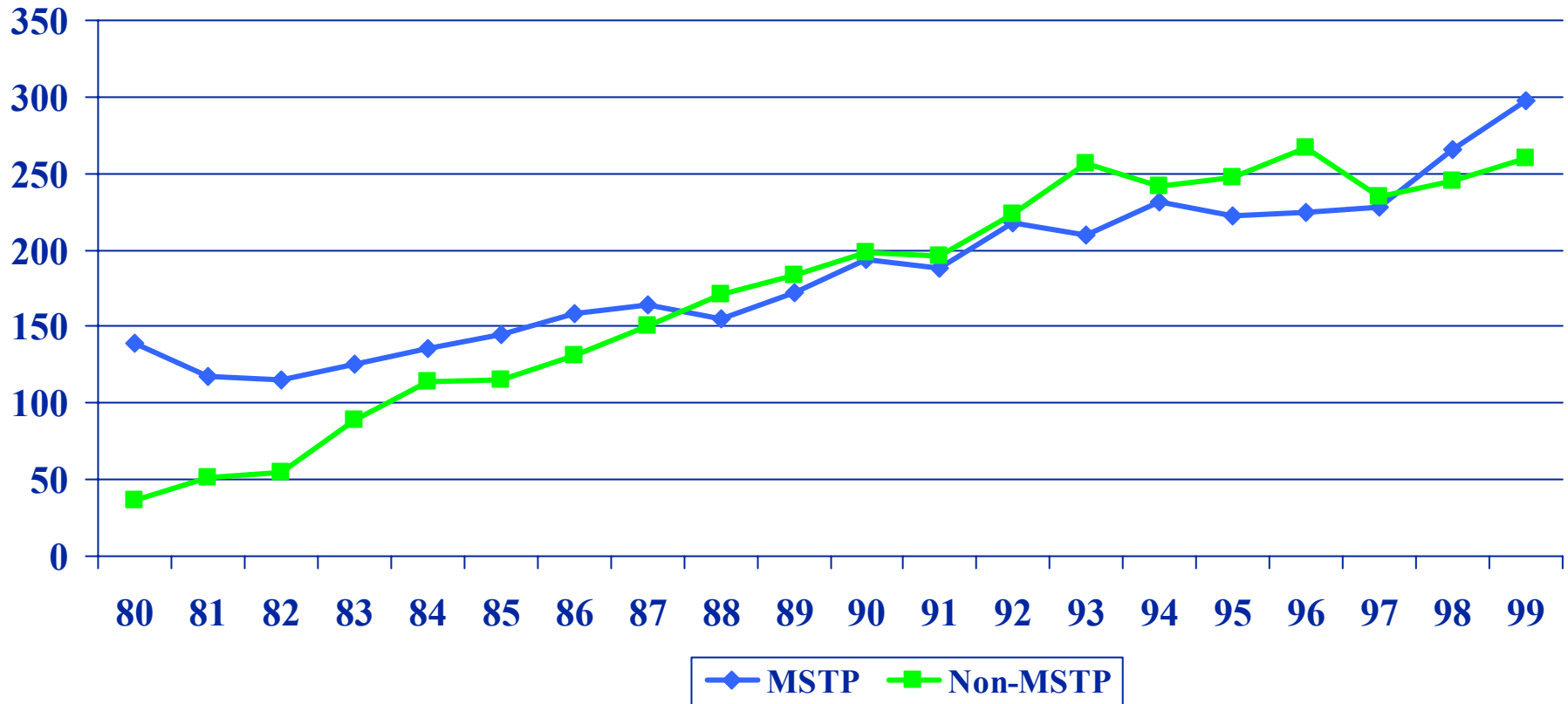


MSTP MD/PhD Programs Participation

- 39 MSTP program surveyed.
- 34 (87%) completed the survey
- 3 (8%) completed half of the survey (1990- 99)
- 2 (5%) completed less than half of the survey

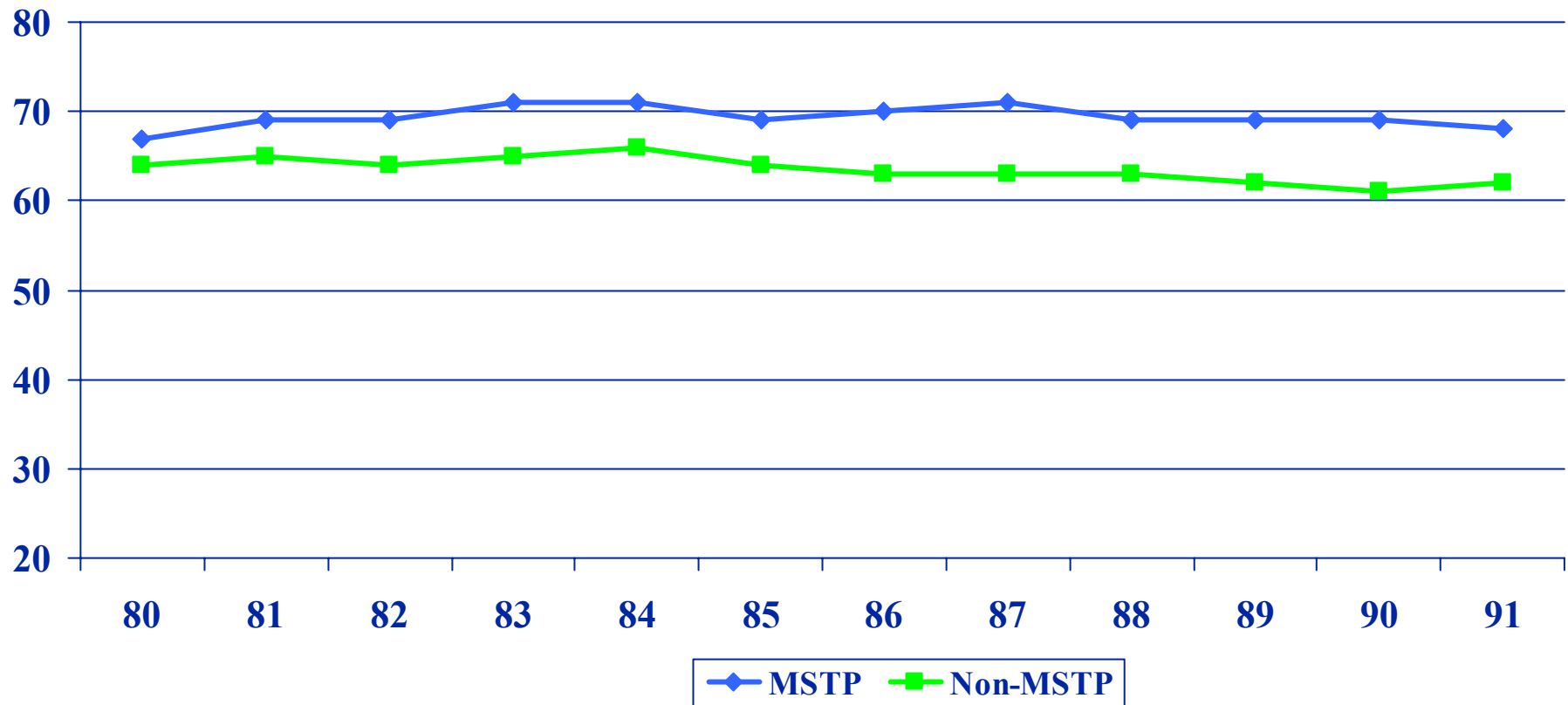


1. Number of MD/PhD Students by Matriculation Year



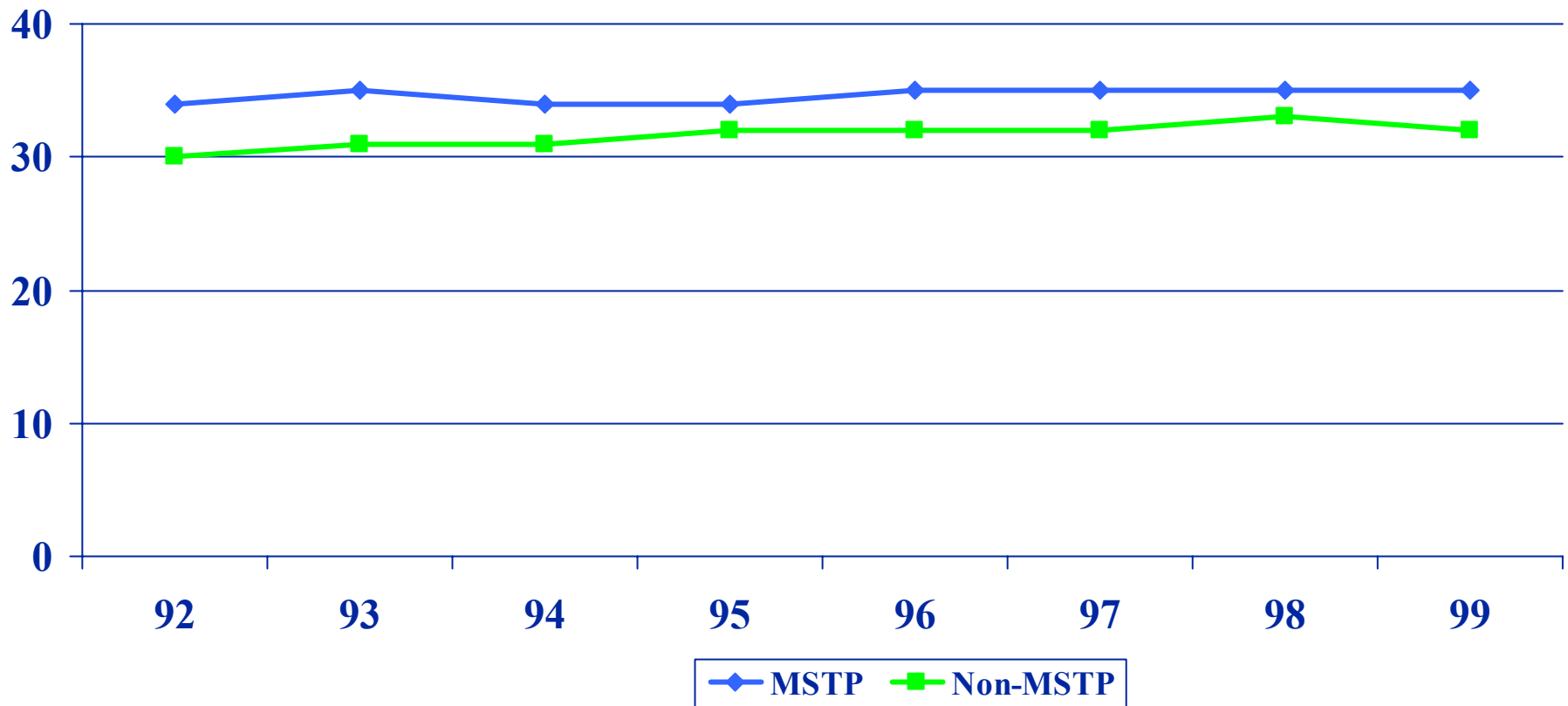


2. Mean Value of Total 6 MCAT Scores of MD/PhD Students by Matriculation Year 1980-91 Matriculating Cohorts



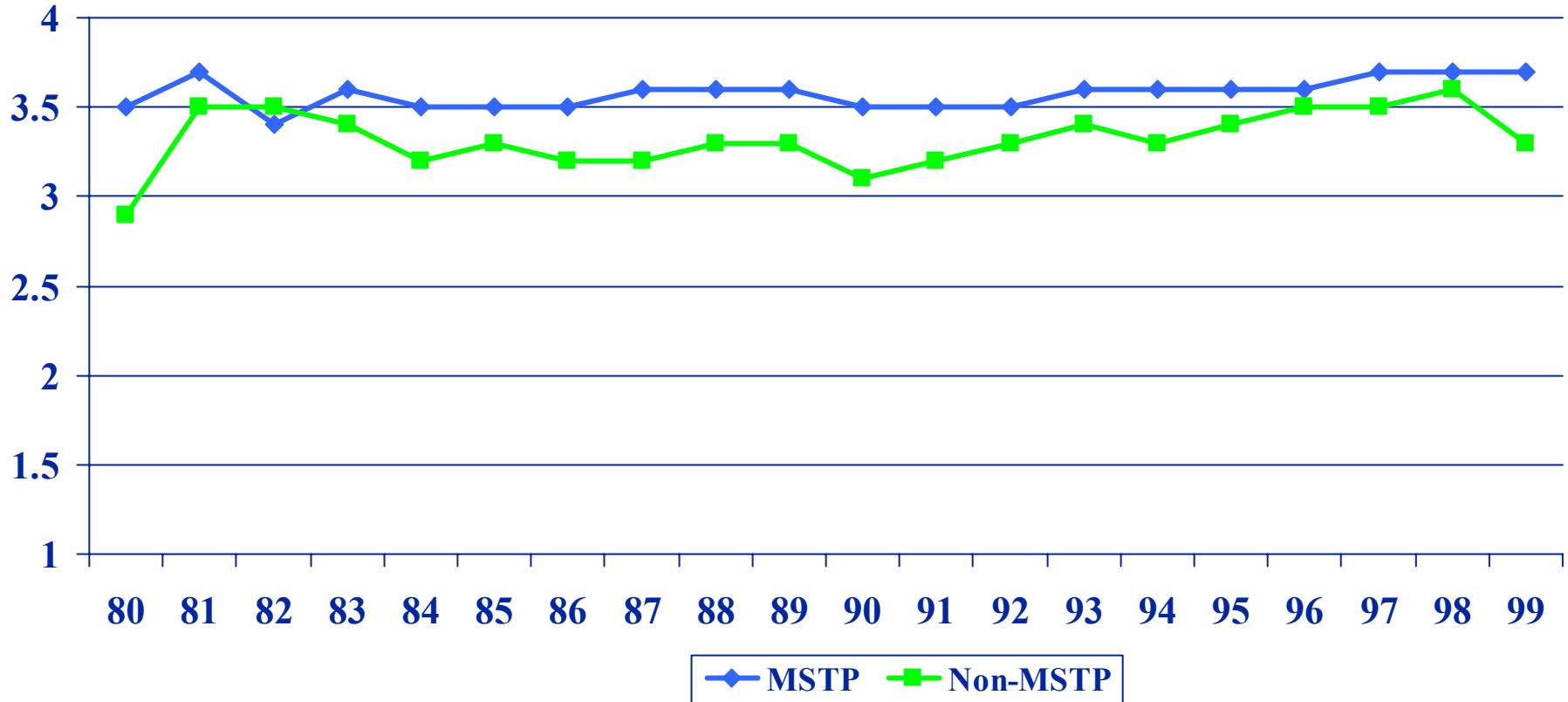


3. Mean Value of Total 3 MCAT Scores of MD/PhD Students by Matriculation Year 1992-99 Matriculating Cohorts



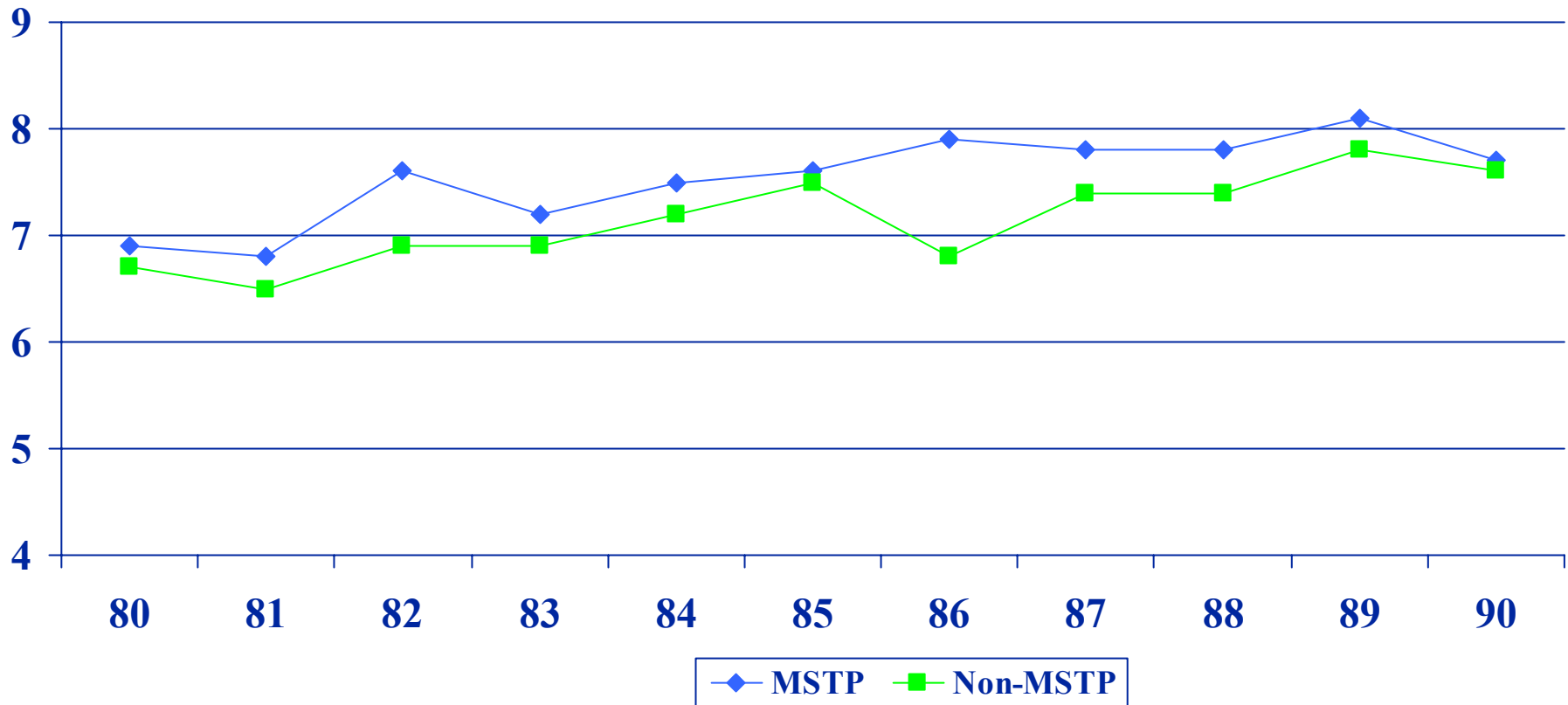


4. Mean GPA Score of MD/PhD Students by Matriculation Year



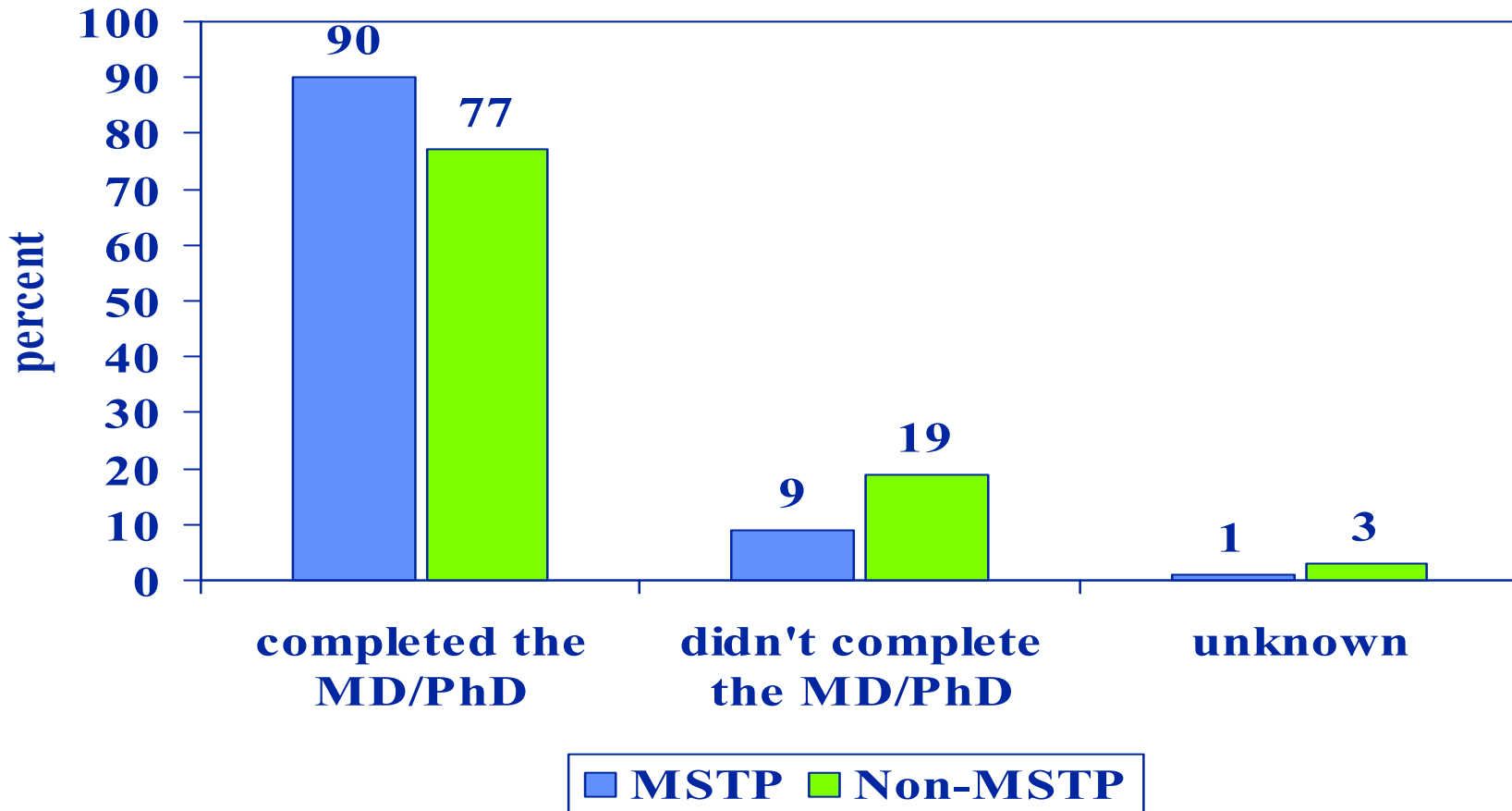


5. Average Years of MD/PhD Education 1980-90 Matriculating Cohorts Who Completed the MD/PhD



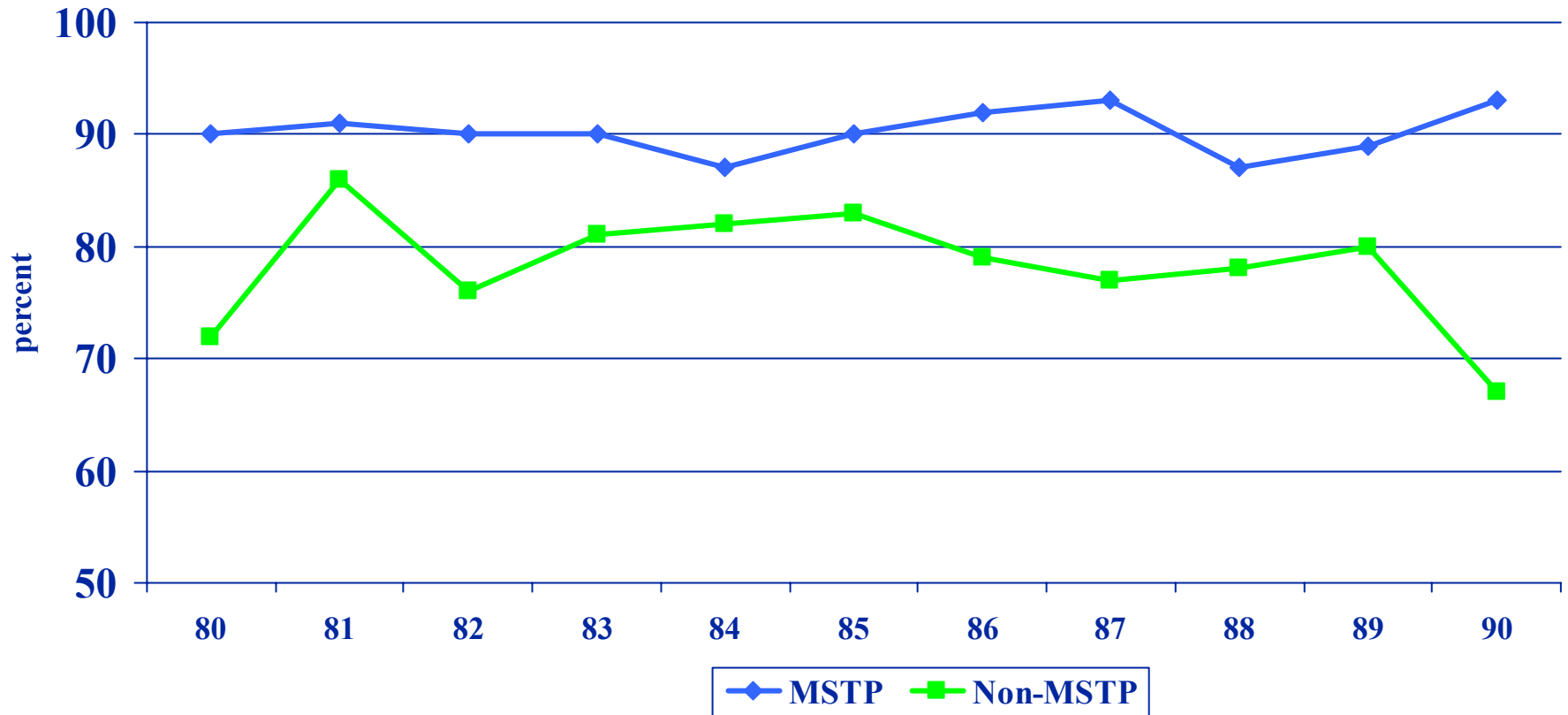


6. Status of MD/PhD Students 1980-90 Matriculating Cohorts



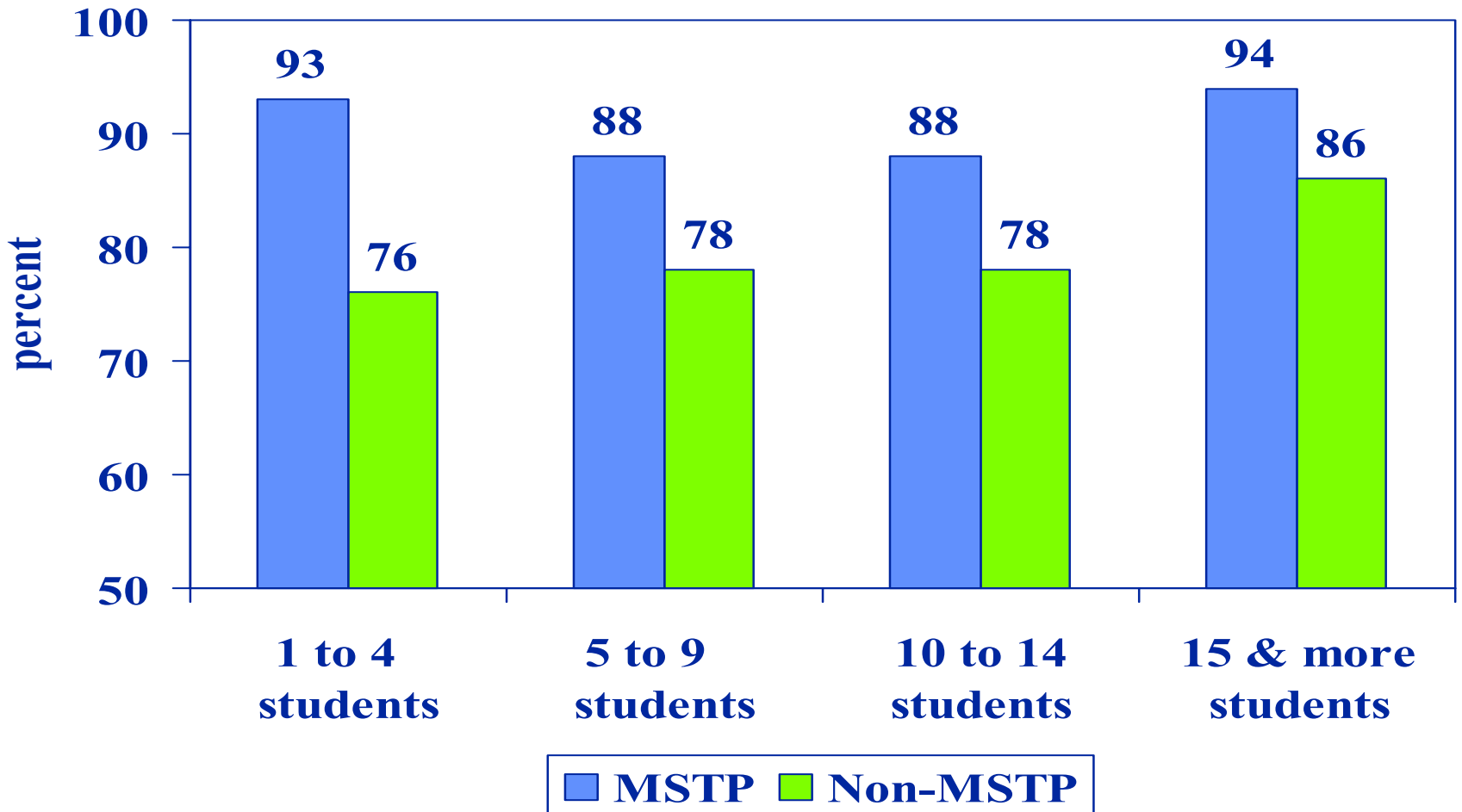


7. Percent of MD/PhD Students Who Completed the MD/PhD by Matriculation Year 1980-90 Matriculating Cohorts



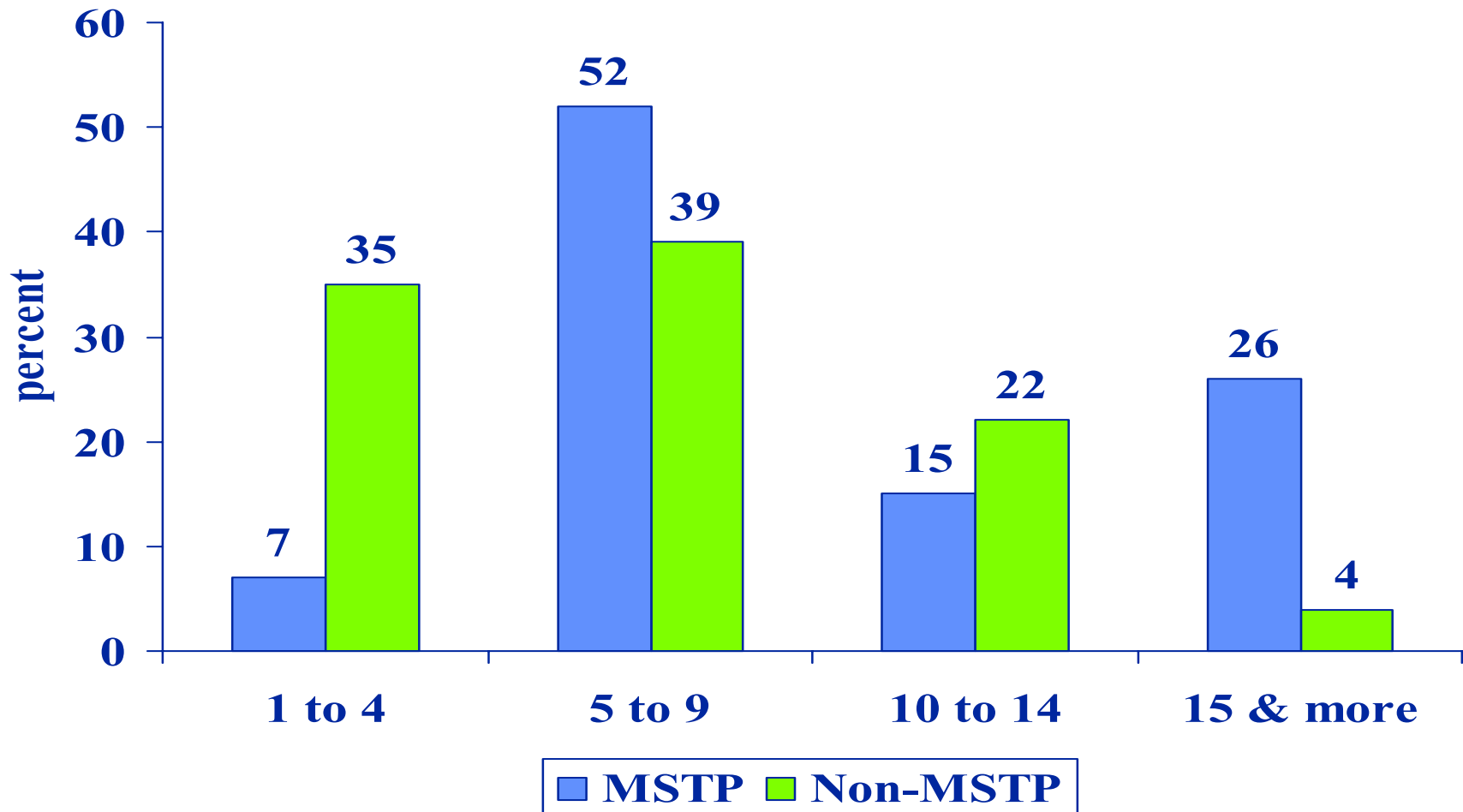


8. Percent of MD/PhD Students Who completed the MD/PhD by Program Size in 1990 1980-90 Matriculating Cohorts





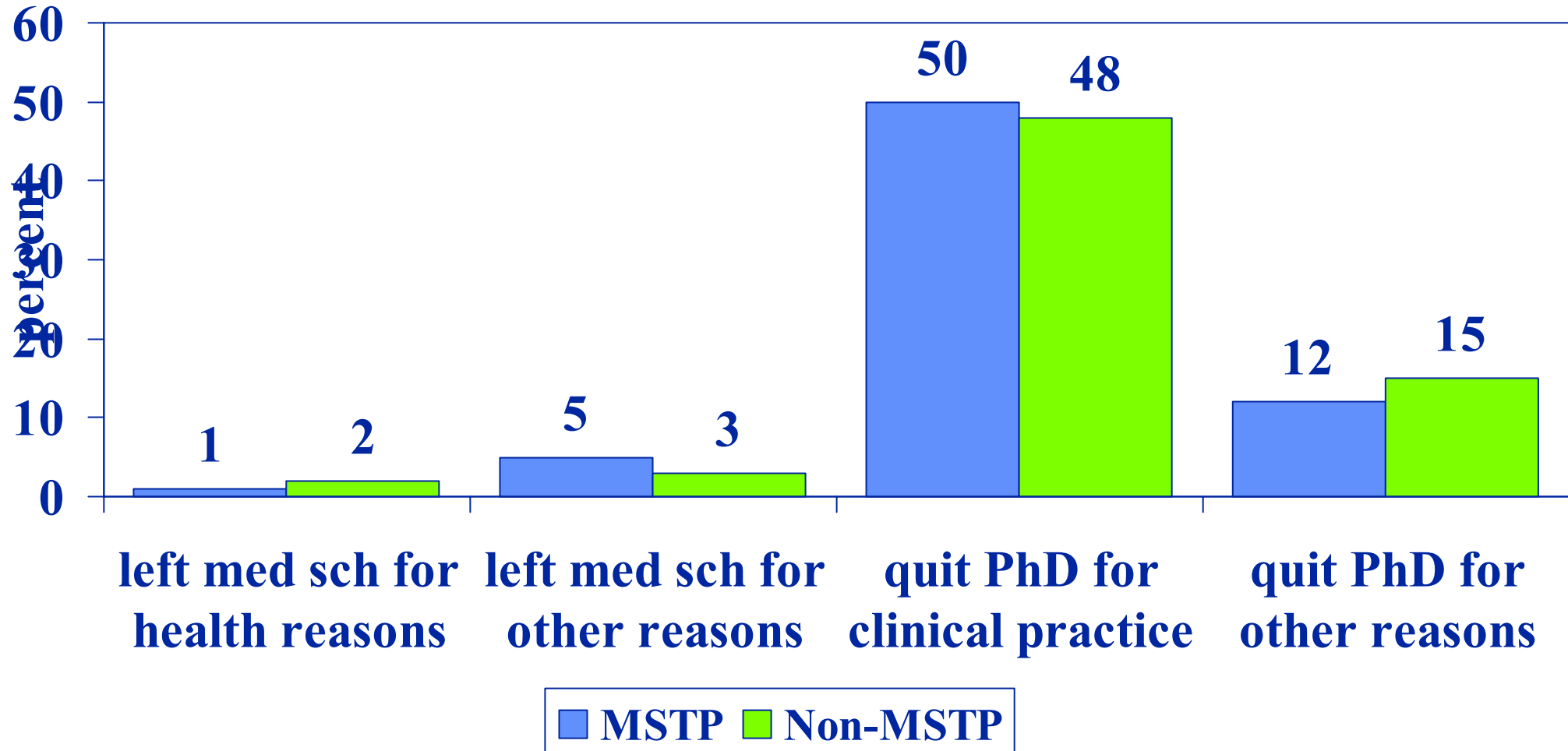
9. Distribution of MD/PhD Students by Program Size in 1990 1980-90 Matriculating Cohorts





10. Reasons for Not Completing the MD/PhD (Part 1)

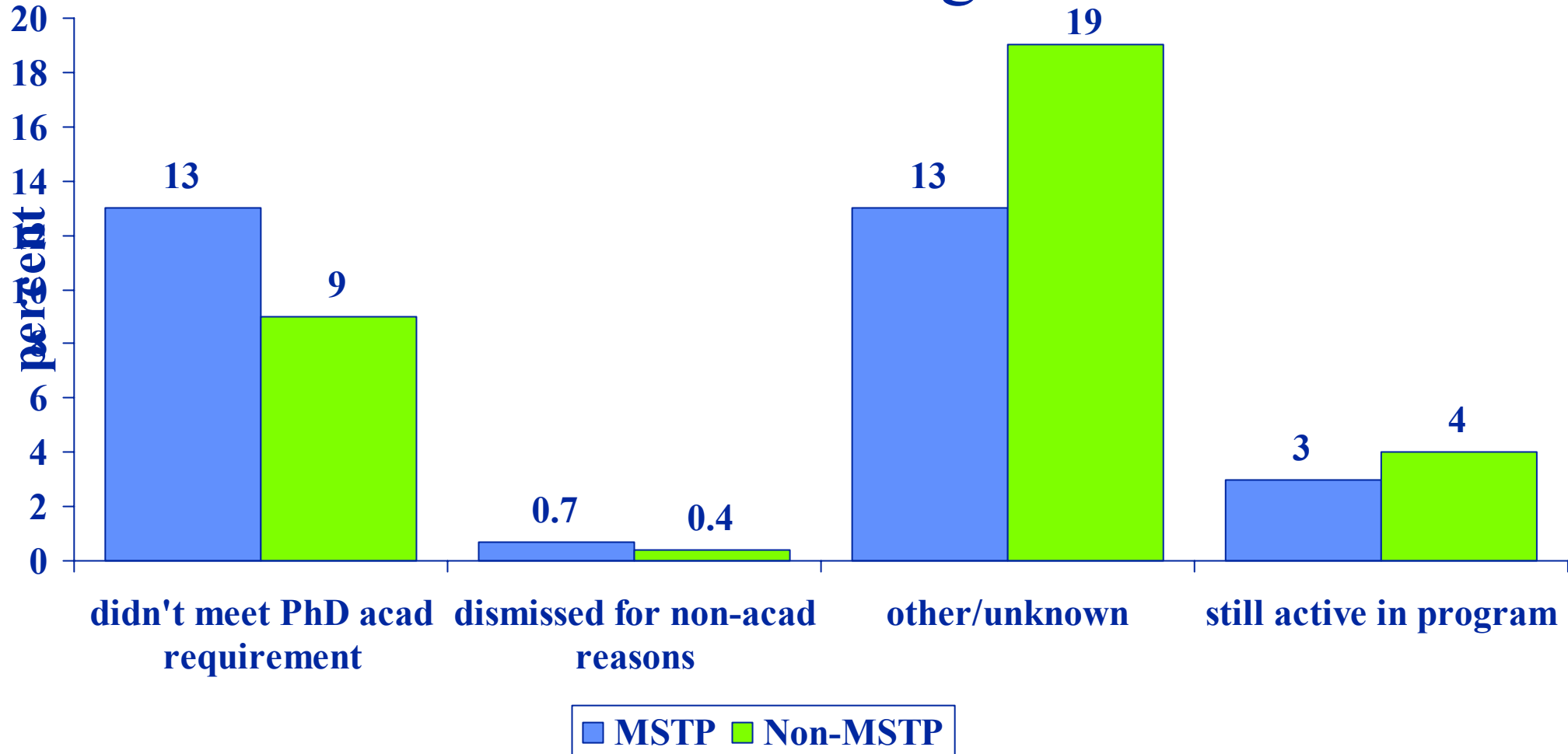
1980-90 Matriculating Cohorts





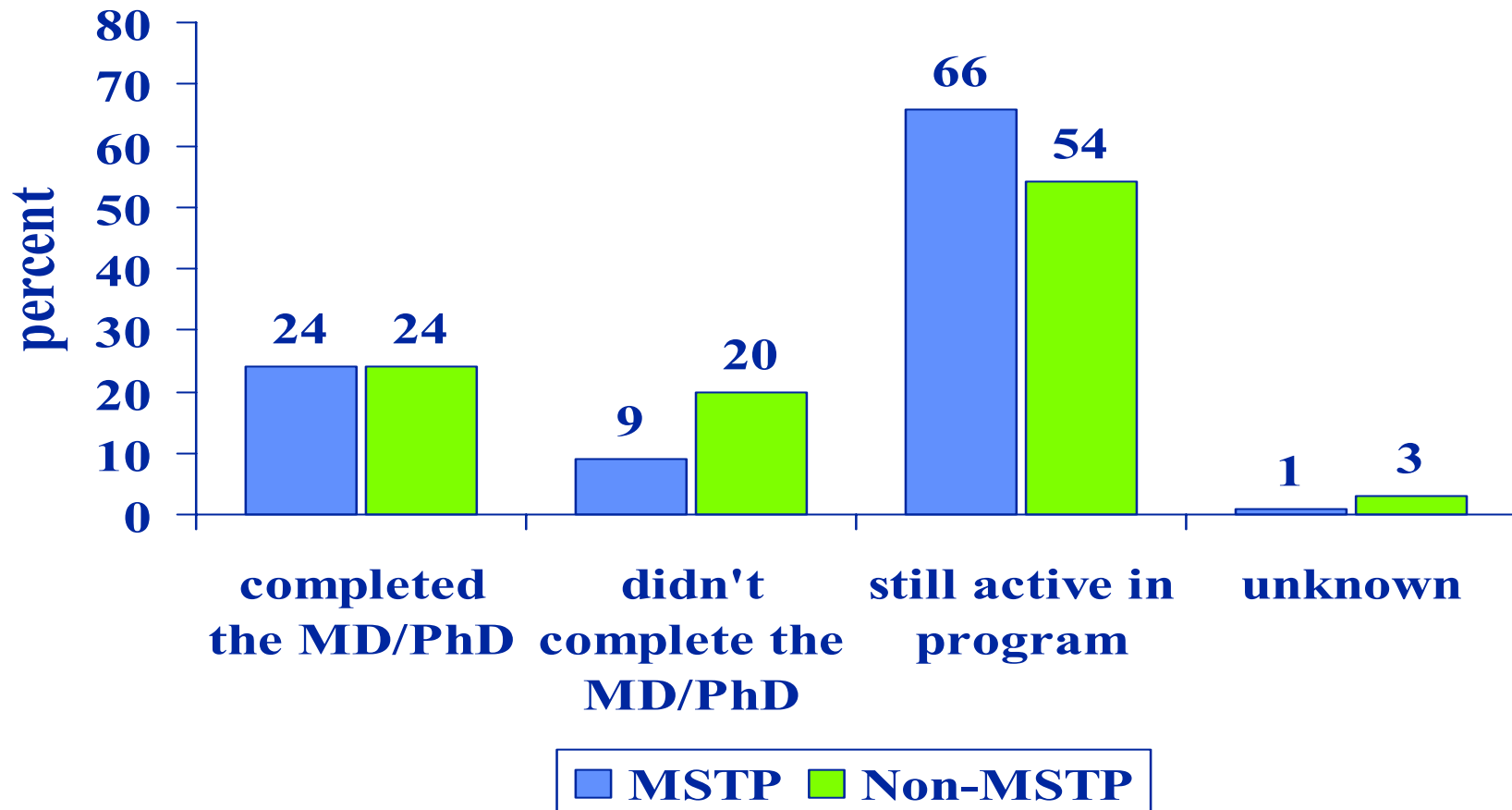
11. Reasons for Not Completing the MD/PhD (Part 2)

1980-90 Matriculating Cohorts



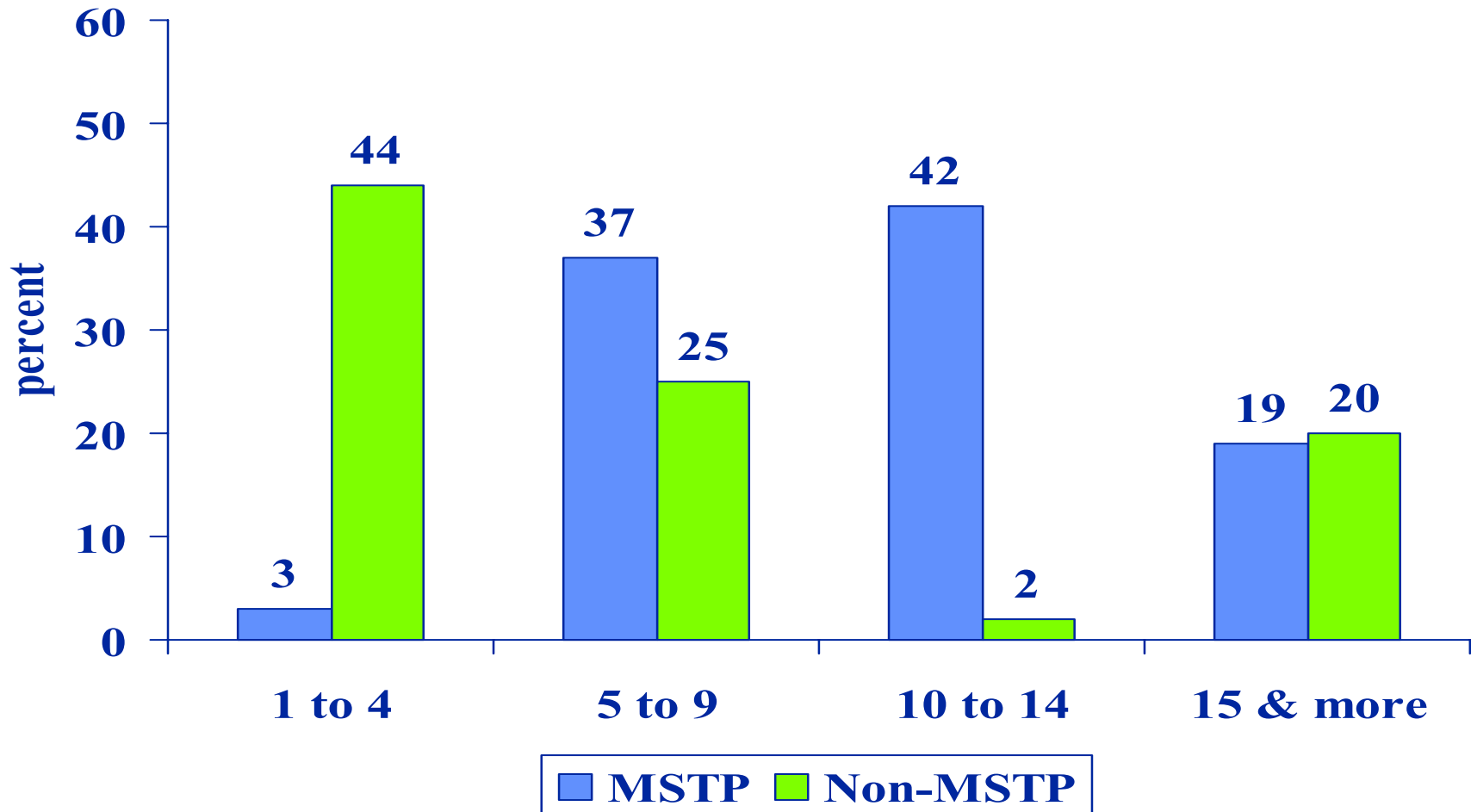


12. Status of MD/PhD Students 1991-99 Matriculating Cohorts





13. Distribution of MD/PhD Students by Program Size in 1999 1991-99 Matriculating Cohorts





Note

- MSTP participants are students who received MSTP support as identified by their MD/PhD programs.
- Difference in mean value of MCAT between MSTP participants and non-MSTP students is statistically significant at $P < 0.05$ level for 1980 and at $P < 0.001$ level for all other years.
- Difference in mean value of GPA between MSTP participants and non-MSTP students is statistically significant at $P < 0.05$ level for all years, except 1982, 1983, 1985, and 1998.