

Lessons from the Past, Policies for the Future: Medical School Expansion of the 1960-1970s

Candice Chen, MD MPH
The George Washington University
School of Public Health and Health Services

AAMC 2009 Physician Workforce Research Conference
April 30, 2009

MEDICAL EDUCATION FUTURES STUDY

EXAMINING MEDICAL EDUCATION'S ROLE IN REDUCING DISPARITIES, INCREASING ACCESS AND IMPROVING HEALTH IN AN ERA OF HEALTH CARE REFORM



THE GEORGE WASHINGTON UNIVERSITY
SCHOOL OF PUBLIC HEALTH
AND HEALTH SERVICES

SUPPORT PROVIDED BY THE JOSIAH MACY JR. FOUNDATION

Co-Investigators

Fitzhugh Mullan, MD

Murdock Head Professor of Medicine & Health Policy
The George Washington University

Gretchen Kolsky, MPH CHES

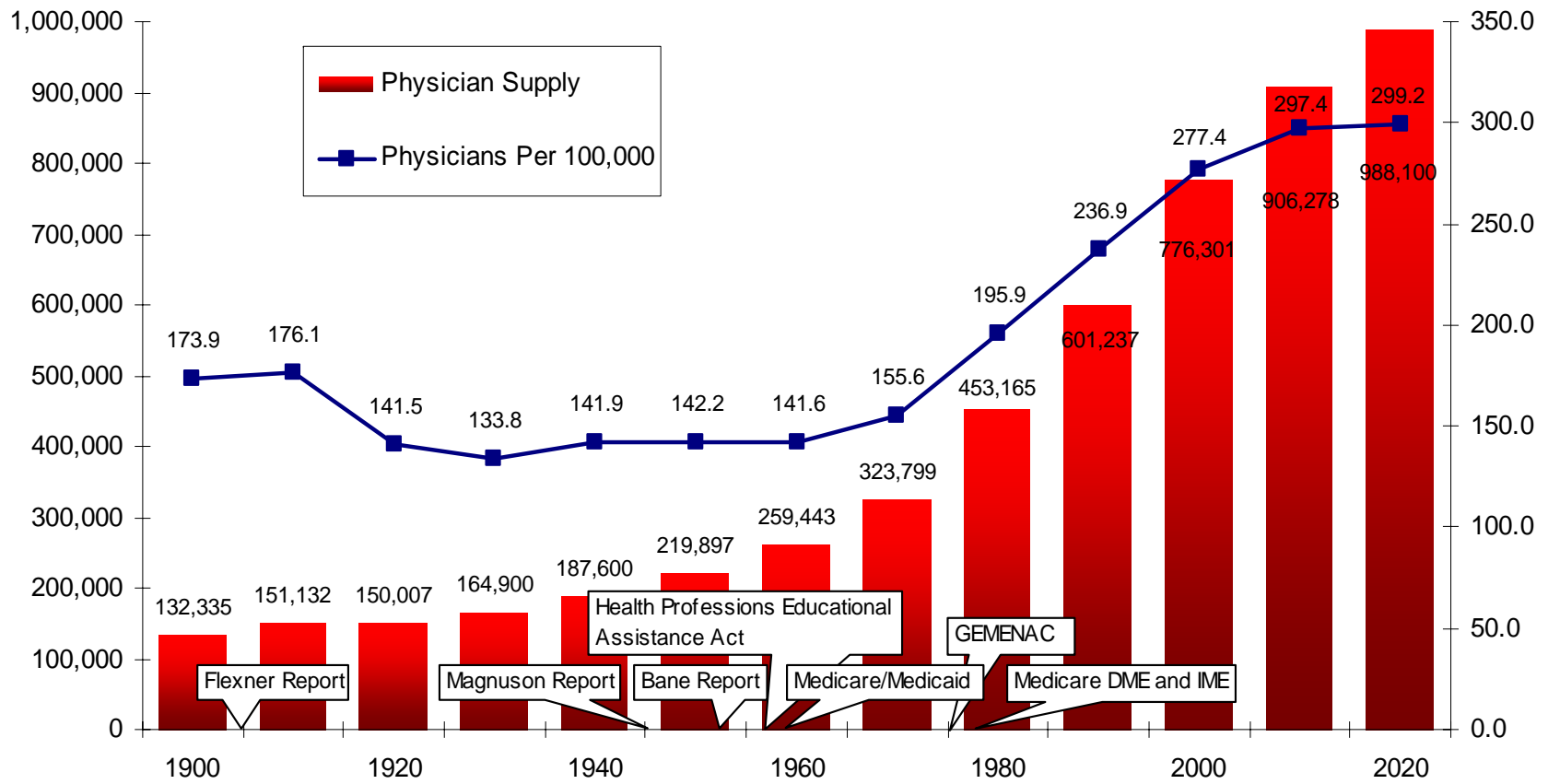
Senior Research Associate in the Department of Health Policy
The George Washington University

* The Medical Education Futures Study is funded by the Josiah Macy, Jr. Foundation.

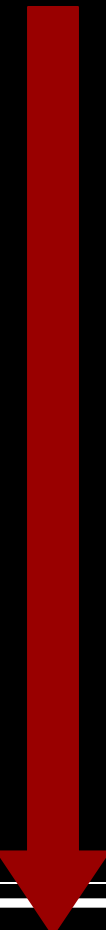
Objectives

- Review policies and outcomes from the last major medical school expansion
- Explore implications for the current and future medical school expansion

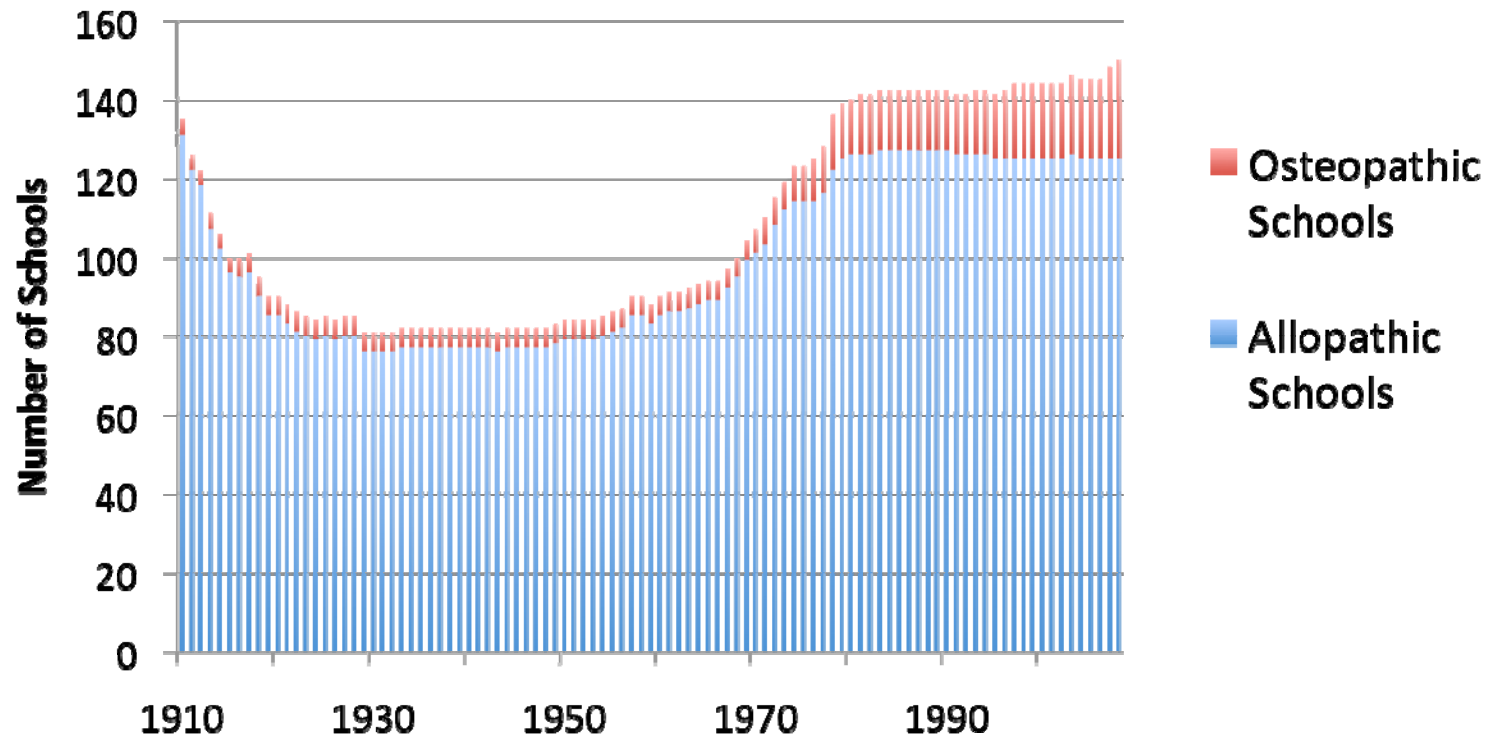
Physician Supply 1900 Projected to 2020



Health Professions Educational Assistance Act

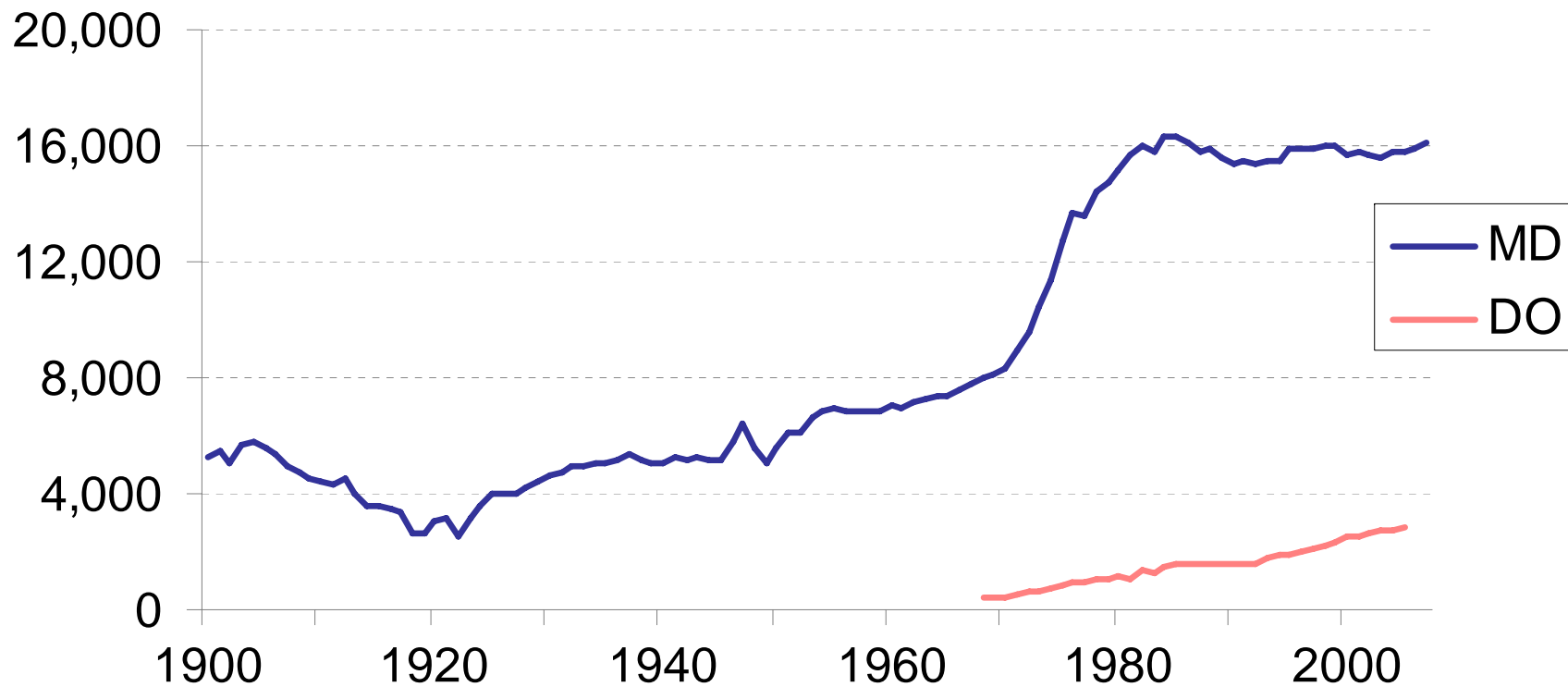
- 
- 1963 → Construction grants and student loan grants
 - 1965 → Added basic improvement grants and scholarships for students from low income families
 - 1968 → Added grants for curriculum improvement, education research, training for new types of health professionals
 - 1971 → Grants expanded to address geographic distribution, increase enrollment of minority and low income students, support training in primary care
 - 1976 → Declared “no longer an insufficient number of physicians and surgeons in the United States”

US Medical Schools



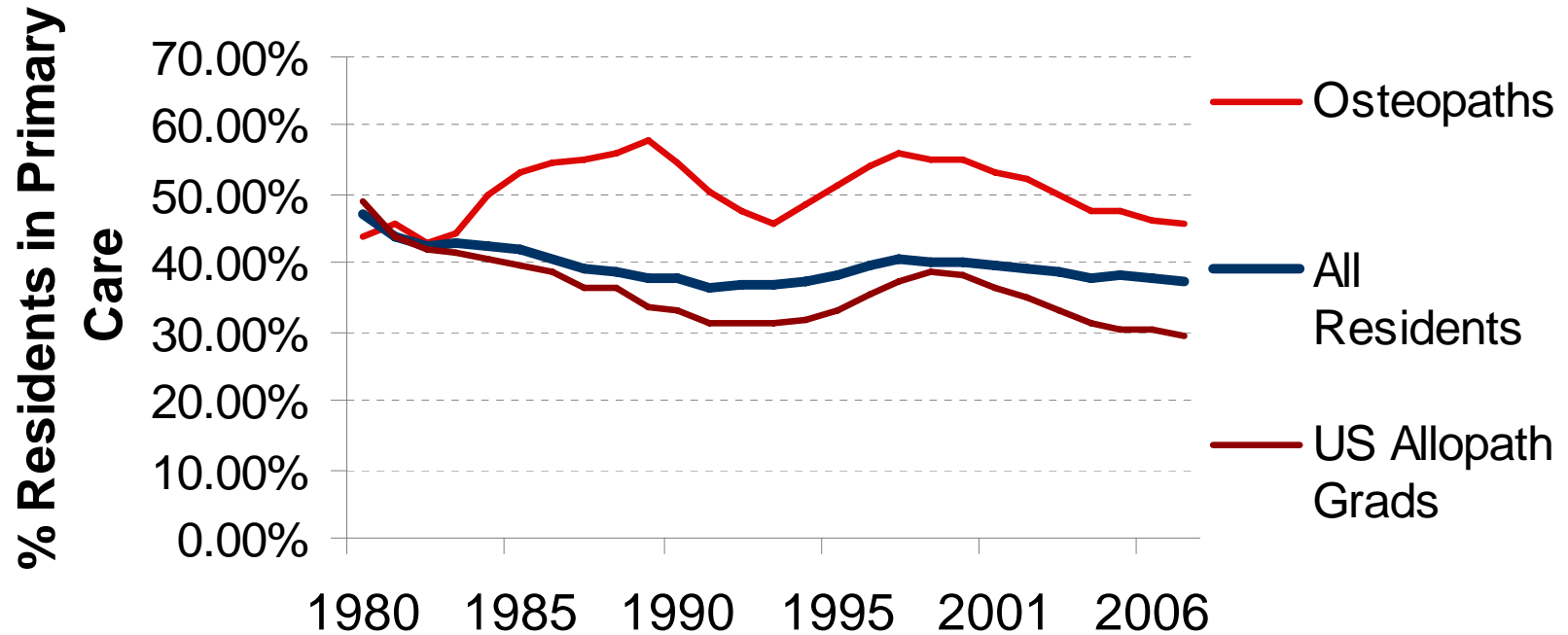
Source: AAMC Data Book 2007 (1929-2007). Schofield, 1984 (1900-1928), AACOM Annual Statistical Report on Osteopathic Medical Education, 2006

Medical Graduates Per Year



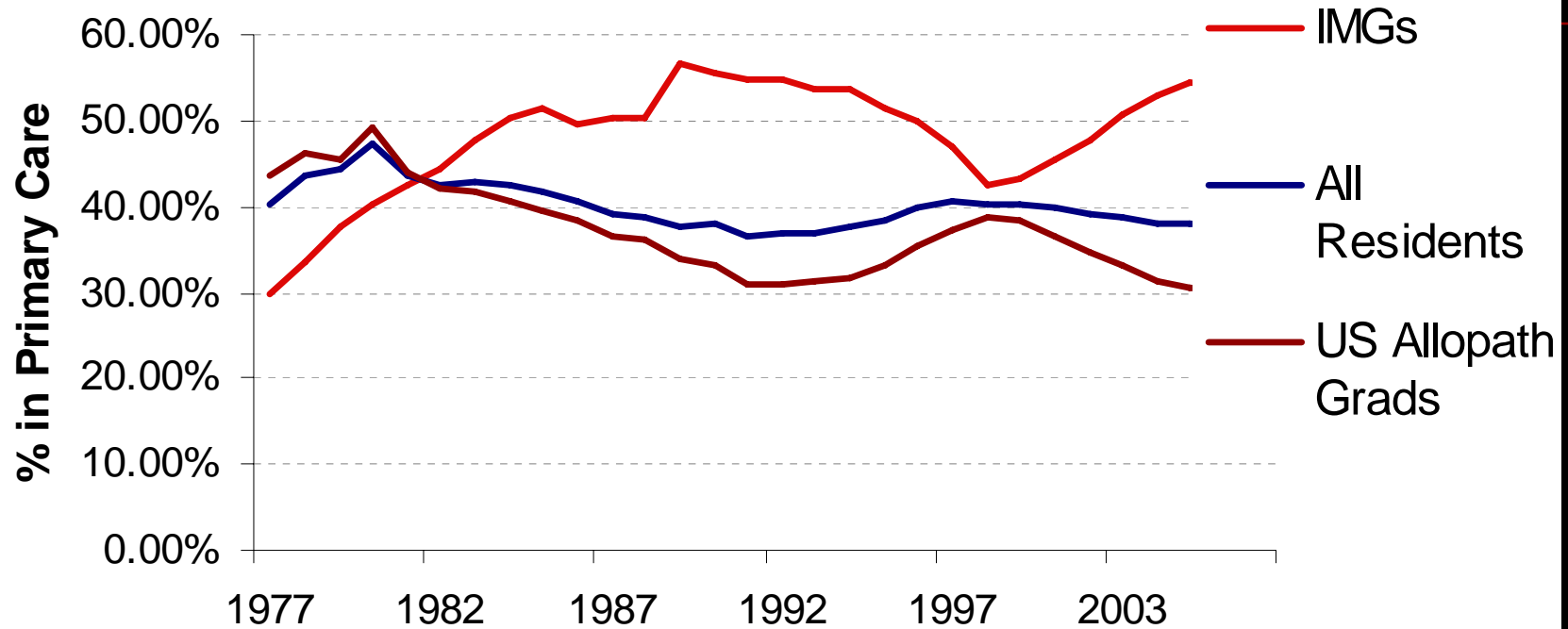
Source: AAMC Data Book 2007 (M.D. Grads 1929-2007), Schofield, 1984 (M.D. Grads 1900-1928), AACOM Annual Statistical Report (D.O. Grads 1968-2005)

Residents in Primary Care



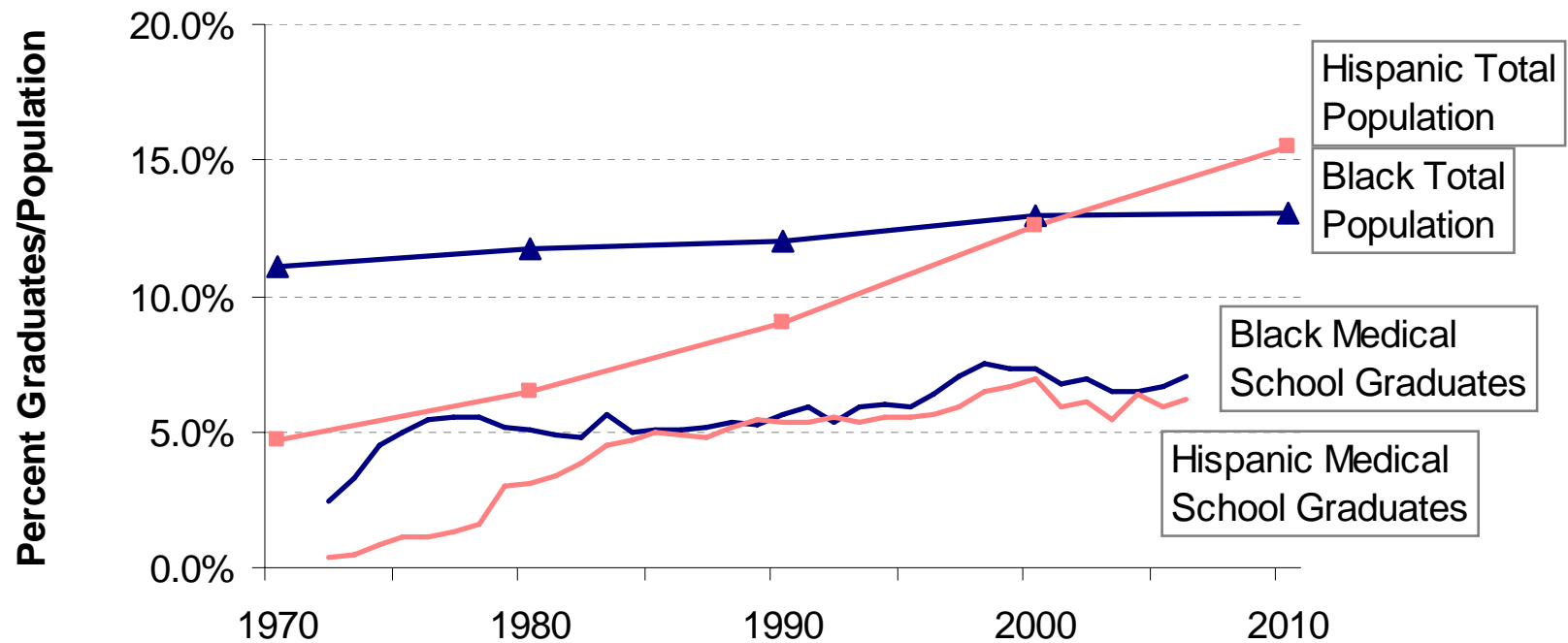
Source: JAMA Annual Graduate Medical Education data, September 1980-2007

Residents in Primary Care



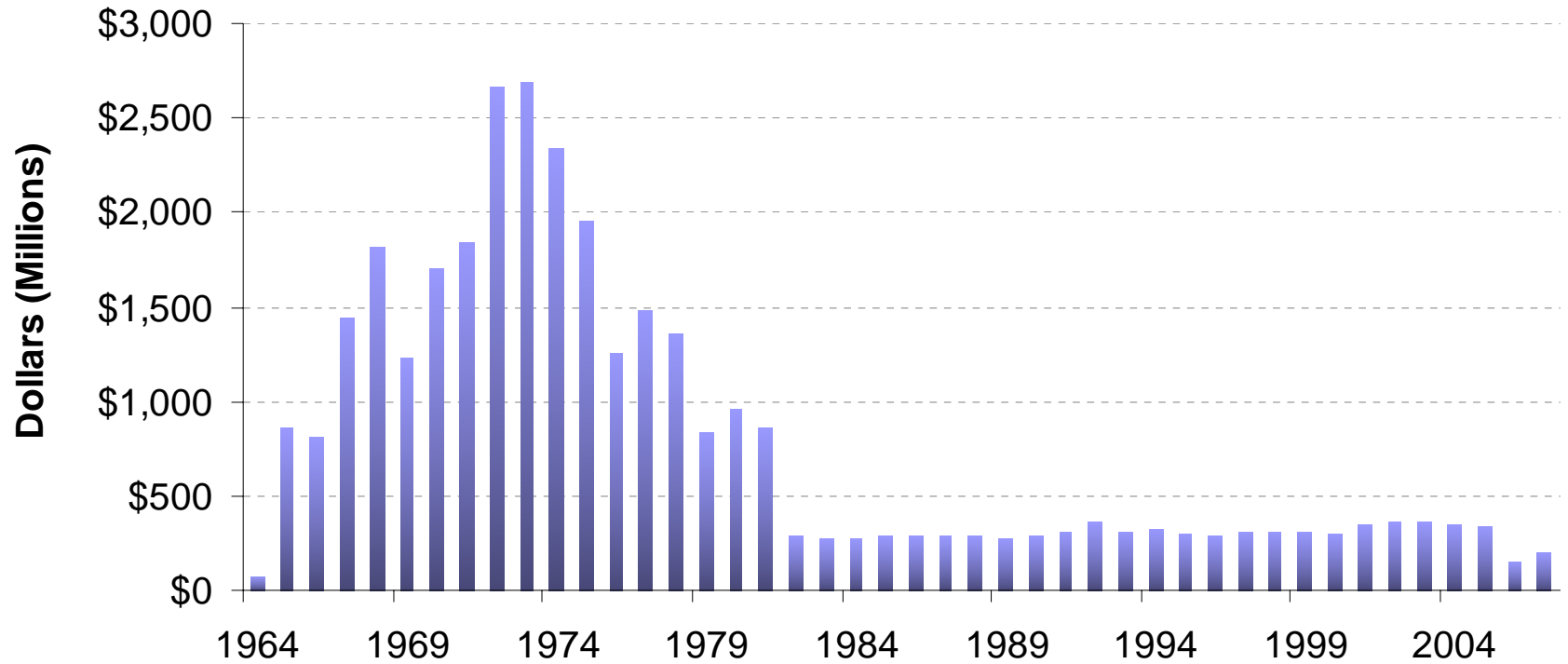
Source: JAMA Annual Graduate Medical Education data, September 1980-2007

Minority Medical School Graduates Compared to U.S. Population



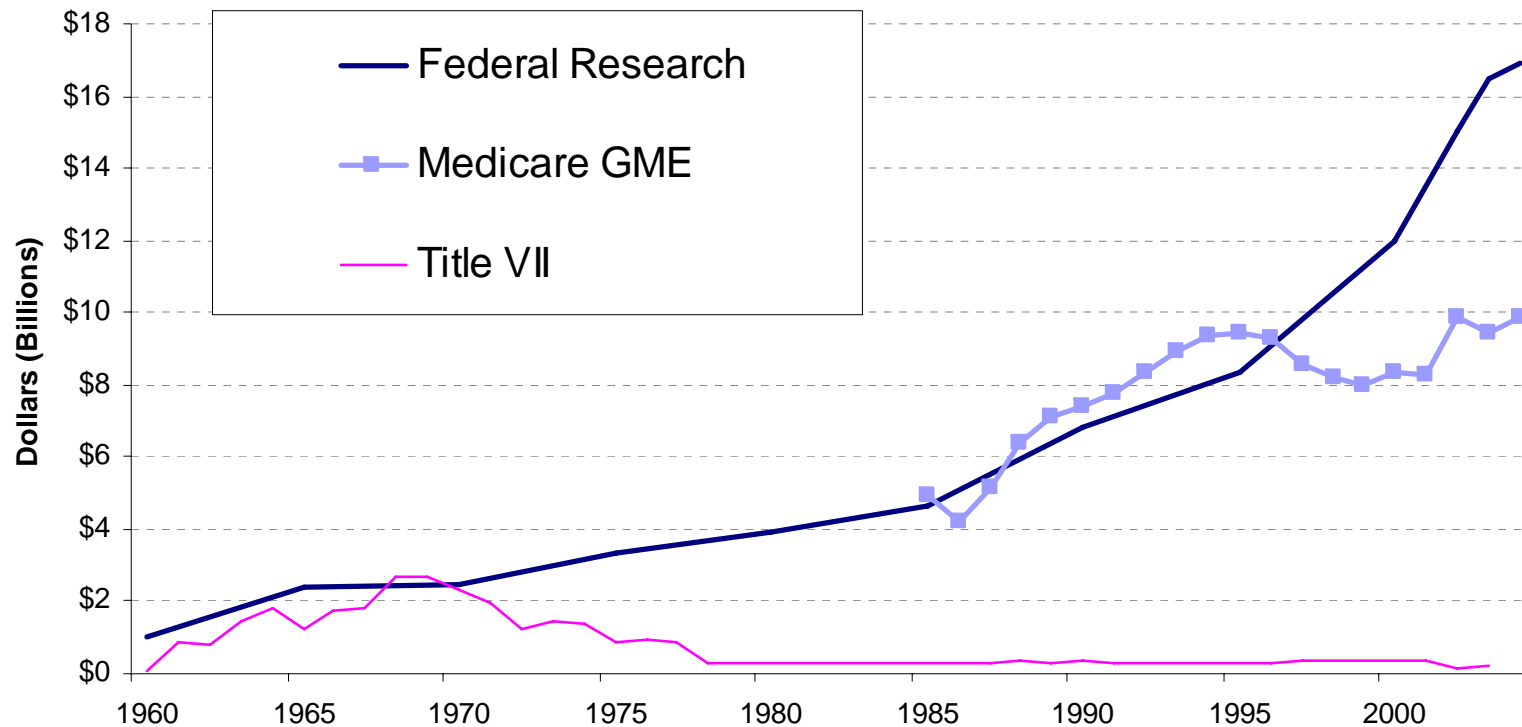
Source: Medical School Graduate Data: AAMC Data Book, 2007; Population Data: US Census Bureau

Title VII Funding, 2008 Dollars



Source: Data provided by the Health Resource and Services Administration

U.S. Medical School Revenue, 2008 Dollars



Source: Title VII: Data provided by HRSA; Medicare GME: Data provided by CMS; Federal Research: AAMC Data Book, April 2007

Conclusions

1. Good policy requires good leadership
2. Expansion is easier than social mission
3. More sticks are needed to go with the carrots
4. Osteopathy and the Flexnerian bind
5. Workforce intelligence

Questions?

Contact Information

Candice Chen, MD MPH

The George Washington University
School of Public Health and Health Services

(202) 994-4338

Candice.chen@gwumc.edu

www.medicaleducationfutures.org

MEDICAL EDUCATION FUTURES STUDY

EXAMINING MEDICAL EDUCATION'S ROLE IN REDUCING DISPARITIES, INCREASING
ACCESS AND IMPROVING HEALTH IN AN ERA OF HEALTH CARE REFORM



THE GEORGE WASHINGTON UNIVERSITY
SCHOOL OF PUBLIC HEALTH
AND HEALTH SERVICES

SUPPORT PROVIDED BY THE JOSIAH MACY JR. FOUNDATION