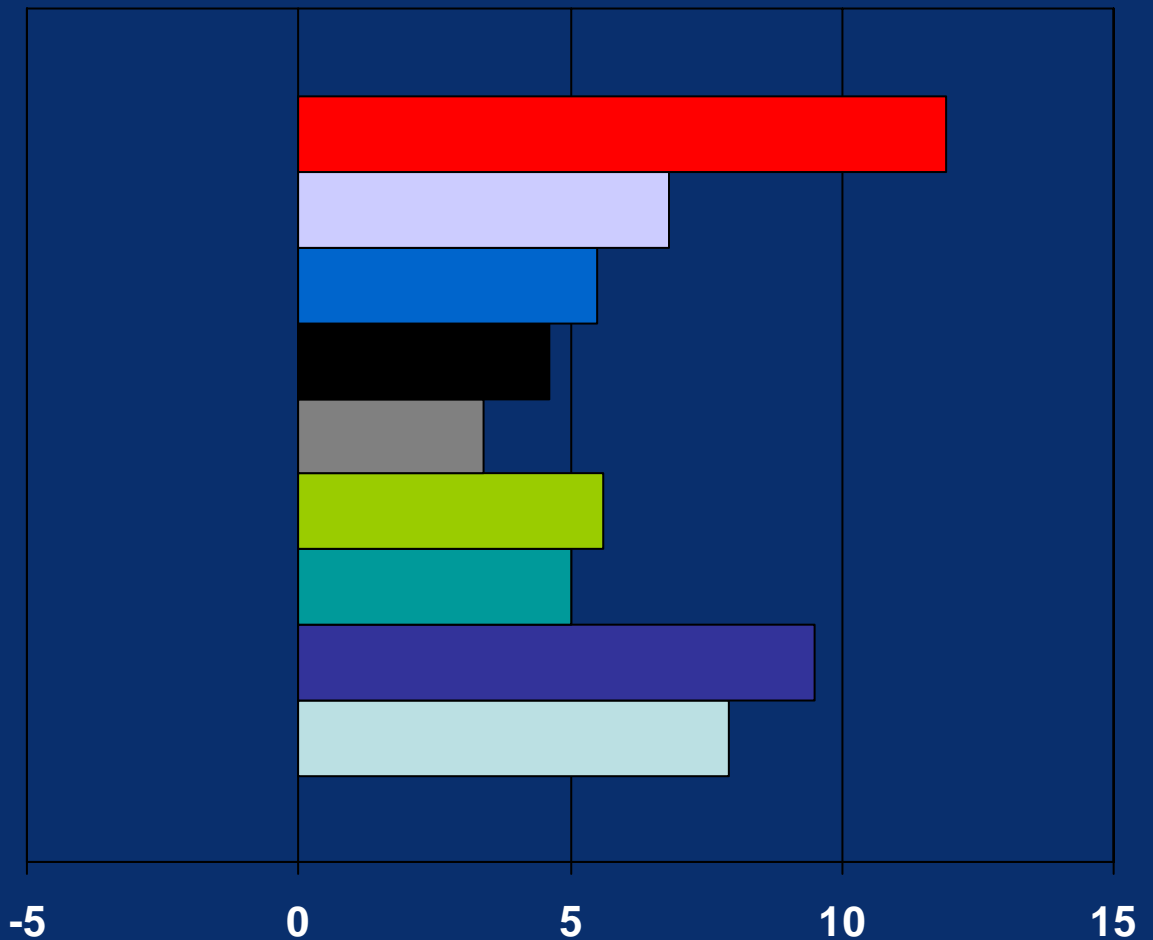


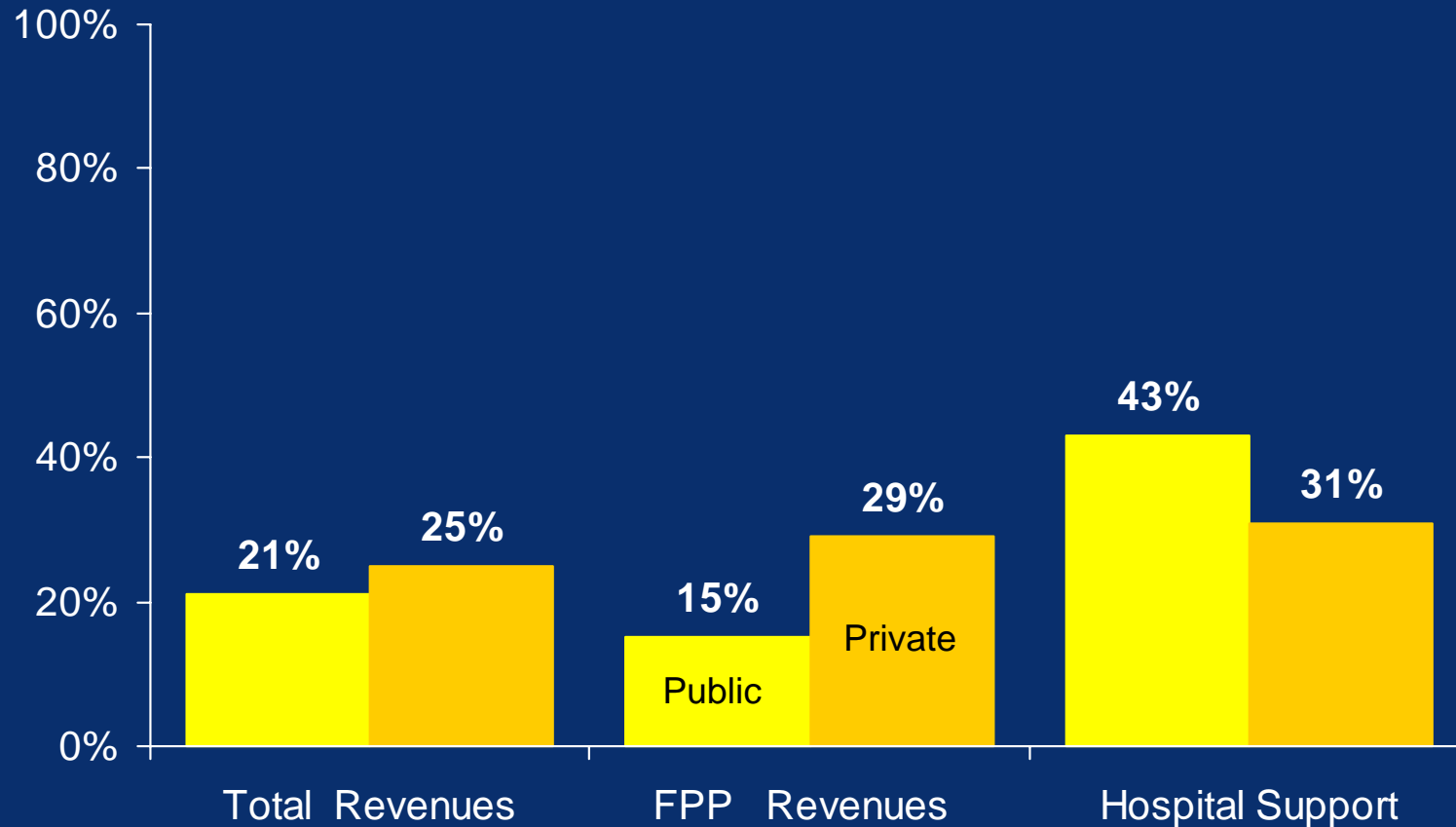
Figure 7: Percent Change in Revenue by Sources All Schools, FY04 to FY05

- Practice Plans
- Hospitals/Medical School Programs
- Federal Grants and Contracts
- Non-Federal Grants and Contracts
- State, Local, and Parent Support
- Gifts & Endowment (includes restricted and unrestricted funds)
- Tuition and Fees
- Miscellaneous Sources
- Total Revenues



Source: LCME Part I-A Annual Financial Questionnaire

Figure 8: Percent Schools Reporting Revenue Decrease FY04 vs. FY05, Constant Dollars



Source: LCME Part I-A Annual Financial Questionnaire